

HMGB-1

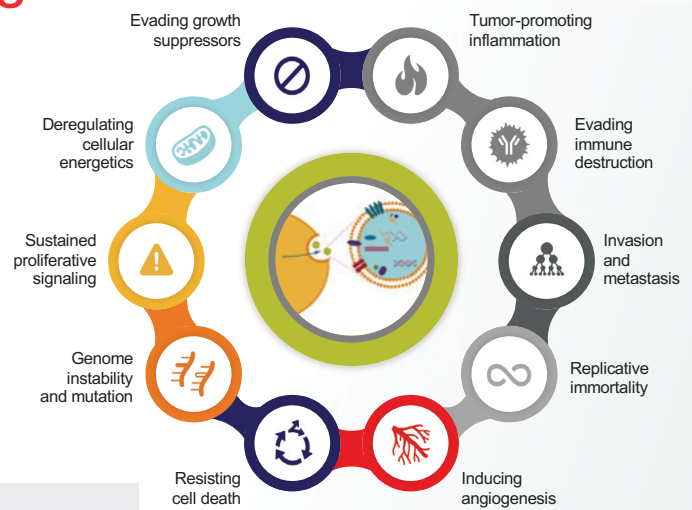
CA125

Hallmarks of cancer: new ProcartaPlex immunoassay panels for screening

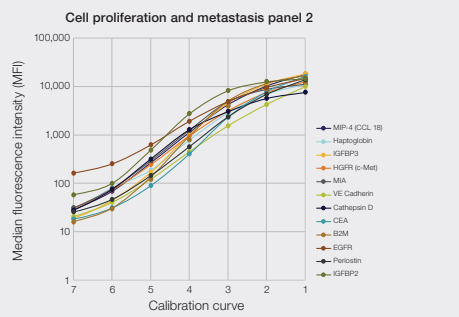
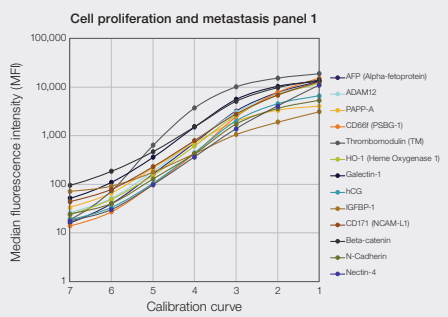
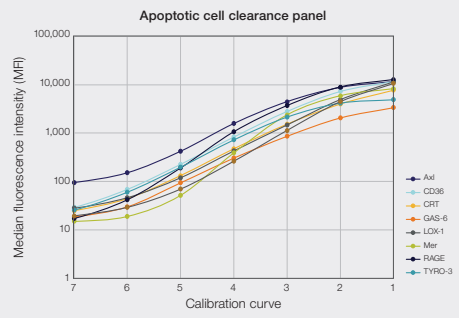
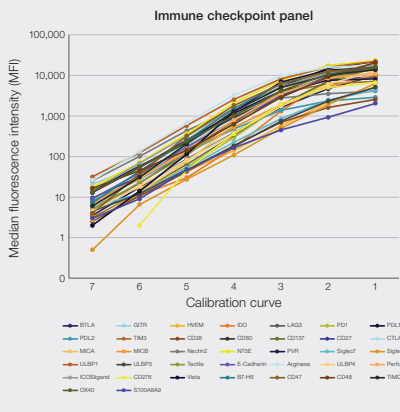
Uncovering the complexities of cancer

Discover a complete collection of Invitrogen™ ProcartaPlex™ panels to address the hallmarks of cancer from [cell proliferation and metastasis](#), [resisting cell death](#), [evading immune destruction](#), and even [exosome characterization](#). This expanded menu for detection of protein markers now offers the largest selection and flexibility to customize panels of choice for extensive interrogation of cancer biology.

These new panels can also be combined with existing markers involved in immuno-oncology, angiogenesis, and apoptosis, providing unique solutions for biomarker profiling in cancer research.



Hallmarks of cancer: Biological processes established during the development of human tumors.



ProcartaPlex multiplex protein assays. Multiplex up to 65 protein targets from complex biological samples, with flexible options from preconfigured solutions to custom mixed panels.

Figure 1. Standard curve examples from some of the ProcartaPlex panels demonstrating the high-level multiplex screening in one run of the assay to save time, sample, and labor.

Ordering information

ProcartaPlex panel	Analytes	Cat. No.
Angiogenesis 18-Plex Human ProcartaPlex Panel	Angiopoietin-1, BMP-9, CD31 (PECAM-1), EGF, EMMPRIN, follistatin, FGF-2, G-CSF (CSF-3), HB-EGF, HGF, IL-8 (CXCL8), leptin, LYVE-1, PDGF-BB, syndecan, TIE-2, VEGF-A, VEGF-D	EPX180-15806-901
Angiogenesis 3-Plex Human ProcartaPlex Panel 2	Angiogenin, angiostatin, endostatin	EPX030-15807-901
Apoptosis 6-Plex Human ProcartaPlex Panel	Bcl-2, caspase-3 (active), cleaved PARP, cytochrome C, GAPDH, p53	EPX06A-15823-901
Apoptotic Cell Clearance 12-Plex Human ProcartaPlex Panel	AXL, CD36, CALR (CRT), Gas6, LOX-1, MBL, Mer (MERTK), CD31 (PECAM-1), PAI-1 (Serpin), uPAR, RAGE, TYRO3	EPX120-15816-901
Cell Death 4-Plex Human ProcartaPlex Panel	HSP70, HSP90, Dkk-1, HMGB1 (HMG-1)	EPX040-15843-901
Cell Proliferation and Metastasis 13-Plex Human ProcartaPlex Panel 1	AFP (Alpha-fetoprotein), ADAM12, PAPP-A, CD66f (PSBG-1), thrombomodulin (TM), HO-1 (heme oxygenase 1), galectin-1, hCG, IGFBP-1, CD171 (NCAM-L1), beta-catenin, N-cadherin, nectin-4	EPX130-15841-901
Cell Proliferation and Metastasis 12-Plex Human ProcartaPlex Panel 2	MIP-4 (CCL18), haptoglobin, IGFBP-3, HGFR (c-Met), MIA, VE-cadherin, cathepsin D, CEA (CEACAM-5), periostin (OSF-2), beta-2-microglobulin (B2M), IGFBP-2, EGFR (ErbB1)	EPX120-15842-901
Cell Proliferation 8-Plex Human ProcartaPlex Panel	IGF-2, midkine (MK), SPARC (osteonectin), TrkB, HSP27, glypican-1 (GPC1), EpCAM, HSP60	EPX080-15844-901
Exosome Characterization 6-Plex Human ProcartaPlex Panel	CD81, CD63, CD9, syntenin-1, VLA-4, cytochrome c	EPX060-15845-901
Growth Factor 11-Plex Human ProcartaPlex Panel	BDNF, EGF, FGF-2, HGF, LIF, NGF beta, PDGF-BB, PIGF-1, SCF, VEGF-A, VEGF-D	EPX110-12170-901
Immune Checkpoint 37-Plex Human ProcartaPlex Panel	Arginase-1, B7-H6, BTLA, CD134 (OX40), CD137 (4-1BB), CD152 (CTLA4), CD27, CD276 (B7-H3), CD28, CD47 (IAP), CD48 (BLAST-1), CD73 (NT5E), CD80, CD96 (Tactile), E-cadherin, GITR, HVEM, ICOS ligand (B7-H2), IDO, LAG-3, MICA, MICB, nectin-2, PD-1, PD-L1, PD-L2, perforin, PVR, S100A8/A9, siglec-7, siglec-9, TIM-3, TIMD-4, ULBP-1, ULBP-3, ULBP-4, VISTA (B7-H5)	EPX370-15846-901

See the comprehensive list of target selections and design your own Invitrogen™ ProcartaPlex™ oncology panel with the [ProcartaPlex Panel Configurator](#). You can select 96-well or 384-well formats.

Need an instrument?

Check out the new [Invitrogen™ Luminex™ xMAP™ INTELLIFLEX DR-SE System](#) with convenient features like touchscreen, barcoding, and easy automation for high-throughput needs.



Learn more at thermofisher.com/procartaplex

invitrogen