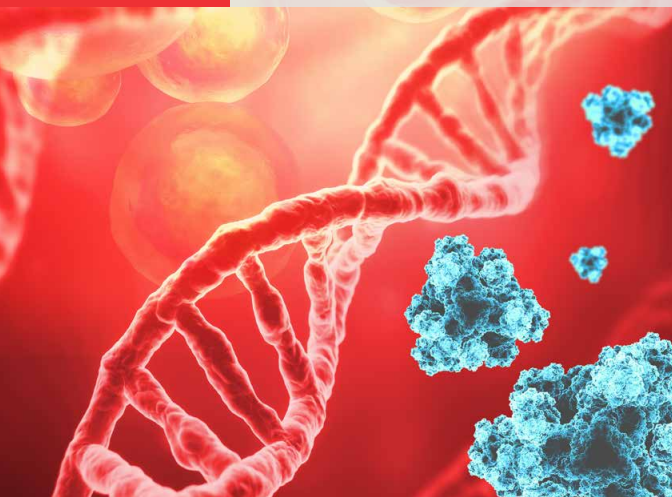


sample prep

thermo
scientific

applied
biosystems

invitrogen



MagMAX kit and KingFisher instrument selection guide



ThermoFisher
SCIENTIFIC



Total RNA*



Blood

Applied Biosystems™ MagMAX™ for Stabilized Blood RNA isolation kit, Tempus™ tubes (Cat. No. 4451893)

Applied Biosystems™ MagMAX™ for Stabilized Blood RNA isolation kit, Paxgene™ tubes (Cat. No. 4451894)

Applied Biosystems™ MagMAX™ *mirVana*™ Total RNA Isolation Kit (Cat. No. A27828)



Plant tissue

Applied Biosystems™ MagMAX™ Plant RNA Isolation Kit (Cat. No. A33784)



Tissue (non-plant)

MagMAX *mirVana* Total RNA Isolation Kit (Cat. No. A27828)



Cell culture

* Excludes small RNA.

ThermoFisher
SCIENTIFIC



True total RNA

(micro and large)



FFPE*
tissue

Applied Biosystems™ MagMAX™
FFPE DNA/RNA Ultra Kit
(Cat. No. A31881)



Plasma
or
serum

Applied Biosystems™ MagMAX™
Cell-Free Total Nucleic Acid
Isolation Kit (Cat. No. A36716)



Blood



Tissue
(non-plant)

MagMAX *mirVana* Total RNA
Isolation Kit (Cat. No. A27828)



Cell
culture

* FFPE = formalin-fixed paraffin-embedded

Kit guide for Thermo Scientific™ KingFisher™
systems [thermofisher.com/kingfisherkits](https://www.thermofisher.com/kingfisherkits)



mRNA

(polyadenylated selected)



Clean
up

Invitrogen™ Dynabeads™ mRNA
Purification Kit (Cat. No. 61006)



Blood

Invitrogen™ Dynabeads™
mRNA DIRECT™ Purification Kit
(Cat. No. 61011)



Plasma
or
serum

Invitrogen™ Dynabeads™ mRNA
DIRECT™ Micro Purification Kit
(Cat. No. 61021)



Tissue
(non-plant)



Cell
culture



Plant
tissue

Kit guide for KingFisher systems

[thermofisher.com/kingfisherkits](https://www.thermofisher.com/kingfisherkits)

DNA



Plasma
or
serum

Applied Biosystems™ MagMAX™
Cell-Free DNA Isolation Kit
(Cat. No. A29319)



FFPE

MagMAX FFPE DNA/RNA Ultra Kit
(Cat. No. A31881)



Plant
tissue

Applied Biosystems™ MagMAX™
Plant DNA Isolation Kit (Cat. No. A32549)



Feces

Applied Biosystems™ MagMAX™
Microbiome Ultra Nucleic Acid
Isolation Kits (Cat. Nos. A42357, A42358)



Saliva

Applied Biosystems™ MagMAX™
Saliva gDNA Isolation Kit
(Cat. No. A39059)



Blood

Applied Biosystems™ MagMAX™ DNA
Multi-Sample Ultra 2.0 Kit
(Cat. No. A36570)



Tissue
(non-plant)

Thermo Scientific™ KingFisher™
Ready DNA Ultra 2.0 Prefilled Plates
(Cat. No. A36586)



Cell
culture

Thermo Scientific™ KingFisher™
Duo-Ready DNA Ultra 2.0 Prefilled
Plates (Cat. No. A36584)



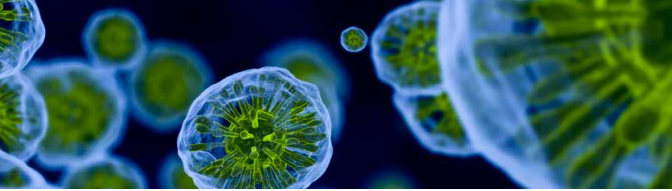
Buccal
swab



Other
swabs

Kit guide for KingFisher systems

[thermofisher.com/kingfisherkits](https://www.thermofisher.com/kingfisherkits)



Viral, fungal, and bacterial RNA/DNA



Blood

Applied Biosystems™ MagMAX™ Pathogen RNA/DNA Kit

(Cat. No. 4462359)



Plasma or serum

Applied Biosystems™ MagMAX™ Viral/Pathogen Ultra Nucleic Acid Isolation Kit

(Cat. No. A42356)



Cell culture

Applied Biosystems™ MagMAX™ Viral/Pathogen Nucleic Acid Isolation Kit

(Cat. No. A42352)



Saliva

Applied Biosystems™ MagMAX™ Viral/Pathogen II Nucleic Acid Isolation Kit (Cat. No. A48383R)



Buccal swab

Invitrogen™ Dynabeads™ Intact Virus Enrichment (optimized for SARS-CoV-2)

(Cat. Nos. 10700D and 10701D)



Other swabs

Invitrogen™ Intact Virus Precipitation Reagent (optimized for SARS-CoV-2)

(Cat. No. 10720D)



Feces

Kit guide for KingFisher systems

[thermofisher.com/kingfisherkits](https://www.thermofisher.com/kingfisherkits)

Total nucleic acid



Plasma or serum

MagMAX Cell-Free Total Nucleic Acid Isolation Kit (Cat. No. A36716)



Urine

MagMAX Cell-Free Total Nucleic Acid Isolation Kit (Cat. No. A36716)

MagMAX Microbiome Ultra Nucleic Acid Isolation Kits (Cat. Nos. A42357, A42358)



Feces



Saliva



Viral transport media (VTM)

MagMAX Microbiome Ultra Nucleic Acid Isolation Kits (Cat. Nos. A42357, A42358)



Fungi



Soil



Wastewater (sludge and sewage)

Applied Biosystems™ MagMAX™ Wastewater Ultra Nucleic Acid Isolation Kits (Cat. Nos. A52606, A52610)

Kit guide for KingFisher systems

[thermofisher.com/kingfisherkits](https://www.thermofisher.com/kingfisherkits)



Cell isolation

Positive cell isolation

Invitrogen™ Dynabeads™ FlowComp™
Human CD3 Kit (Cat. No. 11365D)

Invitrogen™ Dynabeads™ FlowComp™
Human CD4 Kit (Cat. No. 11361D)

Invitrogen™ Dynabeads™ FlowComp™
Human CD8 Kit (Cat. No. 11362D)

Invitrogen™ Dynabeads™ FlowComp™
Human CD14 Kit (Cat. No. 11367D)

Invitrogen™ Dynabeads™ FlowComp™
Mouse CD4 Kit (Cat. No. 11461D)

Invitrogen™ Dynabeads™ FlowComp™
Mouse CD8 Kit (Cat. No. 11462D)

Negative cell isolation

Invitrogen™ Dynabeads™ Untouched™
Human CD8 T Cells Kit
(Cat. No. 11348D)

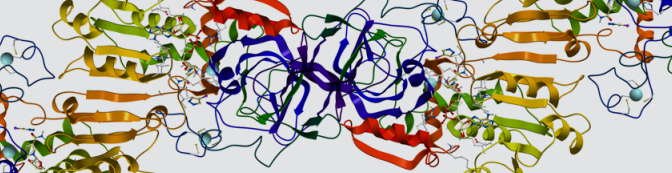
Depletion with Dynabeads products

Invitrogen™ Dynabeads™ CD14
(Cat. No. 11149D)

Invitrogen™ Dynabeads™ CD19 Pan B
(Cat. No. 11143D)

Kit guide for KingFisher systems

thermofisher.com/kingfisherkits



Protein isolation immunoprecipitation

Magnetic beads
coated with
Protein A or G

Invitrogen™ Dynabeads™ Protein A for
Immunoprecipitation (Cat. No. 10002D)

Invitrogen™ Dynabeads™ Protein A
Immunoprecipitation Kit (Cat. No. 10006D)

Invitrogen™ Dynabeads™ Protein G for
Immunoprecipitation (Cat. No. 10004D)

Invitrogen™ Dynabeads™ Protein G
Immunoprecipitation Kit (Cat. No. 10007D)

Thermo Scientific™ Pierce™ Protein A/G
Magnetic Beads (Cat. No. 88803)

Invitrogen™ Dynabeads™ His-Tag
Isolation and Pulldown (Cat. No. 10104D)

Magnetic beads
coated with
secondary
antibodies

Invitrogen™ Dynabeads™ M-280
Sheep Anti-Mouse IgG (Cat. No. 11202D)

Invitrogen™ Dynabeads™ M-280
Sheep Anti-Rabbit IgG (Cat. No. 11204D)

Magnetic beads
coated with
streptavidin

Invitrogen™ Dynabeads™ M-280
Streptavidin (Cat. No. 11206D)

Thermo Scientific™ Pierce™
Streptavidin Magnetic Beads
(Cat. No. 88816)

Kit guide for KingFisher systems

thermofisher.com/kingfisherkits



KingFisher instruments



Apex*

Thermo Scientific™ KingFisher™ Apex Purification System with 96 PCR Head (Cat. No. 5400910)

Thermo Scientific™ KingFisher™ Apex Purification System with 96 Combi Head (Cat. No. 5400920)

Thermo Scientific™ KingFisher™ Apex Purification System with 96 Deep-Well Head (Cat. No. 5400930)

Thermo Scientific™ KingFisher™ Apex Purification System with 24 Combi Head (Cat. No. 5400940)



Flex*

Thermo Scientific™ KingFisher™ Flex Purification System with 96 PCR Head (Cat. No. 5400610)

Thermo Scientific™ KingFisher™ Flex Purification System with 96 KingFisher Head (Cat. No. 5400620)

Thermo Scientific™ KingFisher™ Flex Purification System with 24 Deep-Well Head (Cat. No. 5400640)

Thermo Scientific™ KingFisher™ Flex Purification System with 96 Deep-Well Head (Cat. No. 5400630)



Presto*

Thermo Scientific™ KingFisher™ Presto Purification System with 24 Deep-Well Head (Cat. No. 5400840)

Thermo Scientific™ KingFisher™ Presto Purification System with 96 Deep-Well Head (Cat. No. 5400830)



Duo Prime

Thermo Scientific™ KingFisher™ Duo Prime Purification System (Cat. No. 5400110)

* For laboratory use.

KingFisher instruments

thermofisher.com/kingfisher

Plastics for KingFisher instruments



Apex

96 or 24 samples per run

Thermo Scientific™ KingFisher™
96 combi tip comb
(Cat. No. 97002570)

Thermo Scientific™ KingFisher™
96 deep-well plate, barcoded
(Cat. No. 95040450B)

Thermo Scientific™ KingFisher™
96 deep-well plate, sterile,
barcoded (Cat. No. 95040460B)

Thermo Scientific™
KingFisher™ 96-tip comb for
deep-well magnet, barcoded
(Cat. No. 97002534B)

Thermo Scientific™ KingFisher™
96 deep-well tip comb and
plate, sterile, barcoded
(Cat. No. 97002820B)

Thermo Scientific™ Nunc™ 96
storage tubes (Cat. No. 374086)

Thermo Scientific™
KingFisher™ 96 PCR tip comb
(Cat. No. 97002560)

Thermo Scientific™ KingFisher™
96 microplate (200 µL),
barcoded (Cat. No. 97002540B)

Thermo Scientific™ KingFisher™
96-tip comb, barcoded
(Cat. No. 97002524B)

Thermo Scientific™ PCR plate,
96 deep-well, clear, clear wells
(Cat. No. AB2396)

Thermo Scientific™ PCR plate,
96 deep-well, semi-skirted,
low profile, clear wells
(Cat. No. AB2496)

Thermo Scientific™ KingFisher™
24 combi tip comb
(Cat. No. 97002580)

Thermo Scientific™ KingFisher™
24 deep-well plate, barcoded
(Cat. No. 95040470B)

Thermo Scientific™ KingFisher™
24 deep-well plate, sterile,
barcoded (Cat. No. 95040480B)

Thermo Scientific™ KingFisher™
24 deep-well tip comb and plate,
barcoded (Cat. No. 97002610B)

Thermo Scientific™ KingFisher™
24 deep-well tip comb and
plate, sterile, barcoded
(Cat. No. 97002620B)

Thermo Scientific™ Nunc™ 24
storage tubes (Cat. No. 364323)

KingFisher instruments

thermofisher.com/kingfisher

Plastics for KingFisher instruments



Flex

96 or 24 samples per run

Thermo Scientific™ KingFisher™
96-tip comb, 100/box
(Cat. No. 97002524)

Thermo Scientific™ KingFisher™
96-tip comb (for PCR magnets),
50/box (Cat. No. 97002514)

Thermo Scientific™ KingFisher™
96 deep-well plate, 50/box
(Cat. No. 95040450)

Thermo Scientific™ KingFisher™
96 deep-well plate, sterile,
50/box (Cat. No. 95040460)

Thermo Scientific™ KingFisher™
24 deep-well plate, 50/box
(Cat. No. 95040470)

Thermo Scientific™ KingFisher™
24 deep-well plate, sterile,
50/box (Cat. No. 95040480)

Thermo Scientific™ KingFisher™
96 microplate (200 μ L), 50/box
(Cat. No. 97002540)

Thermo Scientific™ PCR plate,
96-well, skirted
50/box (Cat. No. AB-1300)

Thermo Scientific™ Nunc™
96-well Cap Mat, 50/box
(Cat. No. 9503230)

Thermo Scientific™ Nunc™ 96-
well Cap Mat, sterile, 25/box
(Cat. No. 9503233)

Thermo Scientific™ KingFisher™
Deep-well 96-tip comb, 100/box
(Cat. No. 97002534)

Thermo Scientific™ KingFisher™
Deep-well 96-tip comb and
plate, sterile, 50 pcs of each
(Cat. No. 97002820)

Thermo Scientific™ KingFisher™
Deep-well 24-tip comb
and plate, 50 pcs of each
(Cat. No. 97002610)

Thermo Scientific™ KingFisher™
Deep-well 24-tip comb and
plate, sterile, 50 pcs of each
(Cat. No. 97002620)

KingFisher instruments

thermofisher.com/kingfisher

Plastics for KingFisher instruments



Presto

96 or 24 samples per run

Thermo Scientific™ KingFisher™
96 deep-well plate, 50/box
(Cat. No. 95040450)

Thermo Scientific™ KingFisher™
96 deep-well plate, sterile,
50/box (Cat. No. 95040460)

Thermo Scientific™ KingFisher™
24 deep-well plate, 50/box
(Cat. No. 95040470)

Thermo Scientific™ KingFisher™
24 deep-well plate, sterile,
50/box (Cat. No. 95040480)

Thermo Scientific™ KingFisher™
96 microplate (200 µL), 50/box
(Cat. No. 97002540)

Thermo Scientific™ SuperPlate™
PCR plate, 96-well, skirted,
25/box (Cat. No. AB-2800)

Thermo Scientific™ KingFisher™
Deep-well 96-tip comb, 100/box
(Cat. No. 97002534)

Thermo Scientific™ KingFisher™
Deep-well 96-tip comb and
plate, sterile, 50 pcs of each
(Cat. No. 97002820)

Thermo Scientific™
KingFisher™ Deep-well
24-tip comb and plate,
50 pcs of each (Cat. No. 97002610)

Thermo Scientific™ KingFisher™
Deep-well 24-tip comb and
plate, sterile, 50 pcs of each
(Cat. No. 97002620)



Duo Prime

6 or 12 samples per run

Thermo Scientific™ KingFisher™
96 deep-well plate, 50/box
(Cat. No. 95040450)

Thermo Scientific™ KingFisher™
96 deep-well plate, sterile,
50/box (Cat. No. 95040460)

Thermo Scientific™ KingFisher™
24 deep-well plate, 50/box
(Cat. No. 95040470)

Thermo Scientific™ KingFisher™
24 deep-well plate, sterile,
50/box (Cat. No. 95040480)

Thermo Scientific™ KingFisher™
Duo 12-tip comb, 50/box
(Cat. No. 97003500)

Thermo Scientific™ KingFisher™
Duo Prime 6-tip comb, 48/box,
and 24 deep-well plate, 12/box
(Cat. No. 97003510)

Thermo Scientific™ KingFisher™
Duo elution strip for 12-tip
format, 40/box (Cat. No. 97003520)

Thermo Scientific™ KingFisher™
Duo cap for elution strip, 40/box
(Cat. No. 97003540)

Thermo Scientific™ KingFisher™
Duo Combi pack (tips, combs,
plates, and elution strips for
96 samples, for 12-tip format)
(Cat. No. 97003530)



For Research Use Only. Not for use in diagnostic procedures.

© 2017–2022 Thermo Fisher Scientific Inc. All rights reserved. All trademarks are the property of Thermo Fisher Scientific and its subsidiaries unless otherwise specified. **COL117747 0322**