

Organelle markers

Unconjugated antibodies by target

Cell membrane markers

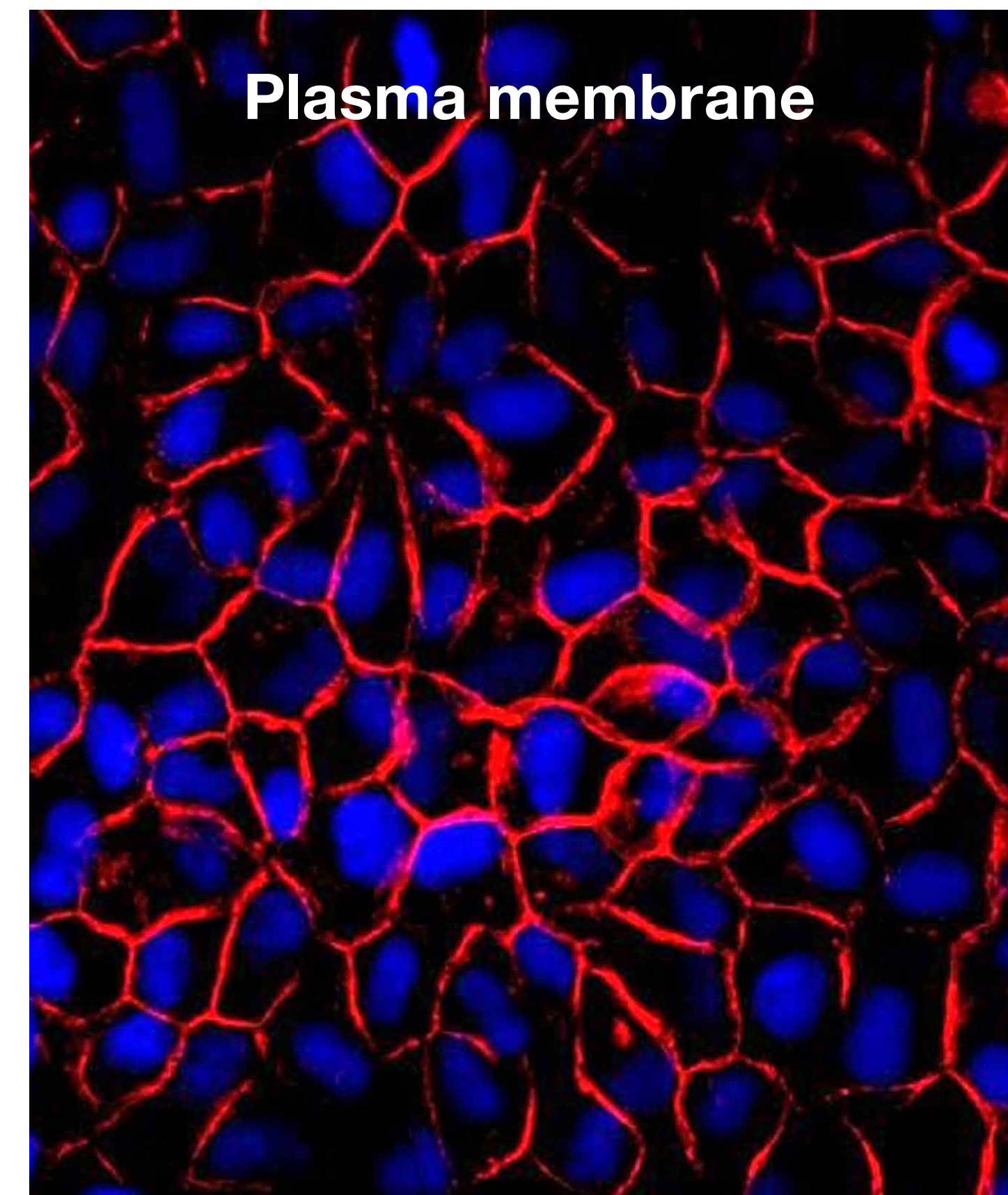
Cell structure/organelle	Target	Antibody Cat. No.
Plasma membrane	CD98	PA5-82611
Cell junction	Beta catenin	PA5-16762, PA5-77934
	E-cadherin	MA5-12547
	N-cadherin	PA5-19486, MA1-91128
	Pan-cadherin	71-7100
	VE-cadherin	PA5-19612, MA1-198
	ZO-1	PA5-19090, 14-9776-82, PA5-28858
Intercellular junction	ZO-2	PA5-17155
	ZO-3	701825
	Claudin 18	700178
Caveolae	Claudin 5	MA5-32614
	Caveolin 1	PA1-064
	Caveolin 2	PA1-065, MA5-32083
	Caveolin 3	PA1-066

Cytoplasmic markers

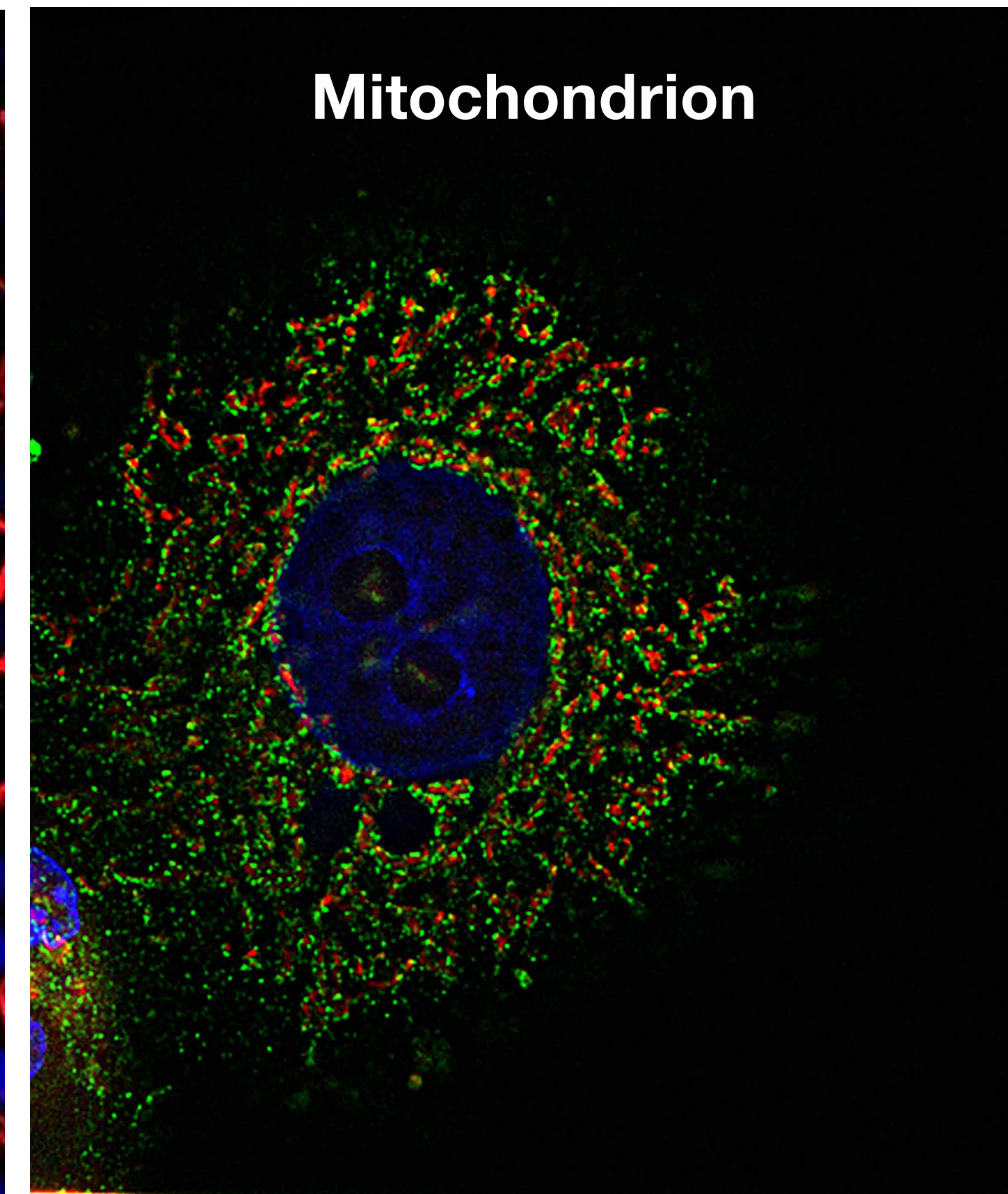
Cell structure/organelle	Target	Antibody Cat. No.
Cytoplasm	HIF1A	MA1-516, PA1-16627
	HSP70	MA3-007, MA3-006
	Ubiquitin	LF-MA0118
Cytoskeleton	Actin	MA5-32479
	Beta-3 tubulin	MA1-118, MA1-19187
Intermediate filament	Desmin	PA5-16705, PA5-19063
	Vimentin	MA5-11883
	GFAP	PA1-10004, PA1-10019, MA5-12023
	Cytokeratin 7	MA5-11986, MA1-06315
	Cytokeratin 8	MA1-06318, PA5-29607
	Cytokeratin 14	MA5-11599
Endoplasmic reticulum	Cytokeratin 19	MA5-15884, MA5-15463
	Cytokeratin Pan	MA5-12231
	Calnexin	PA5-34754, PA5-19169
Ribosome	Calreticulin	PA3-900, PA5-25922
	PDI	MA3-019, MA3-018
Golgi apparatus	RPS3	PA5-27974
	S6	MA5-15164
Mitochondrion	GM130	703794
	Golgin-97	PA5-30048
	TGN46	MA3-063
Endosome	Hexokinase 1	711777
	ATP5A1	PA5-26778, 459240
Lysosome	HSP60	PA5-34760
	EEA1	MA5-14794
	RAB5	PA5-29022
Autophagosome	LAMP1	MA5-32491, MA1-164
	LAMP2	MA1-205
	LC3A/LC3B	PA1-16931
	LC3B	PA1-46286
Peroxisome	LIMP2	703037
	ATG12	701684
Proteasome	ATG9A	PA1-16993
	Catalase	702955
Melanosome	FOXp3	PA1-16876
	PMP70	PA1-650
	PSMA3	703791
	PSMB3	PA5-28086
	PSMD7	PA1-1963
	TYRP1	PA5-81909

Cell membrane markers

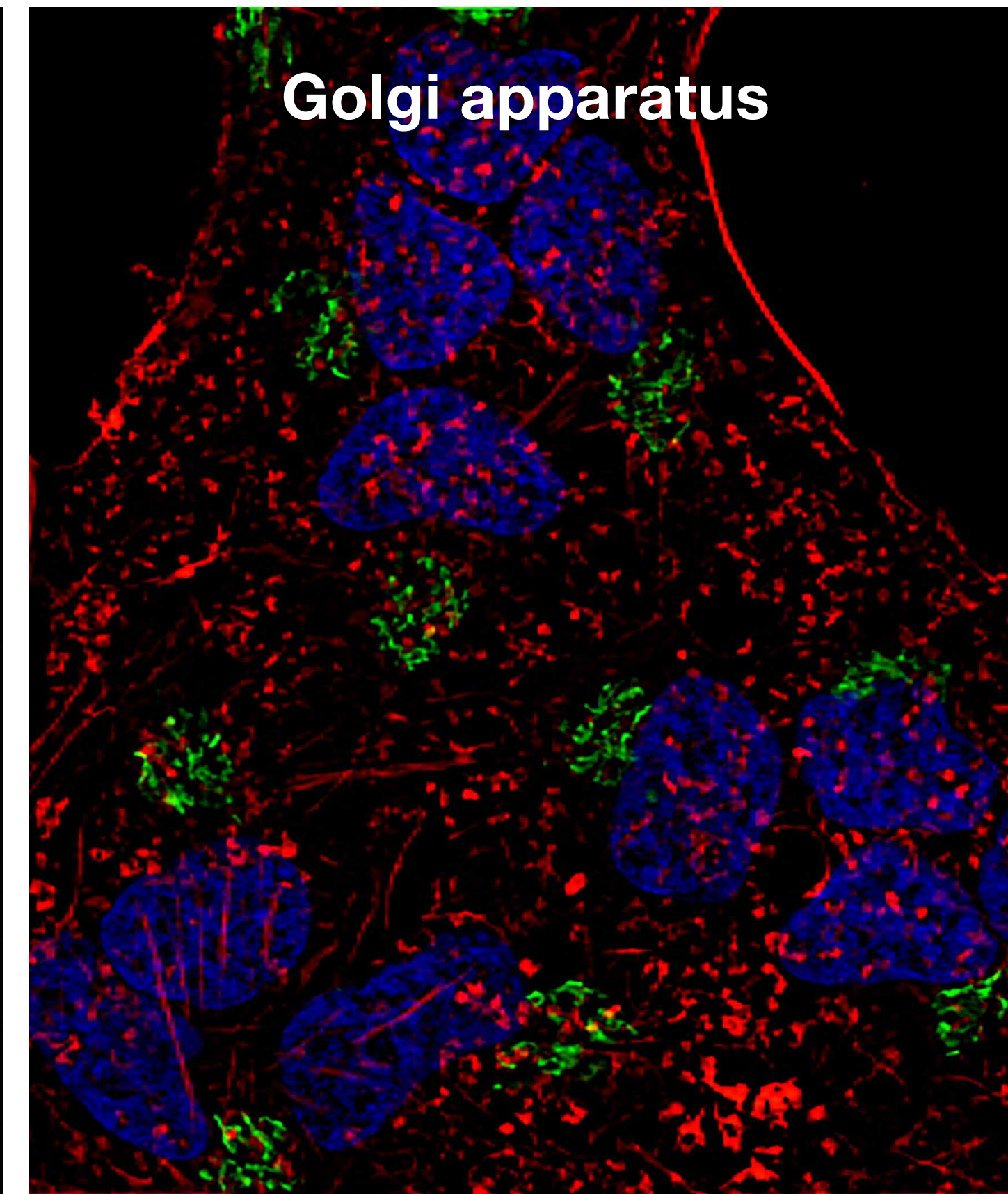
Cell structure/organelle	Target	Antibody Cat. No.
Nucleus	Lamin A	MA1-06101
	Lamin A/C	MA5-35284
	Lamin B1	702972
	LSD1	703761
Nucleolus	Fibrillarin	480009
Centrosome	BUBR1	MA1-16577
	Gamma tubulin	MA1-19421, PA5-34815



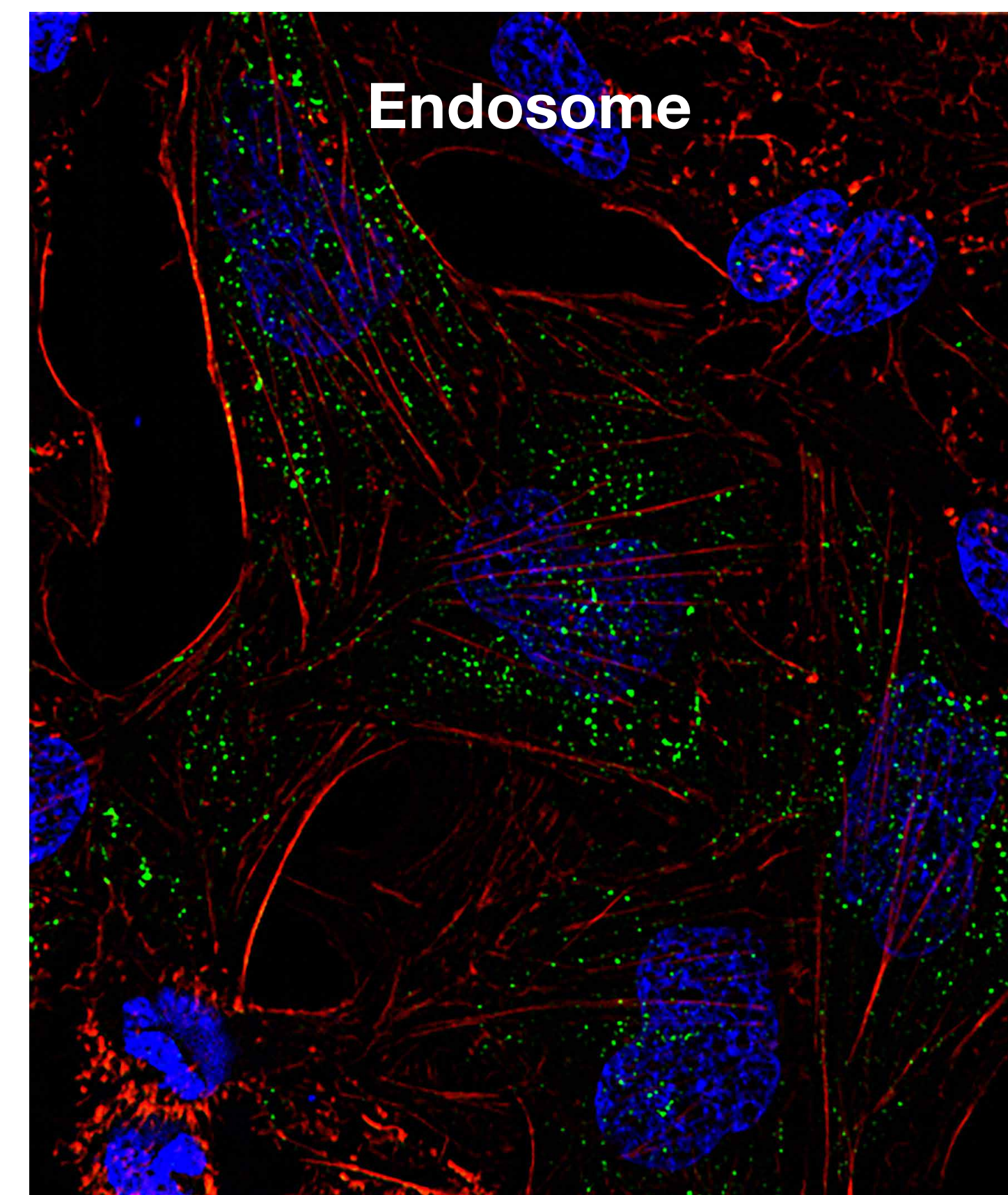
Plasma membrane



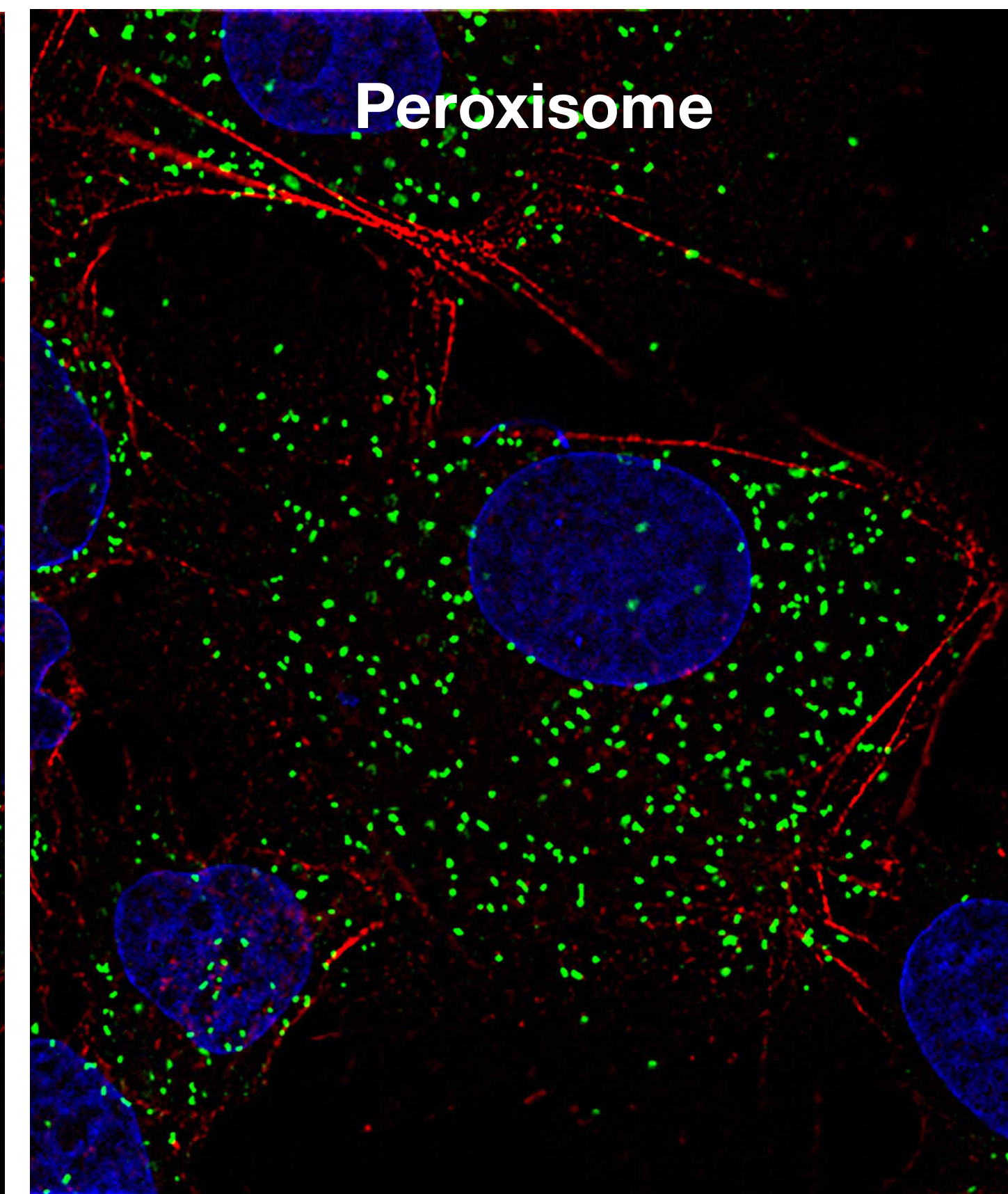
Mitochondrion



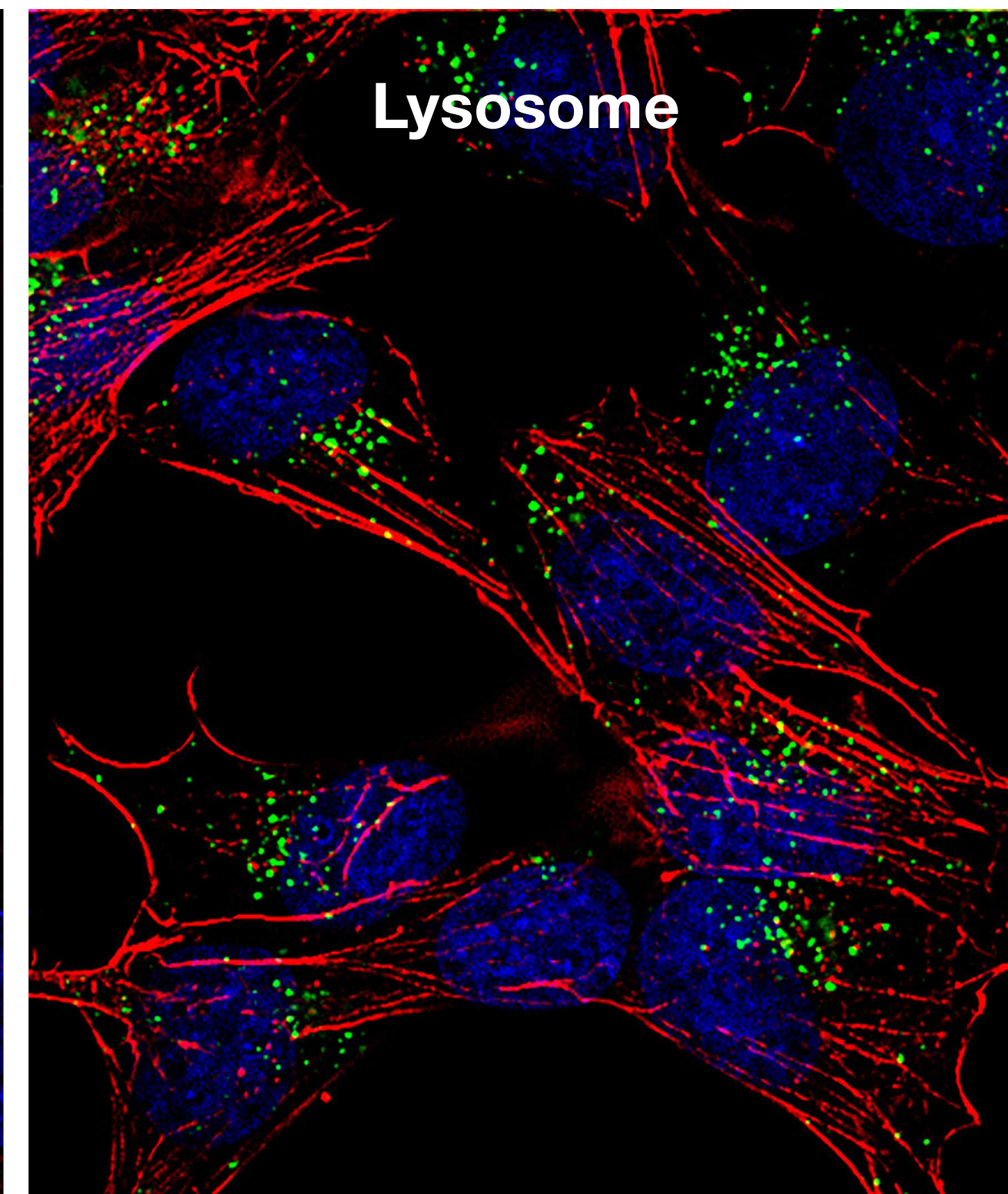
Golgi apparatus



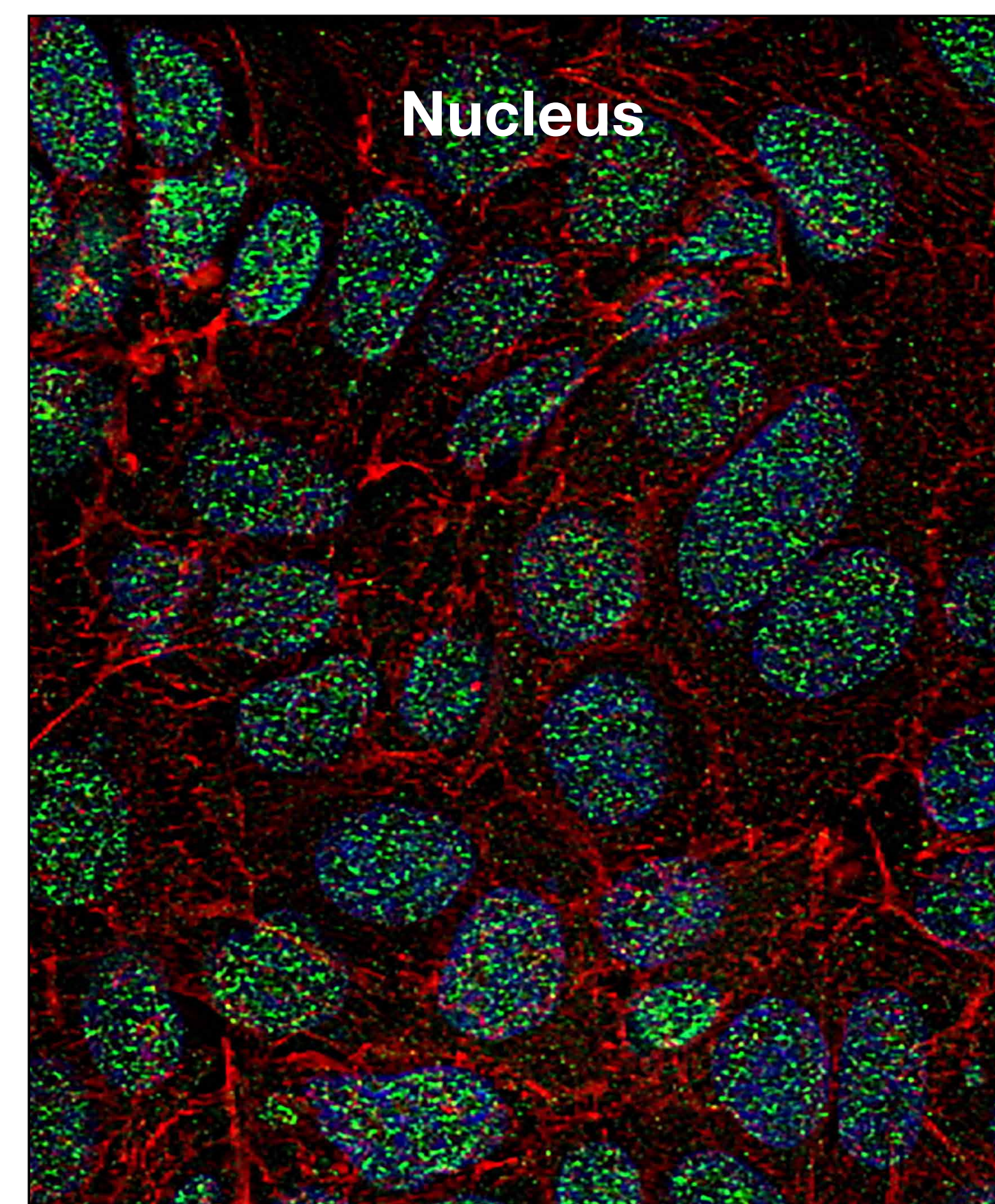
Endosome



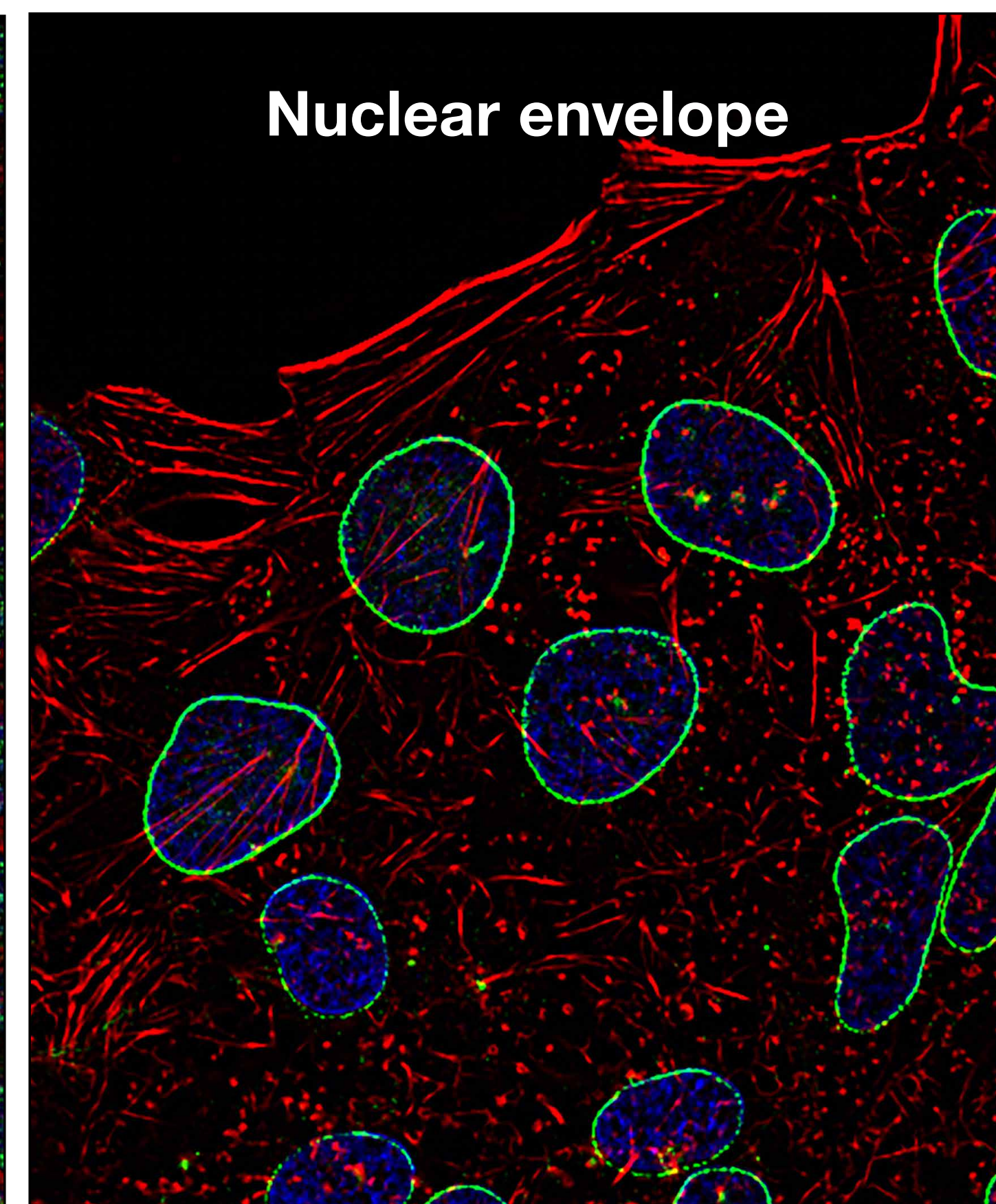
Peroxisome



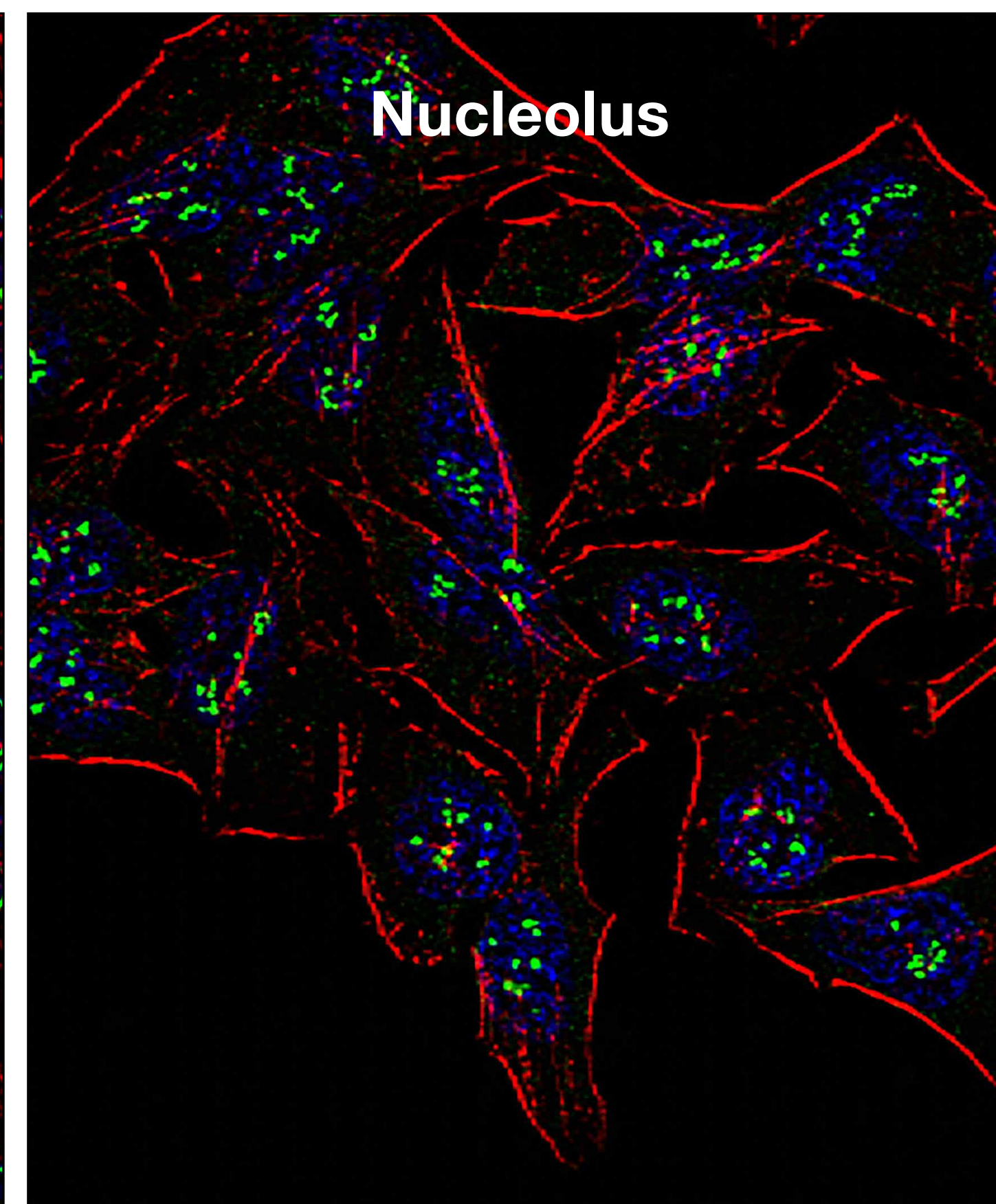
Lysosome



Nucleus



Nuclear envelope



Nucleolus

Conjugated antibodies and organelle stains by color

	Invitrogen™ antibodies and dyes	Blue	Green	Yellow/orange	Red	Deep red
Cell membrane	ZO-1 antibodies		339188	MA3-39100-A555		MA3-39100-A647
	CellLight reagents (live cells; fixable)	C10606	C10607	C10608		
	Wheat germ agglutinin, Alexa Fluor conjugates (live cells; fixable)	W11263	W11261	W32464	W21404	W32466
	CellMask plasma membrane stains (live cells; fixable)		C37608	C10045		C10046
Cytoplasm	CellTracker dyes	CMAC dye (C2110), CMF_HC dye (C12881), BMQC dye (C10094)	CMFDA dye (C7025)	CMRA dye (C34551), CM-Dil dye (C7000)	CMTFX dye (C34552)	C34565
	HCS CellMask stains (cytoplasm and nucleus for whole-cell demarcation)	H32720	H32714	H32713	H32712	H32721
Cytoskeleton	Beta-3 tubulin antibodies		53-4510-82			
	Alexa Fluor conjugated phalloidins (fixed cells)	A22281, A30104	A12379	A30106, A12380	A12381	A30107
	CellLight reagents (live cells; fixable)		Actin (C10582), tubulin (C10613), talin (C10611)	Actin (C10583), tubulin (C10614), talin (C10612)		
	Tubulin Tracker dyes (live cell)		T34075			T34076
Endoplasmic reticulum	CellMask Actin Tracking stains (live cells; fixable)		A57243	A57244		A57245
	Galnexin antibodies		MA3-027-A488	MA3-027-A555		MA3-027-A647
	ER dyes (fixed cells)		SelectFX ER kit (S34200)		Concanavalin A (C11253)	
	CellLight ER BacMam 2.0 reagents (live cells; fixable)		C10590	C10591		
Golgi apparatus	BODIPY ER-Tracker stains (live cells; fixable)		E34251		E34250	
	GM130 antibodies		PA1-077-A488	PA1-077-A555		PA1-077-A647
	Lectin HPA dyes		L11271		L32454	
	CellLight Golgi BacMam 2.0 reagents (live cells; fixable)		C10592	C10593		
Mitochondrion	BODIPY ceramide dyes (live cells; fixable)		B22650		B34400	
	HSP60 antibodies		MA3-012-A488	MA3-012-A555		MA3-012-A647
	CellLight Mitochondria BacMam 2.0 reagents (live cells; fixable)		C10600	C10601		
	MitoTracker probes (live cells; fixable)		M7514	M7510	M7513, M22425	M22426
Nucleus	Nuclear dyes (fixed cells)	DAPI (R37606)			TO-PRO-3 stain (T3605)	
	SYTO nucleic acid stains (fixed cells)	S11348	S7020	S11368		S11381
	Nuclear dyes (live cells)	Hoechst 33342 stain (H3570), Hoechst 34580 stain (H21486)	SYTO 9 Green stain (S34854)	SYTO 82 Orange stain (S11363)		SYTO Deep Red stain (S34901)
	ReadyProbes reagents (for live cells; fixable)	NucBlue Live reagent (R37605), NucBlue Fixed reagent (R37606)			NucRed Live reagent (R37106)	
	CellLight Nucleus and CellLight Histone BacMam 2.0 reagents (for live cells; fixable)	Nucleus-CFP reagent (C10606)	Nucleus-GFP reagent (C10602), Histone-GFP reagent (C10594)	Nucleus-RFP reagent (C10603), Histone-RFP reagent (C10595)		
	HCS NuclearMask stains (live and fixed cells)	H10325			H10326	H10294
Nucleolus	SYTO RNaselect stain (fixed cells)		S32703			
Endosome	RAB11A antibodies	MA7-00184-A488				
	CellLight Early and Late Endosomes BacMam 2.0 reagents (live cells; fixable)		Early (C10586), late (C10588)	Early (C10587), late (C10589)		
Lysosome	LAMP2 antibodies		MA1-205-A488	MA1-205-A555		MA1-205-A647
	CellLight Lysosomes BacMam 2.0 reagents (live cells; fixable)		C10507	C10504		
Autophagosome	Lysotracker probes (live cells)	L7525	L7526	L7528		L12492
	ATG9A antibodies		MA1-149-A488		MA1-149-A555	MA1-149-A647
	Premo Autophagy Sensor for LC3 recruitment		P36235	P36236		
	Premo Autophagy Tandem Sensor for LC3B migration from autophagosome to autolysosome			EmGFP to TagRFP (P36239)		
Peroxisome	Premo Autophagy Sensor targeting p62		P36240		P36241	
	PMP70 antibodies		PA1-650-A488	PA1-650-A555		PA1-650-A647
Peroxisome	SelectFX kit (fixed cells)		S43201			
	CellLight BacMam 2.0 reagents (live cells; fixable)		C10604			