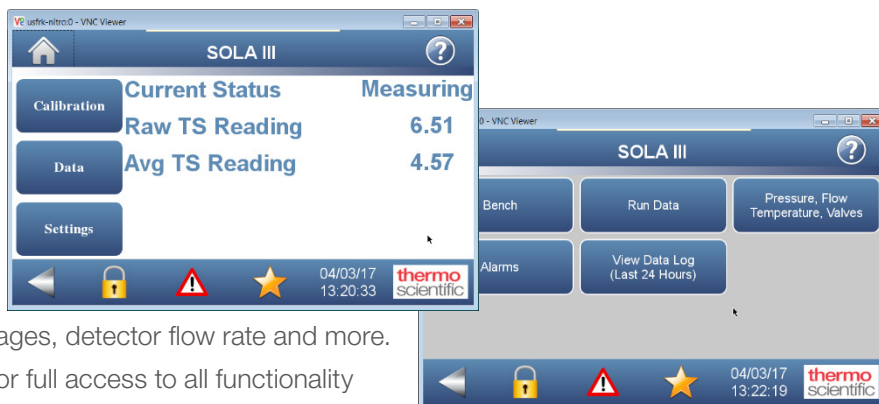


# Thermo Scientific SOLA iQ to SOLA II Comparison

## Graphical User Interface

- Replacing the four push button display of the SOLA II is an intuitive, heavy duty front panel mounted 7" color touchscreen user interface to access analyzer functions and diagnostic data.
- Read outs can include Sulfur concentration, oven and furnace temperature, PMT and lamp voltages, detector flow rate and more.
- Connect securely from your PC or mobile device for full access to all functionality available from the touch screen.

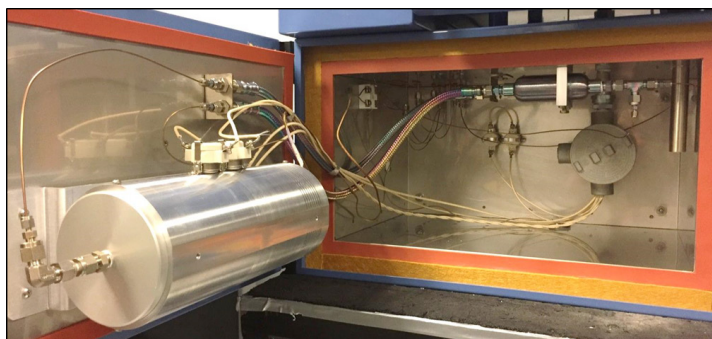


## AutoCONFIG Software

- Replacing the SOLAWeb software of the SOLA II, users can now run Thermo Scientific AutoCONFIG software from a local networked PC for security protected access to all analyzer setup and configuration parameters and all process and diagnostic data.
- Download from the SOLA iQ up to 30,000 data records (process and analyzer functions), typically up to 24 hours of records (user configurable)

## Maintenance

- The new pyrolyzer is mounted on the oven door to allow easy access
- Straight ceramic pyrolyzer tube is robust and can be replaced in a matter of minutes without removal of the pyrolyzer from the oven assembly
- Pyrolyzer heater designed to last up to 5 years of continuous use – the heater can be replaced without the need to remove the pyrolyzer from the oven assembly
- The new purge controller for Div 1 and Zone 1 installations now includes the facility to automatically disconnect both power and signal conductors without the need for any additional customer supplied hardware
- The SOLA iQ has a wealth of analogue and digital inputs and outputs as standard, refer to the specification table on reverse for details



Oven and Pyrolyzer

| Performance               | SOLA iQ  | SOLA II  | Comparison   |
|---------------------------|--|--|--|
| Detector                  | Pulsed UV Fluorescence (PUVF) with Pyrolyzer for Total Sulfur Measurement  | Pulsed UV Fluorescence (PUVF) with Pyrolyzer for Total Sulfur Measurement  | Same   |
| Measuring ranges          | Full scale ranges from 2ppm to 100% - refer to full specification table for range details  | Full scale ranges from 2ppm to 100% - refer to full specification table for range details                                | Same   |
| Precision (1x std dev)    | ±1% of full scale or ±2% of full scale - range of model type dependent   | ±1% of full scale or ±2% of full scale - range of model type dependent   | Same   |
| Lower limits of detection | Defined as 3x standard deviation at low level sample   | Defined as 3x standard deviation at low level sample   | Same   |
| Linearity                 | Ranges ≥10ppm: ±2% of full scale, one sample injection per minute<br>±1% of full scale, two sample injections per minute   | Ranges ≥10ppm: ±2% of full scale, one sample injection per minute<br>±1% of full scale, two sample injections per minute | Same   |
|                           | Ranges ≤10ppm: ±2% of full scale, two sample injections per minute   | Ranges ≤10ppm: ±2% of full scale, two sample injections per minute   | Same   |
| Number of process streams | Single or multiple (up to 4) - stream selector by others, stream control via SOLA iQ pneumatic outputs   | Single, dual or quad - stream selector by others, stream control via SOLA II pneumatic outputs                           | Similar  |
| Connectivity              | SOLA iQ  | SOLA II  | Comparison   |
| Analog outputs            | 4x 4-20mA outputs  | 1x 4-20mA output as standard, second 4-20mA output optional  | SOLA iQ has more analog outputs as standard  |
| Analog inputs             | 4x inputs (user configurable as 4-20mA or 0-5V)  | Optional 2x 4-20mA input   | SOLA iQ has more analog IP as standard   |
| Serial                    | 4x user configurable RS232 or RS485  | Optional RS232 or RS485 user configurable  | SOLA iQ has more serial communications as standard                                       |
|                           | TCP/IP Ethernet<br>Connect via Modbus for remote access and control of all analyzer functions and data. Connect with RS485 or TCP/IP.  | Optional TCP/ IP Ethernet<br>All communications options are priced accordingly   |  |
| Relay & Digital Outputs   | 8x relay outputs rated 6A at 240VAC  | 2x relay contacts, one for a global alarm and one indicates SOLA II is in calibration mode                               | SOLA iQ has more relay and digital IO as standard  |
|                           | 8x solid state relay outputs 0.2A at 120 VAC   | None   |  |
|                           | 12 digital inputs  | None   |  |
| Graphical User Interface  | Front panel mounted 7" color touchscreen user interface to access analyzer functions and diagnostic data including sulfur concentrations, oven and furnace temperatures<br>PMT and lamp voltages, detector flow rate and more  | Front panel mounted pushbutton display   | New color Graphical User Interface for SOLA iQ   |
|                           | Connect securely from a remote location on your PC or mobile device to access all front panel display functions.   | SOLAWeb software   |  |
| AutoCONFIG™ software      | Security protected access to all analyzer setup and configuration parameters and all process and diagnostic data. Connect via a standard PC across your Local Area Network. Download 30,000 data records (process and analyzer functions), typically up to 24 hours of records (user configurable) | SOLA II Workstation software   | SOLA iQ now uses the Thermo Scientific AutoCONFIG software with greater user flexibility |

Find out more at [thermofisher.com/SOLAIQ](http://thermofisher.com/SOLAIQ)