



# In-air pathogen surveillance solution

## Quick start guide

**AerosolSense 2900 Sampler**

**Part Number 121560-00**

25June2021








## Setting up the sampler

1. Place the sampler on a flat surface 2 to 5 feet off the ground with the inlet and exhaust unobstructed.
2. Plug the power cord into an outlet with the appropriate voltage.
3. Toggle the power switch to the ON position.
4. Sampler is ready for sample cartridge installation.

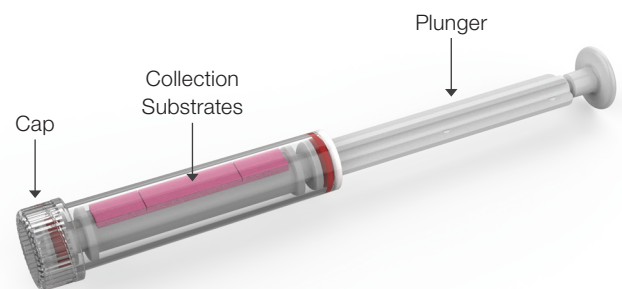
By default, the device is set to continuous sampling.

## LED GUIDE

| LED COLOR   | LED INDICATION  | ACTION TO TAKE                                   |
|---|---|--|
| <br>Blinking Green     | Cartridge was installed correctly<br>(door open)              | Close door.                                      |
| <br>Yellow           | Ready for sampling<br>(door closed)                           | No action required. Sampling will start shortly. |
| <br>Green            | Active sampling<br>(door closed)                              | No action required.                              |
| <br>Non-illuminating | Unit off  | No action required.                              |
| <br>Red              | Door closed – sampling error<br>Door open – cartridge removal | Check the door and cartridge states.             |

## Sample cartridge parts

The Thermo Scientific™ AerosolSense™ 2900 Sampler can only use this specific sample cartridge.

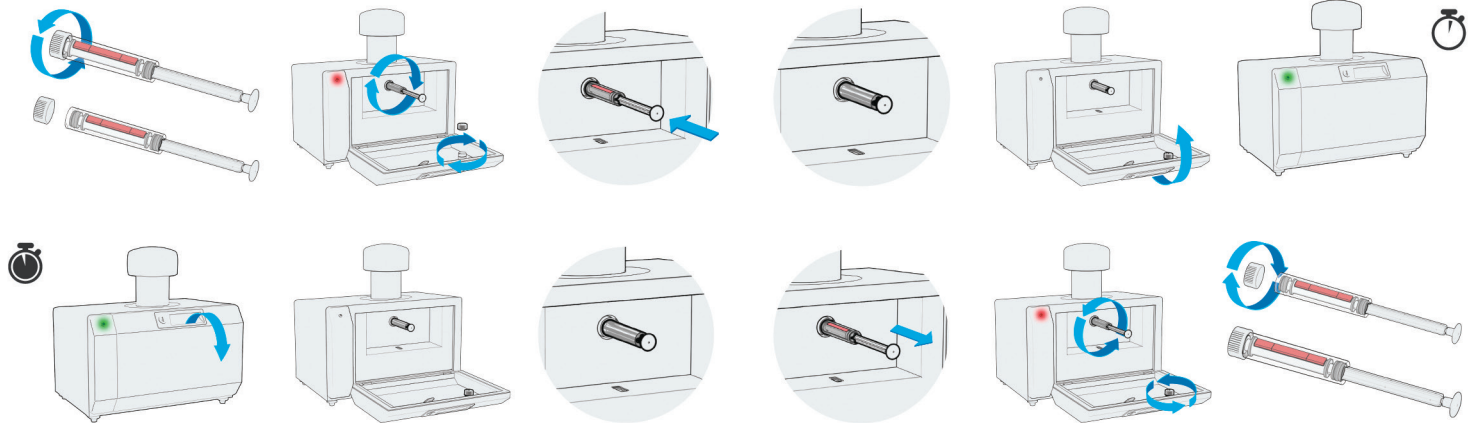


Two training sample cartridges are included with the sampler. These are for training purposes only. Do not use for active sampling or send to lab for testing.

# Installing and removing the sample cartridge

## Installing the sample cartridge

1. Open the front door of the sampler.
2. Unscrew the sample cartridge cap and screw it onto the tray for storage.
3. Align the cartridge with the opening on the sampler.
4. Turn the cartridge clockwise to screw it on until it no longer turns. If the cartridge is installed correctly, the collection substrate will be facing up.
5. Fully push in the plunger.
6. Close the door. The LED will be solid yellow and will turn solid green when active sampling starts.



## Removing the sample cartridge

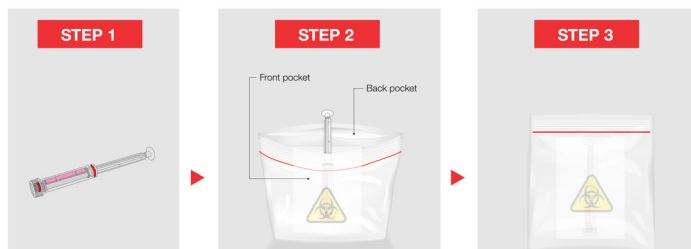
7. When the sampling time has elapsed, open the front door.
8. Pull out the plunger all the way.
9. Turn the cartridge counterclockwise until it disengages.
10. Seal the cartridge with the cartridge cap.
11. Place the cartridge into the biohazard bag.

### The sample is ready to be sent to a lab for testing.

See below for next steps depending on whether you are using an on-site lab, a third-party lab, or the Thermo Fisher Scientific™ Testing Services.

## Testing services

### Sending sample cartridge to lab



**Step 1:** The cap of the sample cartridge must be on before inserting the cartridge into the biohazard bag. One sample cartridge per biohazard bag.

**Step 2:** Insert the sample cartridge into the front pocket containing the absorbent pad. The back pocket remains empty.

**Step 3:** Press firmly on the biohazard bag seal to securely close.

### Self-testing on-site lab

Follow the AerosolSense sample preparation procedure. To download the procedure, visit the In-Air Pathogen Surveillance Solution support page at [www.thermofisher.com/apssupport](http://www.thermofisher.com/apssupport).

### Thermo Fisher Scientific testing services

The following steps apply if the sample is being mailed to an external partner laboratory as part of the testing service.

#### All shipping material is included.

1. After placing the sample cartridge into the biohazard bag, assemble the shipping box.
2. Place the sealed biohazard bag that contains the sample cartridge into the shipping box. Close and seal the box.
3. Adhere the pre-printed shipping label to the box and send it out for shipping to the lab.



## In-air pathogen surveillance solution support



Scan the QR code for access to:

- Instructions
- Guides
- FAQs
- Videos
- Workflows

**USA**  
27 Forge Parkway  
Franklin, MA 02038  
support.apd@thermofisher.com  
(800) 209-8763

**ThermoFisher**  
SCIENTIFIC

Find out more at [thermofisher.com/apssupport](https://thermofisher.com/apssupport)