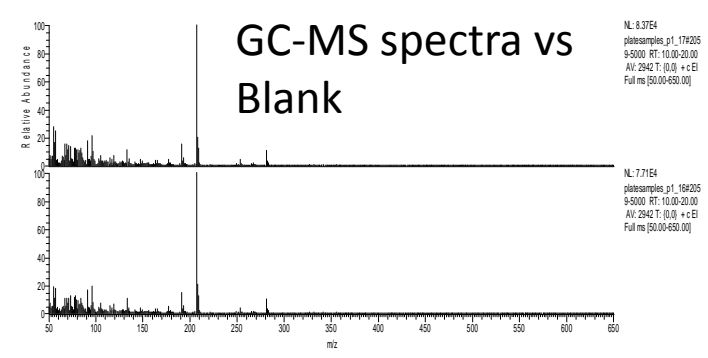
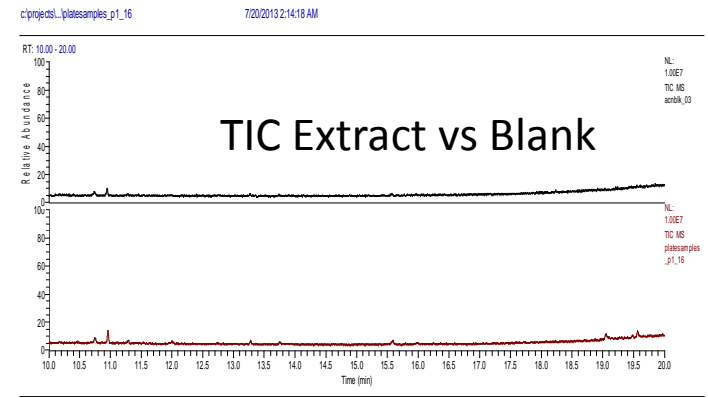
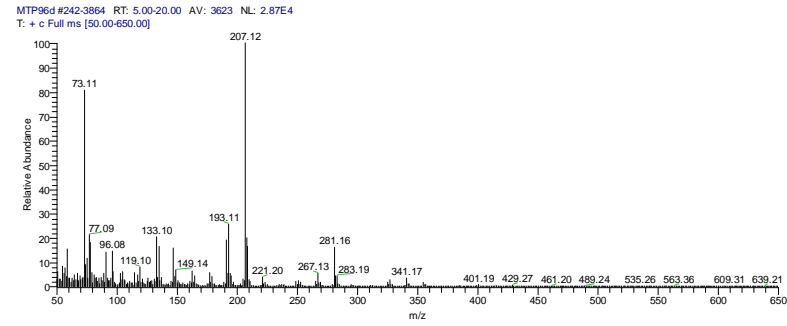
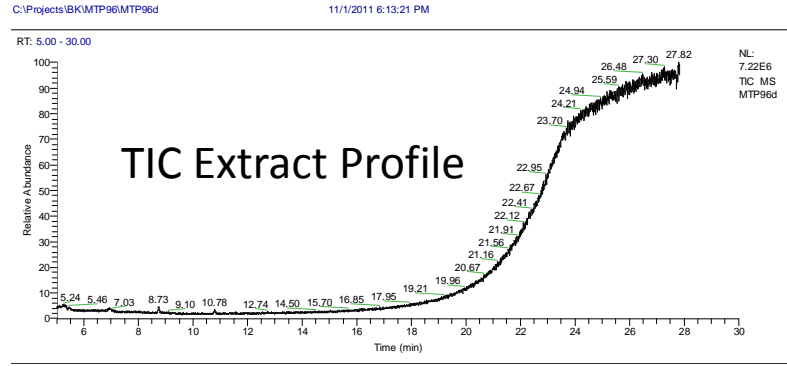


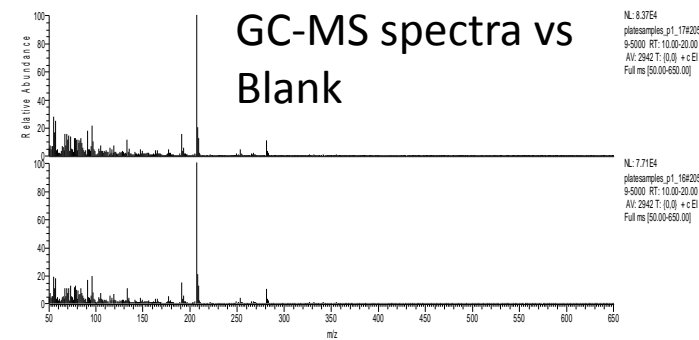
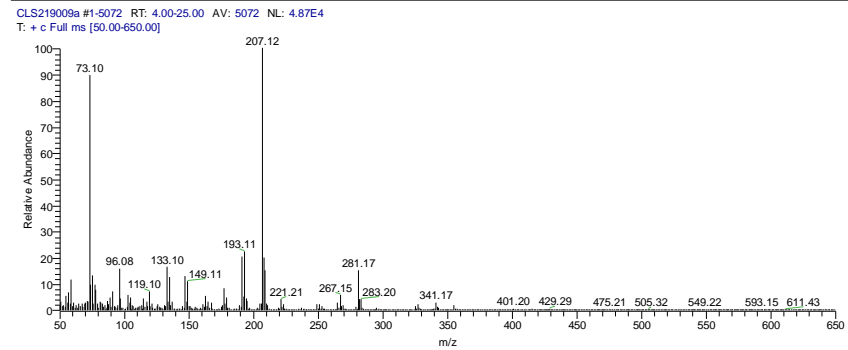
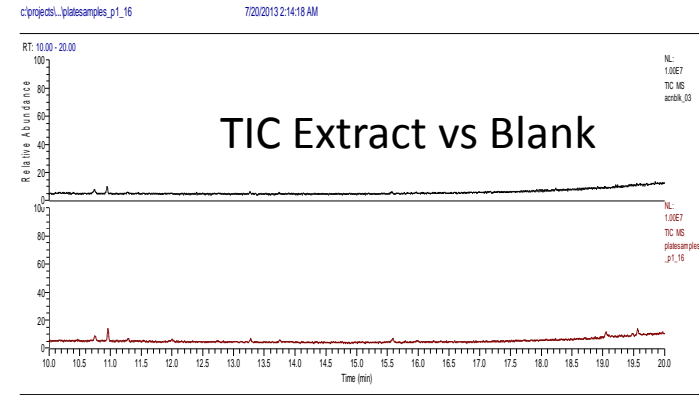
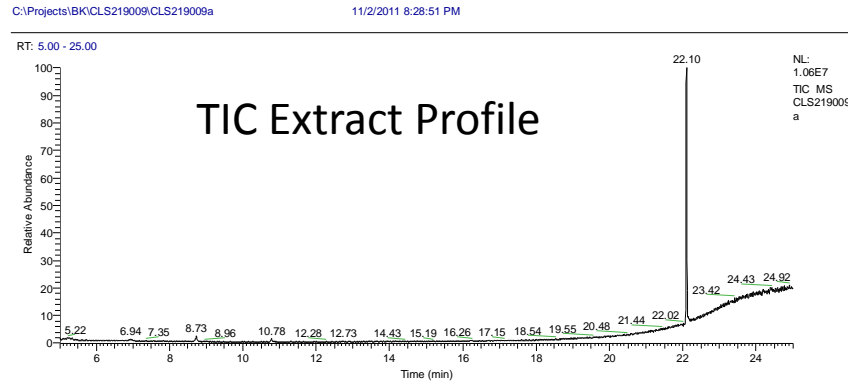
60180-P201 60180-P211

Cat. No.	Description	Material	Total Height	Total Volume (μL)
60180-P201 60180-P211	96-Well Deep Well Microplate	PP	41.6	1000



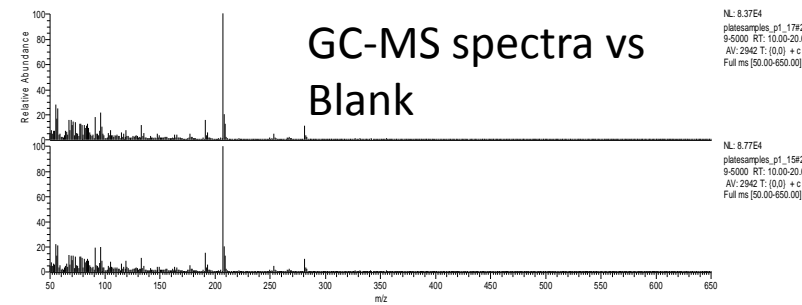
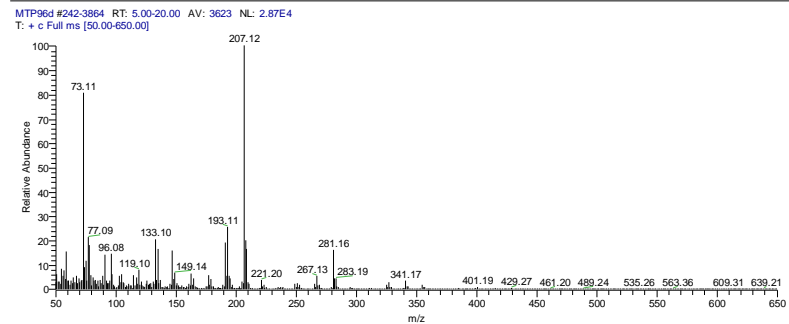
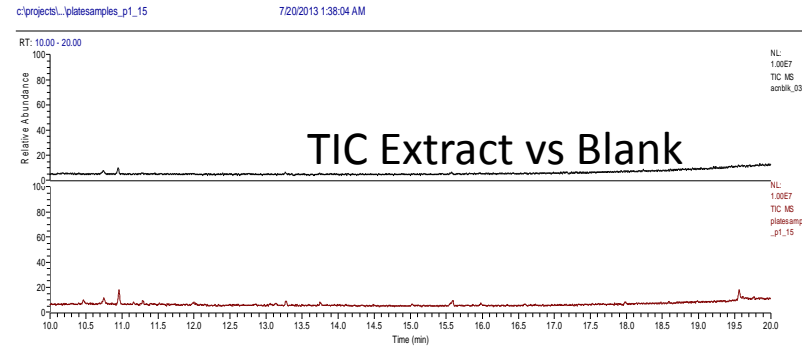
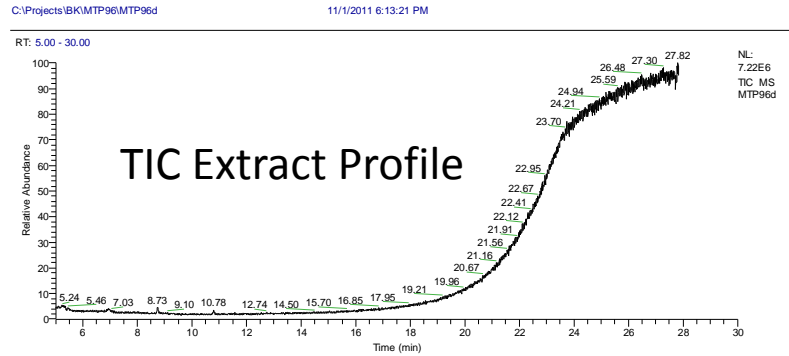
60180-P202 60180-P212

Cat. No.	Description	Material	Total Height	Total Volume (μL)	Pack of
60180-P202 60180-P212	96-Well Square Well Microplate	PP	44.4	2000	50



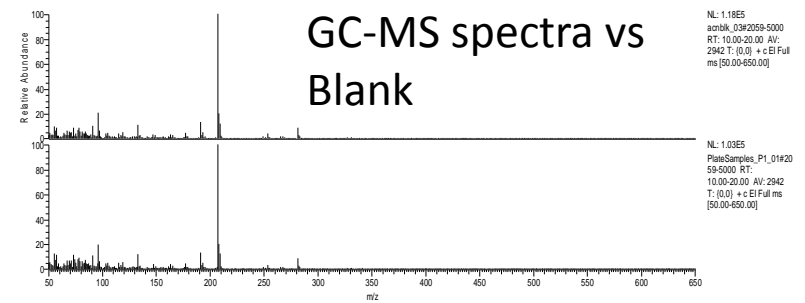
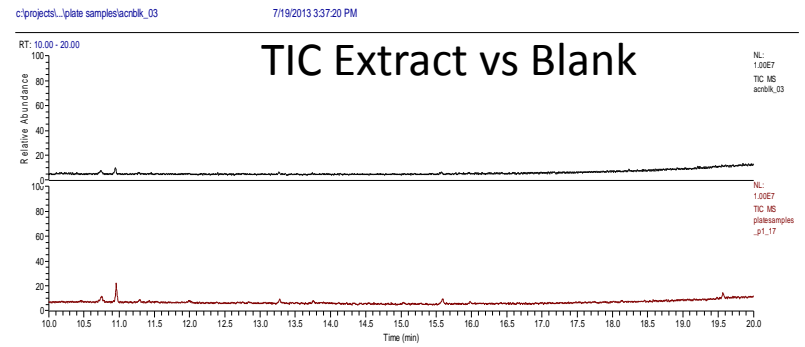
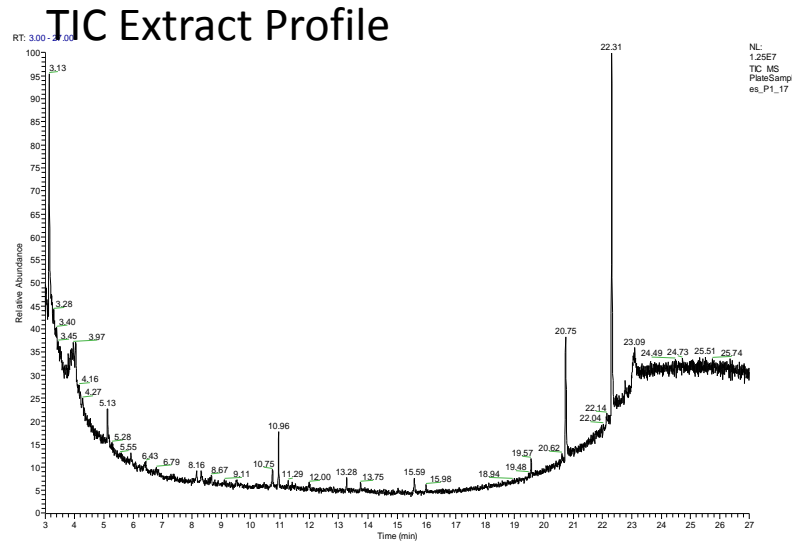
60180-P209 60180-P219

Cat. No.	Description	Material	Total Height	Total Volume (μL)	Pack of
60180-P209 60180-P219	96-Well Deep Well Microplate	PP	27.0	1000	50



60180-P205 60180-P215

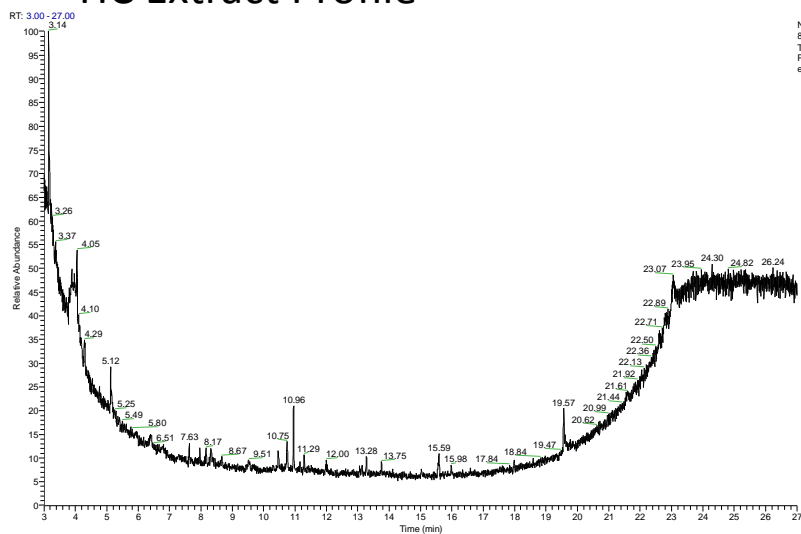
Cat. No.	Description	Material	Total Height	Total Volume (μL)
60180-P205 60180-P215	96-Well Microplate	PP	14.7	350



60180-P206 60180-P216

Cat. No.	Description	Material	Total Height	Total Volume (μL)
60180-P206 60180-P216	96-Well Microplate	PP	14.7	270

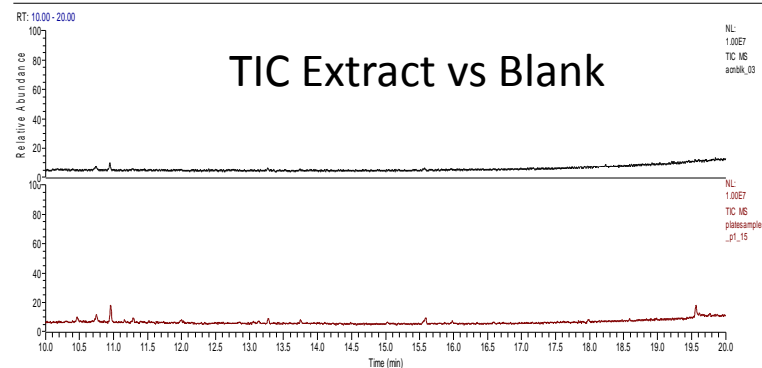
TIC Extract Profile



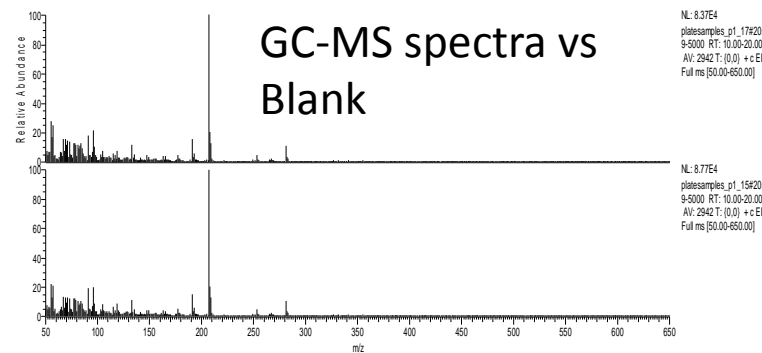
c:\project\platesamples_p1_15

7/20/2013 1:38:04 AM

TIC Extract vs Blank



GC-MS spectra vs Blank



60180-P207 60180-P217

Cat. No.	Description	Material	Total Height	Total Volume (μL)
60180-P207 60180-P217	96-Well Microplate	PP	14.7	220

