

Software

Qtegra Intelligent Scientific Data Solution Software

Delivering solutions
Driving efficiency

Qtegra Intelligent Scientific Data Solution Software

The Thermo Scientific™ Qtegra™ Intelligent Scientific Data Solution (ISDS) Software is a software platform built on four pillars, designed to deliver a complete solution for laboratories depending on productivity, scalability, and quality results to achieve their goals.



Intelligent

Built-in intelligence facilitates the full workflow from sample to results. Laboratories can be more reactive and profitable, with software that facilitates data driven decisions more efficiently.



Scientific

Developed with scientific integrity, Qtegra ISDS Software delivers high quality, reliable data that labs can trust. Data transparency lets laboratory personnel focus on other tasks while ensuring the utmost confidence in scientific collaboration.



Data

Data is the key to success for all laboratories. Qtegra ISDS Software can help labs excel at efficiently delivering consistent and relevant results with extensive tools to effectively acquire and manage data.



Solution

Laboratories can enjoy the familiarity of common software across multiple analytical systems while differentiating their offering through customizable and application specific workflows.

Routine analysis

High-throughput production and contract testing laboratories benefit from the assistance and economy imparted through Qtegra ISDS Software. The design facilitates integration in a growing lab ecosystem, while intuitive workflow features, interference management and pertinent data visualization lets laboratories acquire and interpret data confidently, quickly, and with ease. Laboratories performing routine testing can ensure profitability through productivity, quality data, and right first-time analysis.

Scientific research

Researchers looking to push the boundaries of innovation in their field can focus intently on science, confident in the knowledge that Qtegra ISDS Software provides flexibility of customized configurations with multiple acquisition modes and data processing tools to probe and access new data. Within a framework that is exceptionally easy to set up and switch between configurations, Qtegra ISDS Software enables research labs with multiple users to focus on the data rather than the analysis.

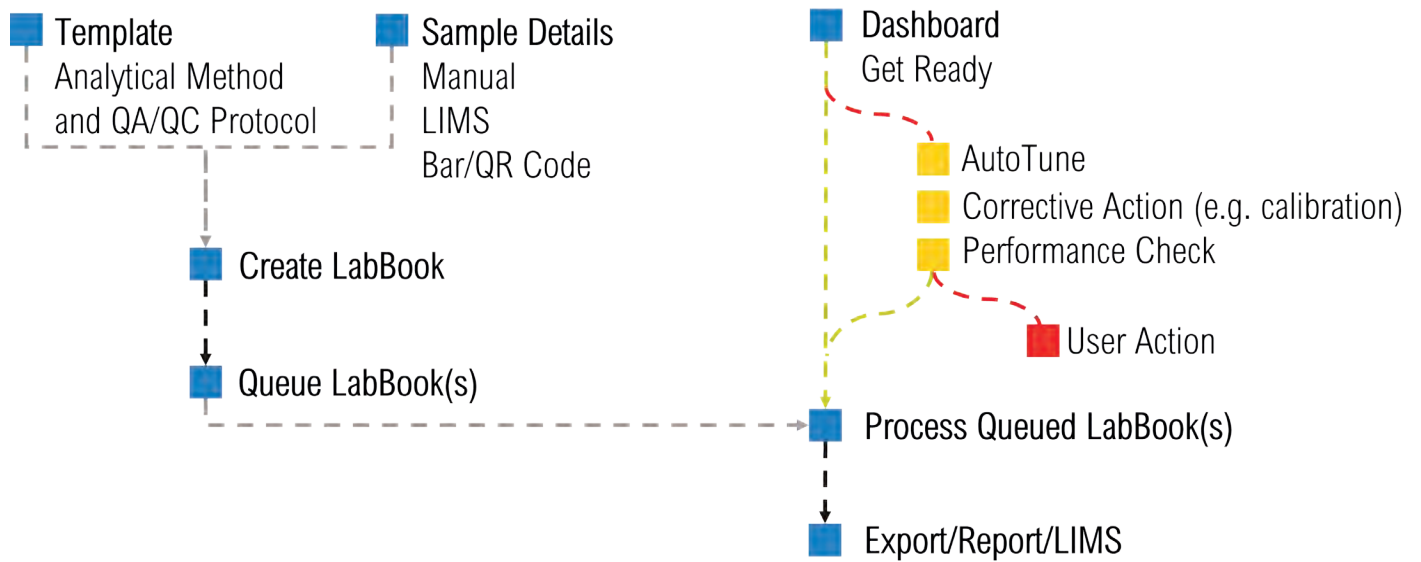
Regulated industries





Food, environmental, and pharmaceutical QA/QC are amongst the sectors that are constantly being challenged to meet rising standards of quality and to comply with rigorous regulatory requirements, whether they be analytical or procedural. Qtegra ISDS Software recognizes these challenges and includes the necessary tools for laboratories to rapidly meet their compliance goals.



Rely on intelligent and data-dependent workflows that assist the daily work and drive efficiency and profitability.

Smart software features remove the complexity so that labs can save time, quickly react to changing circumstances, and enjoy consistency, even with rotating personnel.



Workflow feature	Your benefit
 Simple, intuitive, guided user input sequence	Faster setup time reduces labor costs
 System DASHBOARD presents critical information in one clear view	Analysts can react more quickly to changing instrument status
 GET READY: fully automated, data driven startup process	Shorter startup times aid consistent instrument performance
 Analysis scheduled from templates, digital readers, and LIMS inputs	Operator-independent analysis saves setup times and reduces errors



Integrated lab assistant saves time, simplifies sample preparation, and intelligently assists data analysis.



Lab is quickly alerted to QC anomalies and samples above Maximum Allowable Concentrations.



Integrated, flexible QA/QC protocols minimize failures and prevent costly re-runs.



Intuitive color-coding of data and reports aids faster interpretation and decision making.



Calculations are transparently applied in real time and can be audited easily.



Prescriptive sample dilutions save labor and mitigate errors.



Intelligent uptake and rinses optimize throughput and limit carryover challenges.



Intelligent over-range autodilution of high concentration samples automatically generates usable data without user input or delays.

It's not just about finding answers, it's about finding the right answers.

Scientists and laboratories rely on scientifically sound data. Qtegra ISDS Software is built by scientists, for scientists, ensuring high quality, reliable results you can trust so you can focus on the science.

Data processing

All data processing can be achieved within Qtegra ISDS Software thanks to integrated analytical statistics and internationally recognized algorithms.

Data transparency

Full transparency of all calculations from raw data to the end result delivers the confidence you expect and flexibility to fully interrogate data.

Data standardization

A comprehensive database for Certified Standards enables international data comparability through referencing and normalization to recognized standards.

Qtegra ISDS Software helps labs achieve consistently accurate results through Interference Management. Many analytical techniques are prone to interferences that are difficult to remove. Qtegra ISDS Software can help identify and automatically mitigate interferences with full visibility.

The Reaction Finder method development assistant for Thermo Scientific™ TQ-ICP-MS analyzers intelligently selects the optimal measurement mode settings based on method analytes, removing the complexity from TQ technology and dramatically decreasing method development time.

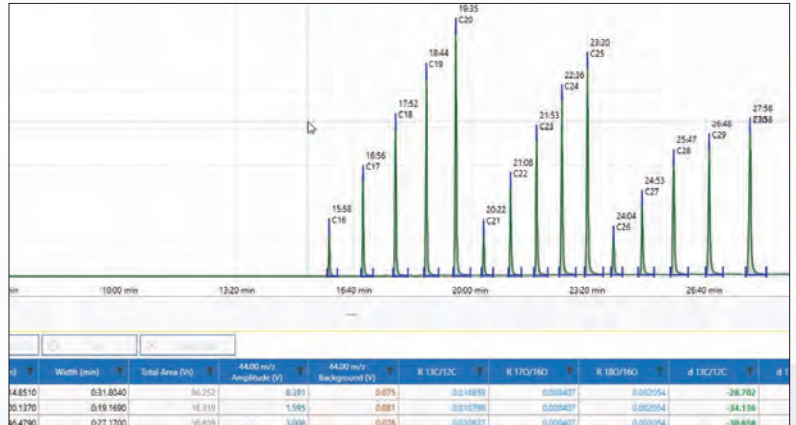
Interelement correction (IEC) for the Thermo Scientific™ iCAP™ PRO Series ICP-OES provides the ability to correct for interferences based on intensity or concentration and conform with regulatory methods, such as EPA Method 200.7.



Gain deeper insights and accelerate innovation with the flexibility of different data evaluation modes and specific workflows.

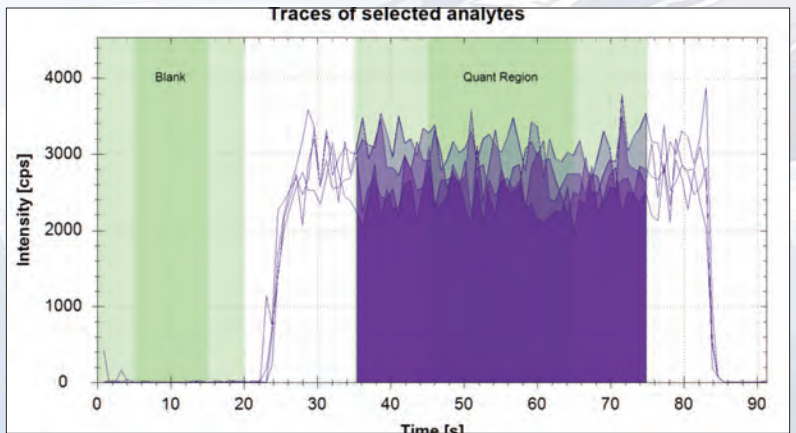
IRMS Chromatogram

Enjoy simple and reliable compound-specific IRMS or trace elemental speciation with a fully integrated workflow including chromatographic device control and dedicated chromatographic data processing.



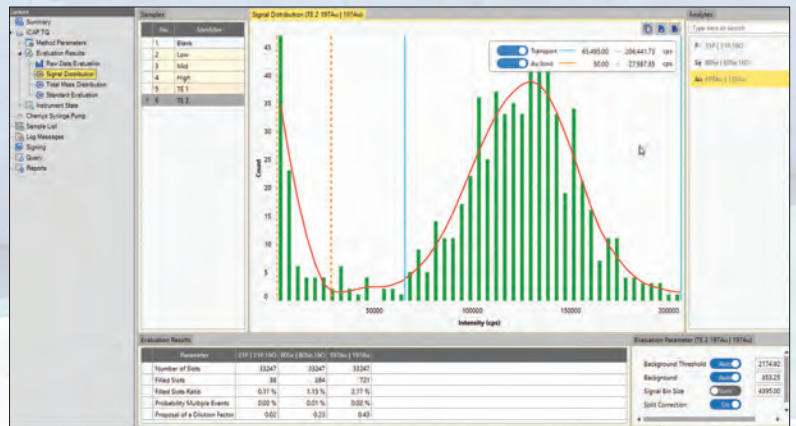
Laser ablation

Expand capabilities in spatial and depth characterization with solutions to integrate laser ablation systems and split-flow analysis with third-party plug-ins and laser ablation specific data evaluation.



Single particle

Explore the expanding fields of single cell and nanoparticle analysis with automated workflows and dedicated sample handling packages.



How do you manage large volumes of data in your laboratory?

Leverage data management and flexible and intuitive data processing tools within Qtegra ISDS Software to excel at delivering consistent data on time.





Save time and boost profitability that comes from a common software platform.

Leverage Qtegra ISDS Software to save on critical resources and facilitate integration of workflows and instruments into a laboratory application portfolio.

Key analytical steps that are replicated and use one common workflow language across a range of instrumentation enable faster adoption of new technologies and a lower learning curve that releases flexibility of personnel resources.

A common, top-to-bottom, logical and guided workflow that intelligently highlights when input is required ensures consistent method creation, regardless of the operator.

Interoperability

Analytical workflows can be easily customized to the application needs. Intuitive setup with a modular, plug-in approach and automated change between configurations facilitates fast start up and pain-free operation in a lab with multiple application needs.

Automation

Spend time on more important tasks, confident in the knowledge that automation and security features in Qtegra ISDS Software will keep your unattended analysis running smoothly and automated shutdown will economize lab utilities.

Scalability

Qtegra ISDS Software boasts a range of features, such as language packs, number formats, and regional-specific settings, that facilitate adoption and integration into a lab and its protocols.

Connectivity

Qtegra ISDS Software has started the journey to facilitate integration of new technology into an instrument fleet with legacy system upgrades and method conversion.





Pharma

Easily comply with CFR Part 11 requirements and global regulatory standards knowing that Qtegra ISDS Software offers integrated regulatory compliance tools, total data security, and audit assurance.

Food

Accurately measure trace contaminants or confirm authenticity knowing that Qtegra ISDS Software facilitates analysis across multiple instruments with a common guided workflow.

Geoscience

Successfully collaborate knowing that Qtegra ISDS Software ensures standardization of data and facilitates meaningful data interpretation.

Environmental

Confidently run unattended analysis knowing that Qtegra ISDS Software will flag conspicuous data so you can react quickly to outliers that may indicate an environmental contamination.



Qtegra ISDS Software Dashboard with Delta Q GasBench Plus IRMS

Qtegra ISDS Software Platform

Intelligent | Scientific | Data | Solution

Qtegra ISDS Software is a Platform Solution developed by scientists, for scientists, that is rapidly expanding across Thermo Fisher Scientific instruments and solutions. Cross-device training and adoption of new instrumentation is faster and easier, allowing for increased flexibility in modern multi-technique laboratories.



To fulfil our mission to enable our customers to make the world healthier, cleaner, and safer, we have a commitment to help scientists solve their challenges through actively supporting the evolution of Qtegra ISDS Software through partnership with our customer base.

Learn more at thermofisher.com/qtegra

General Laboratory Equipment – Not For Diagnostic Procedures. © 2023 Thermo Fisher Scientific Inc. All rights reserved. Not all features highlighted in this document are available for all products operating with Qtegra ISDS Software. For further information about Qtegra ISDS Software features, please contact your local Thermo Fisher organization. All trademarks are the property of Thermo Fisher Scientific and its subsidiaries unless otherwise specified. **BR001610-EN 0523C**

thermo scientific