



Software

Helping scientists get closer to the truth

Ardia Platform

Digital transformation is a journey driven by the desire to fundamentally improve laboratory working practices by leveraging the latest advances in IT. The Thermo Scientific™ Ardia™ Platform allows the laboratory to harness the same technology.

In an era where laboratories are uncompromising in their pursuit of efficiency, the demand for software that seamlessly connects data, instruments, and scientists is on the rise.

Built using cloud technology, the Ardia Platform centralizes information, including scientific data and results, maximizes instrument utilization, and accelerates data analysis to help scientists get closer to the truth.

[Learn more >](#)

Bring your laboratory into a new era of connectivity with the Ardia Platform

Centralize

Revolutionize data management by bringing together all your data sources, formats, and applications into one platform. With centralized data, you gain unprecedented control, accessibility, and efficiency, enabling you to make data-driven decisions with confidence.

Unify

Say goodbye to the complexities of managing data scattered across various systems and locations. The Ardia Platform integrates with a growing list of software tools and applications for direct data access and automated data transfer, allowing you to harness the power of a unified platform and help eliminate data silos.

Streamline

Eliminate time-consuming manual data transfers with automated workflows via the Ardia Platform's Data Sync tool. Automatically transfer data to and from your repository for applications that are not yet connected so users can focus on what matters most.

Collaborate

Collaboration goes beyond just centralizing data and integrating software. With a single platform, you can easily share, access, and collaborate on data. Real-time data updates, shared dashboards, and collaborative tools facilitate efficient teamwork, accelerating project timelines and driving innovation.

Click on the tiles for more information:



Video: What is the Ardia Platform?



Thermo Scientific Ardia Platform

Home

Data Explorer

Instruments

Data Viewer

Data Insights

Thermo Scientific Ardia Platform

Core applications

- Data Explorer**
Browse and manage folders, files, and data objects stored in Ardia.
- Data Viewer**
Visualize and qualitatively analyze chromatography and mass spectrometry data.
- Instruments**
Manage, schedule, and monitor data acquisition on all instruments connected to Ardia.
- Data Insights**
Understand trends and derive insights from your data.

Utilities

- Audit Trail Viewer**
Display audited events, such as user access and data operations. Audit records including versioning and timestamps.
- Client Registration and Management**
Create and manage application registration codes utilized to connect Thermo Scientific desktop applications to Ardia.
- Global Settings**
Define administrative settings that are applied across the Ardia platform.
- IdP Configuration**
Configure, edit, and remove the identity providers used by Ardia.
- Users and Roles**
Add new users and manage existing users in Ardia. Define roles and user attributes and configure permissions.

Data management

Securing, managing, and effectively utilizing large volumes of scientific data stored across multiple devices in different formats can be challenging and time-consuming.

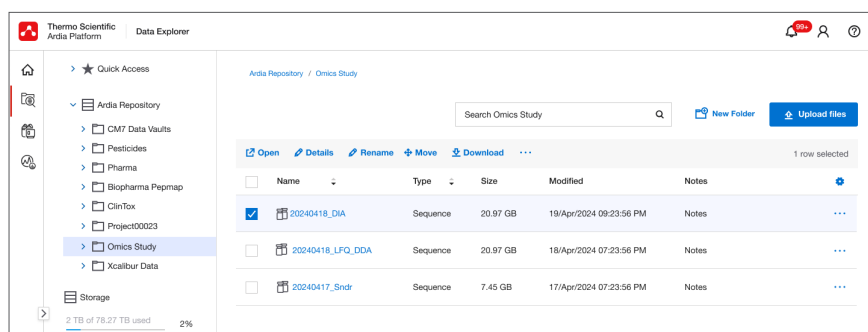
The Ardia Platform offers robust data management capabilities that address these challenges. With automated central data storage, including backup and archival capabilities, and comprehensive access controls, users can securely access, view, and organize information from various applications more effectively.

Centralize your data and enable accessibility and security

Manage

The Ardia Platform provides secure, single-point data management with automated transfer of data and results from Thermo Scientific™ Chromeleon™ Chromatography Data System, Xcalibur™, Compound Discoverer™, Proteome Discoverer™, and BioPharma Finder™ software, as well as third-party application data via the Ardia Platform's Data Sync functionality.

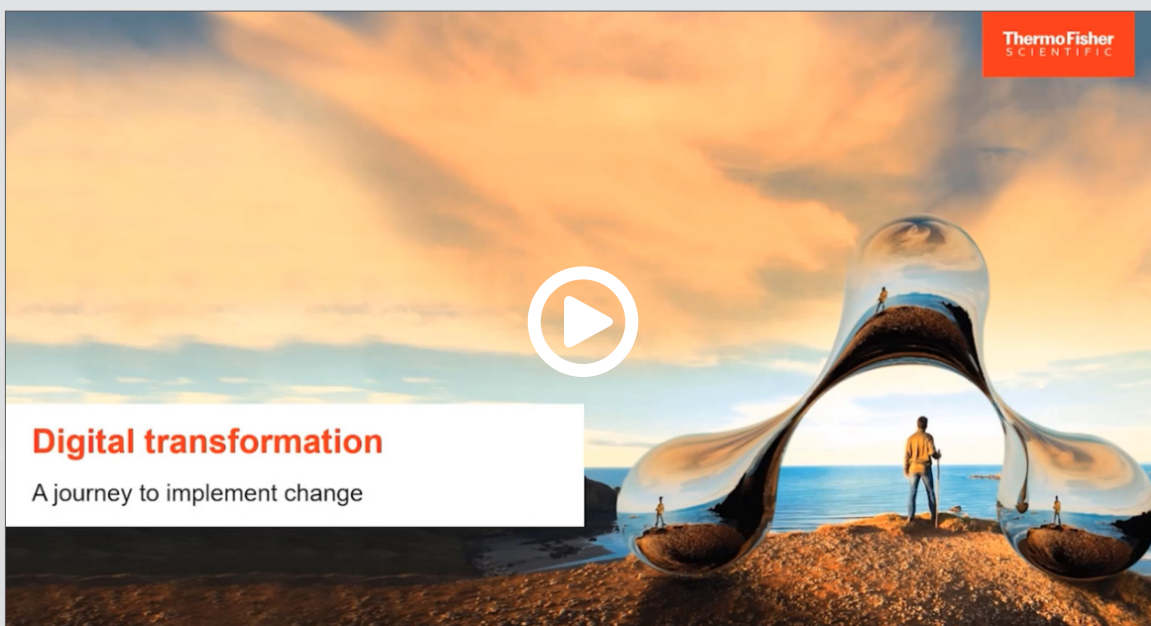
With single-point data storage, users can enhance data accessibility, improve data organization and discovery, and reduce or eliminate data duplication.



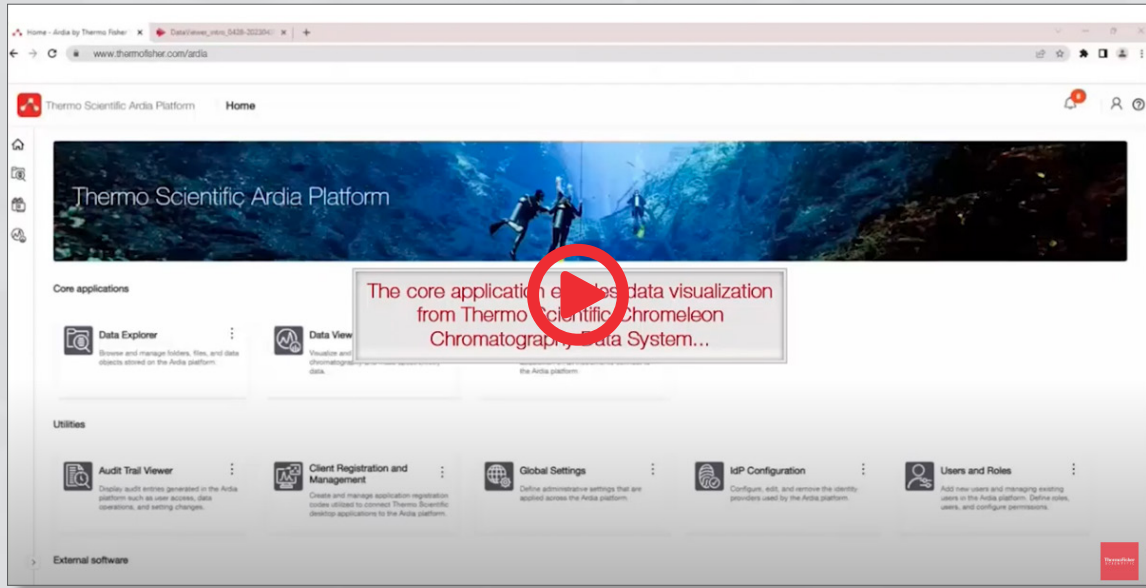
Secure

Keep data secure and controlled with user login access, system-generated audit trails, and embedded user and data management tools, customizable to your organization's specific needs. Streamline your operations and ensure disaster resilience through built-in capabilities, such as tracking actions and simplifying data backup and archiving.

Webinar: Take control of your data and instruments



Video: Ardia Platform's Data Viewer



Review

The intuitive, web-based Ardia Platform's Data Viewer tool provides a single location for review of chromatography and mass spectrometry data, delivering consistency across software products integrated with the Ardia Platform.

With a new user interface, it's easy to display chromatograms and spectra, quickly create extracted ion chromatograms, perform peak integration, export spectral data to the [mzCloud™](#) library for easy compound annotation, and view diagnostic channels like pump pressure for troubleshooting.

Expedite data review with user-friendly features that include the ability to import a mass list, export plots in .svg format for high-resolution visualizations, and quickly display linked data-dependent acquisitions.



Instrument management

Managing a set of individual instruments is often a manual, time-consuming task.

Bringing them together in one place, the Ardia Platform's Instrument application enables monitoring and management of all connected instruments to maximize utilization and eliminate paper records.

This can significantly improve productivity by minimizing downtime, reducing delays, and improving lab efficiency.

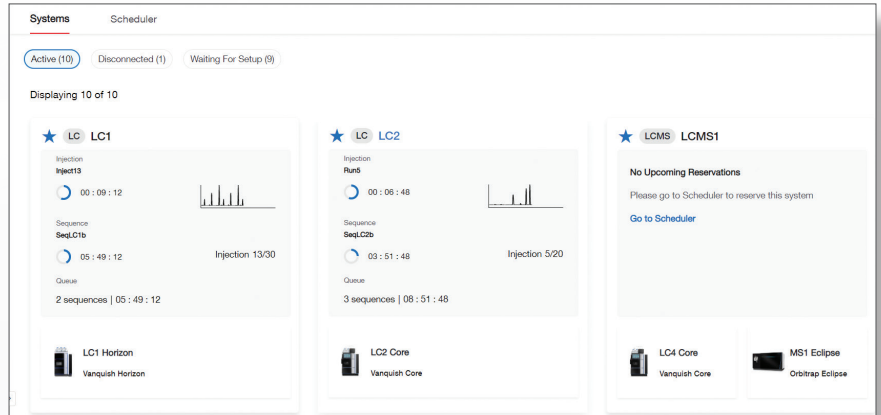
Product spotlight: Instrument management with the Ardia Platform

[Download now >](#)

Effective instrument management to drive laboratory productivity

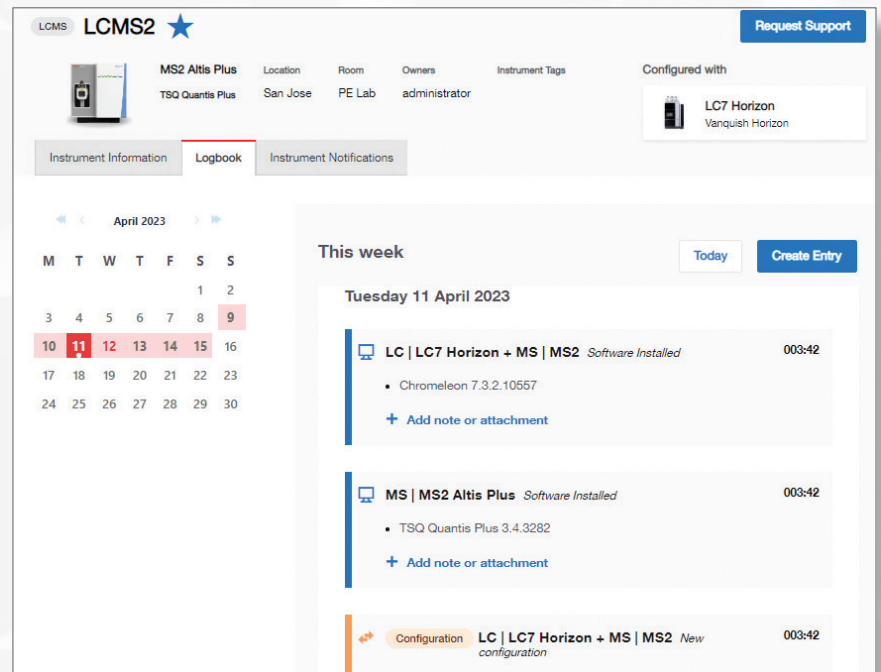
Monitor

Easily view all connected systems from a central location with instrument cards providing real-time status and data acquisition information for a holistic laboratory view to enable fast, informed decisions.



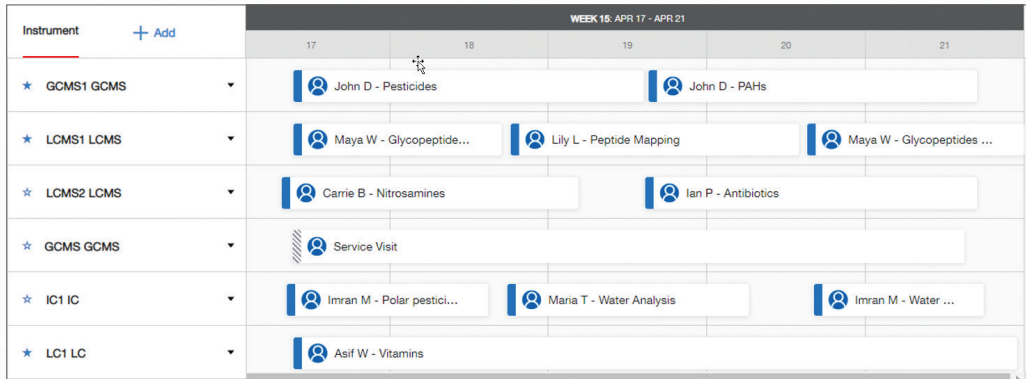
Record

Digitize, standardize, and centralize instrument logbooks with automated event logging, plus manual entry tools to record maintenance activities, custom notes, and images. Automatic tracking of instrument module movements between systems assists laboratories in maintaining accurate and complete records, helping to ensure instruments are controlled and working properly, instilling confidence in result reliability. Instrument support is accelerated via in-app service ticket and support package generation for immediate delivery to Thermo Fisher Scientific technical support.



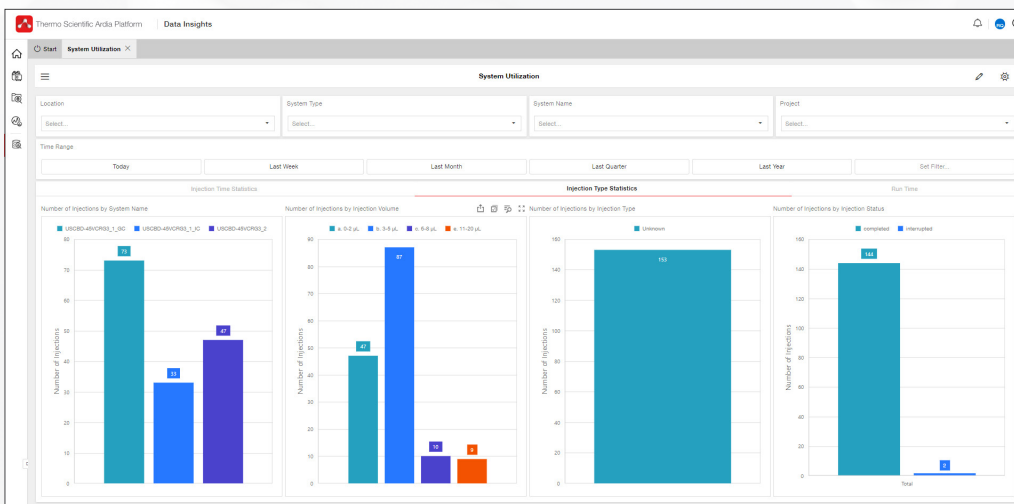
Schedule

Increase laboratory efficiency by optimizing instrument utilization. The Ardia Platform's Instruments Scheduler tool provides a single point to plan work, view system availability, reserve time, and set maintenance windows on all connected instruments to minimize downtime.



Utilize

The Ardia Platform's Data Insights application provides out-of-the-box dashboards for key laboratory insights on resource availability, instrument status, and instrument performance in a centralized location. Track and monitor system metrics such as injection quantity, time, volume, type or status, and % utilization across systems and geographical locations. With interactive dashboards that can be filtered by system, system type, location, project, or time, you can easily focus on the metrics that matter most.



 Learn more at thermofisher.com/ardia

thermo scientific