

Thermo

EASY-nLC 1200

User Guide for LC Devices

60053-97273 Revision B December 2019



Thermo
SCIENTIFIC

© 2019 Thermo Fisher Scientific Inc. All rights reserved.

AFC, EASY-nLC, EASY-Column, EASY-Spray, Foundation, LC TriPlus, and Q Exactive are trademarks, and Orbitrap, Orbitrap Fusion, Thermo Scientific, and Xcalibur are registered trademarks of Thermo Fisher Scientific Inc. in the United States.

The following are registered trademarks in the United States: Advion and RePlay are registered trademarks of Advion BioSystems, Inc. and Waters is a registered trademark of Waters Corporation.

The following are registered trademarks in the United States and other countries: Microsoft and Windows are registered trademarks of the Microsoft Corporation. McAfee and VirusScan are registered trademarks of McAfee, Inc.

All other trademarks are the property of Thermo Fisher Scientific and its subsidiaries.

Thermo Fisher Scientific Inc. provides this document to its customers with a product purchase to use in the product operation. This document is copyright protected and any reproduction of the whole or any part of this document is strictly prohibited, except with the written authorization of Thermo Fisher Scientific Inc.

The contents of this document are subject to change without notice. All technical information in this document is for reference purposes only. System configurations and specifications in this document supersede all previous information received by the purchaser.

This document is not part of any sales contract between Thermo Fisher Scientific Inc. and a purchaser. This document shall in no way govern or modify any Terms and Conditions of Sale, which Terms and Conditions of Sale shall govern all conflicting information between the two documents.

Release history: Revision B, December 2019

Software version: For the EASY-nLC device driver on LC Devices 3.0 or later, install Foundation platform version 3.0 SP2 or later and the Xcalibur data system version 3.0 or later.

For Research Use Only. Not for use in diagnostic procedures.

Contents

	Preface	v
	Related Documentation	vi
	System Requirements	vii
	Data System Computer Settings	viii
	Cautions and Special Notices	ix
	Contacting Us	x
Chapter 1	Installing the EASY-nLC Control Software	1
	Checking the System Prerequisites	1
	Removing a Previous Version of the Instrument Control Software	2
	Installing the Current Version of the Instrument Control Software	3
	Excluding the EASY-nLC from the VirusScan Enterprise	4
Chapter 2	Setting Up the Foundation Instrument Configuration	7
	Connecting the EASY-nLC Instrument to the Data System Computer	7
	Adding the System Devices to the Instrument Configuration	8
	Setting Up the EASY-nLC Configuration	9
	Setting Up the Sample Layout and Start Position	15
Chapter 3	Modifying the HPLC Properties and Controlling Other Devices	17
	Accessing the Devices Page of the Touch-screen Application	17
	Adding the EASY-Spray Device to the Devices List	18
	Modifying the HPLC Properties	20
Chapter 4	Creating Xcalibur Instrument Methods	23
	Setting Up the EASY-nLC Instrument Method Parameters	23
	Sample Pickup and Loading Page	25
	Gradient Page	27
	Pre-Column and Analytical Column Page	30
	Autosampler Page	33
	EASY-Spray Page	36
	Saving Instrument Methods	38
Chapter 5	Creating and Running Sequences	39
	Creating Sequences	39

Contents

	Setting Up the Injection Positions with the Sample Position Selector	43
	Running Sequences	46
	Taking Corrective Action for Run-Time Errors.	48
Chapter 6	Viewing the Run Status in the Information View	49
	Index	51

Preface

This guide describes how to configure the Thermo EASY-nLC™ virtual instrument (VI) control software from the Thermo Foundation™ platform, set up the liquid chromatography (LC) parameters for LC/MS instrument methods in the Instrument Setup window of the Thermo Xcalibur™ data system, and set up the sample position settings and injection volumes for an injection sequence from the Sequence Setup view in the Xcalibur data system.

IMPORTANT To establish communication with the EASY-nLC instrument and to avoid the premature termination of data acquisition during sequence runs, set up the data system computer as described in “Data System Computer Settings” on page viii.

Contents

- [Related Documentation](#)
- [System Requirements](#)
- [Data System Computer Settings](#)
- [Cautions and Special Notices](#)
- [Contacting Us](#)

v To suggest changes to the documentation or to the Help

Fill out a reader survey online at www.surveymonkey.com/s/PQM6P62.
Thank you in advance for your help.

Related Documentation

Thermo Fisher Scientific provides these manuals as PDF files on the data system computer and on the USB flash drive that ships with the EASY-nLC instrument:

- *EASY-nLC 1200 Preinstallation Requirements Guide*
- *EASY-nLC 1200 Getting Started Guide* (using the stand-alone, touch-screen application)
- *EASY-nLC 1200 Troubleshooting and Maintenance Guide*
- *EASY-nLC 1200 User Guide for the Xcalibur Data System*

The data system also provides Help for the EASY-nLC virtual instrument control software.

v **To access the EASY-nLC manuals on the data system computer**

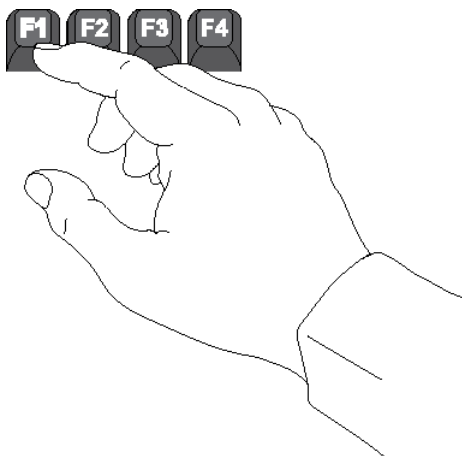
Choose **Start > Programs** (or **All Programs**) > **Thermo Instruments > Manuals > LC Devices > Thermo**.

v **To open the Help from the EASY-nLC view of the Instrument Setup window**

- To open the Welcome page of the Thermo EASY-nLC Help, choose **Help > Thermo EASY-nLC Help** from the menu bar.
- To open the Help topic for the current page of the Thermo EASY-nLC view, do one of the following:
 - Choose **Help > Help On Current Item F1** from the menu bar.
 - Press the F1 key on the computer keyboard.

v **To open the Help from the Thermo EASY-nLC Configuration dialog box of the Foundation Instrument Configuration window**

Press the F1 key on the computer keyboard.



System Requirements

Table 1 lists the data system computer hardware and software requirements for the EASY-nLC VI control software (device driver). This device driver is provided on the LC Devices DVD and is designed for use with the Xcalibur data system or an equivalent Thermo Scientific™ mass spectrometry application.

IMPORTANT Before you install the device driver provided on the LC Devices DVD, ensure that the data system computer has a compatible version of the Foundation platform as noted in the *Thermo LC Devices x.x.x Release Notes*, where *x.x.x* is the version you want to install. You can find the Release Notes document, which includes the system requirements, on the LC Devices DVD.

Table 1. Data system computer hardware and software requirements

Hardware	Minimum requirements	
Data system computer	<ul style="list-style-type: none"> • 2 GHz processor with 1 GB RAM • DVD-ROM drive • 80 GB hard drive capacity • Display resolution 1280 × 1024 • 2 Network cards • NTFS format 	
Software	Requirements	
Operating system	Microsoft™ Windows™ 7 Professional (64-bit) ^a or Microsoft™ Windows™ 10 (64-bit)	
Microsoft .NET	4.5.1 for Foundation platform 3.1 or later	
Third-party software	Adobe™ Reader™ 9.0 or later	
Thermo Scientific software	LC Devices EASY-nLC device driver	Foundation platform
	3.0 or later	3.0 SP2 or 3.1
Touch-screen application	For information about upgrading the touch-screen application for your EASY-nLC instrument, refer to the <i>EASY-nLC 1200 Troubleshooting and Maintenance Guide</i> or the <i>EASY-nLC 1200 Getting Started Guide</i> .	

^a LC Devices 2.8.0 and later are compatible with Windows 7, 32-bit and 64-bit

Data System Computer Settings

Table 2 lists the computer settings that are required to avoid the premature termination of data acquisition during sequence runs. It also provides the virus scanner setting that is required to establish communication with the EASY-nLC instrument.

IMPORTANT After you install the Thermo EASY-nLC device driver on a Windows 7 computer, exclude the Thermo EASY-nLC software from the Prevent IRC Communication list for the computer's virus scanner (see [“Excluding the EASY-nLC from the VirusScan Enterprise”](#) on page 4).

If you do not exclude the Thermo EASY-nLC software from the Prevent IRC Communication list, the data system computer cannot establish communication with the EASY-nLC instrument.

Table 2. Data system computer settings

Category	Settings
Power saver	<ul style="list-style-type: none"> • Screen saver: None • Hibernate: Not enabled or Never • Turn off hard disk: Never • Turn off monitor: Never
Windows updates	If the data system computer is connected to the Internet, turn off the automatic Windows updates.
Virus scanner	For the Windows 7 operating system, exclude the Thermo EASY-nLC software from the virus scanner.

Cautions and Special Notices

Make sure you follow the cautions and special notices presented in this guide. Cautions and special notices appear in boxes; those concerning safety or possible system damage also have corresponding caution symbols.

This guide uses the following types of cautions and special notices.



CAUTION Highlights hazards to humans, property, or the environment. Each CAUTION notice is accompanied by an appropriate CAUTION symbol.






IMPORTANT Highlights information necessary to prevent damage to software, loss of data, or invalid test results; or might contain information that is critical for optimal performance of the system.

Note Highlights information of general interest.

Tip Highlights helpful information that can make a task easier.

Contacting Us

There are several ways to contact Thermo Fisher Scientific for the information you need. You can use your smartphone to scan a QR code, which opens your email application or browser.

Contact us	Customer Service and Sales	Technical Support
	(U.S.) 1 (800) 532-4752	(U.S.) 1 (800) 532-4752
	(U.S.) 1 (561) 688-8731	(U.S.) 1 (561) 688-8736
	us.customer-support.analyze@thermofisher.com 	us.techsupport.analyze@thermofisher.com 



v **To find global contact information or customize your request**

1. Go to www.thermoscientific.com.
2. Click **Contact Us**, select the **Using/Serviceing a Product** option, and then type the product name.
3. Use the phone number, email address, or online form.



v **To find product support, knowledge bases, and resources**

Go to www.thermoscientific.com/support.

v **To find product information**

Go to www.thermoscientific.com/lc-ms.

Note To provide feedback for this document:

- Send an email message to Technical Publications (techpubs-lcms@thermofisher.com).
- Complete a survey at www.surveymonkey.com/s/PQM6P62.

v **To order consumable and spare parts for the EASY-nLC instrument**

For the EASY-nLC 1200 instrument, go to

www.thermoscientific.com/nanoLCMS

Installing the EASY-nLC Control Software

This chapter describes how to install the EASY-nLC virtual instrument (VI) control software from the LC Devices DVD. It also describes how to ensure communication between the data system computer and the EASY-nLC instrument.

Contents

- [Checking the System Prerequisites](#)
- [Removing a Previous Version of the Instrument Control Software](#)
- [Installing the Current Version of the Instrument Control Software](#)
- [Excluding the EASY-nLC from the VirusScan Enterprise](#)

Checking the System Prerequisites

The LC/MS system consists of the EASY-nLC instrument, a Thermo Scientific mass spectrometer, and a data system computer.

Before installing the EASY-nLC VI control software, do the following:

- Install compatible versions of the Foundation platform and the Xcalibur data system (or equivalent Thermo Scientific data system).
- Ensure that you have administrator rights to install the EASY-nLC VI control software for the Xcalibur data system (or equivalent Thermo Scientific data system).
- Remove any earlier version of the EASY-nLC VI control software from the data system computer (see the next topic, [Removing a Previous Version of the Instrument Control Software](#)).

1 Installing the EASY-nLC Control Software

Removing a Previous Version of the Instrument Control Software

Before or after installing the EASY-nLC VI control software, do the following:

- Connect the EASY-nLC instrument to the data system computer through an Ethernet connection (see [“Connecting the EASY-nLC Instrument to the Data System Computer”](#) on [page 7](#)).
- Connect the EASY-nLC instrument to the Thermo Scientific MS detector with a contact closure cable.

The data system synchronizes the run timing between the LC system and the mass spectrometer through the cable. For information about connecting the contact closure cable, refer to the *EASY-nLC 1200 Getting Started Guide*.

- Check the laboratory local area network (LAN) port for Internet access to the remote support server. For remote diagnostics, the laboratory must have a LAN port with Internet access.

The network firewall must allow outgoing Transmission Control Protocol/Internet Protocol (TCP/IP) traffic from the EASY-nLC instrument to the remote support server at IP address 46.226.219.10, port 22.

After installing the EASY-nLC VI control software, exclude the software from the virus scanner as described in [“Excluding the EASY-nLC from the VirusScan Enterprise”](#) on [page 4](#).

Removing a Previous Version of the Instrument Control Software

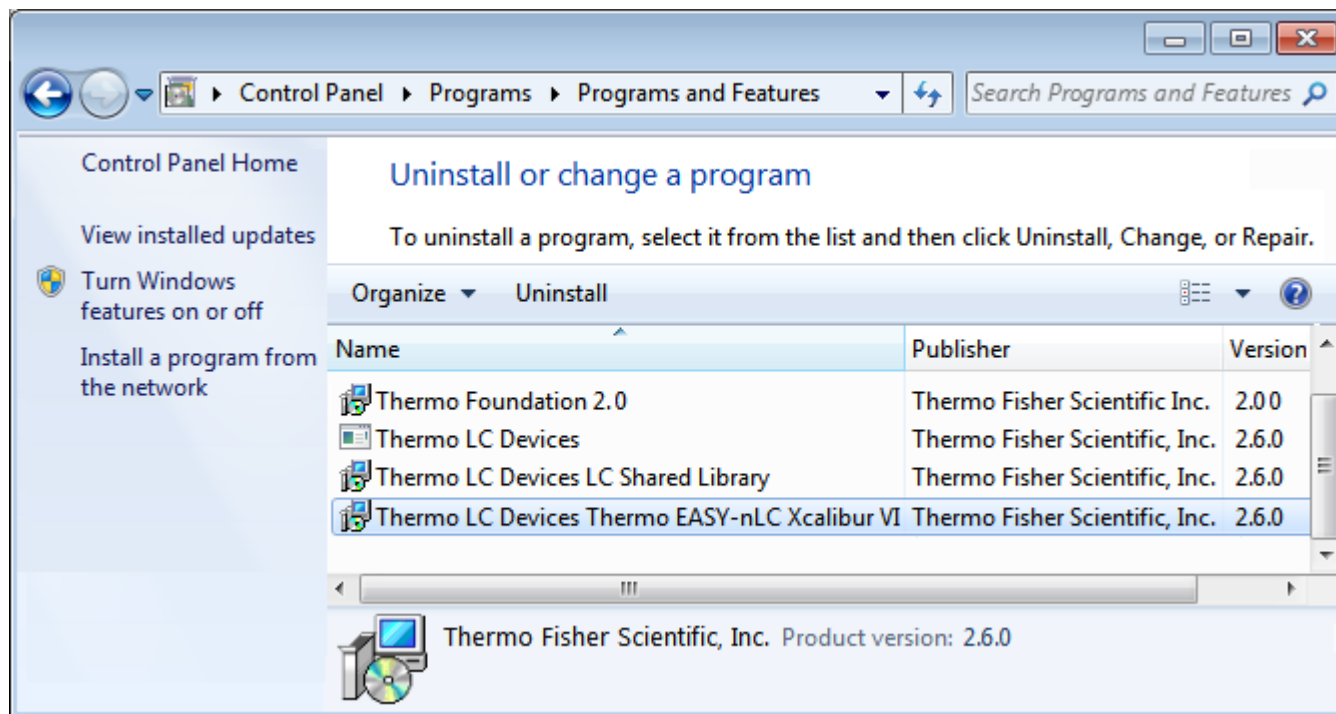
If an older version of the instrument control software is installed on the data system computer, you must uninstall it from the Control Panel.

v To remove a previously installed version of the EASY-nLC Xcalibur VI

1. From the Windows 7 desktop, choose **Control Panel > Uninstall a Program**.

The list of installed programs appears (see [Figure 1](#)).

Figure 1. Uninstall window for the Windows 7 operating system



2. Double-click **Thermo LC Devices Thermo EASY-nLC Xcalibur VI** and wait for the program to be removed from the list.

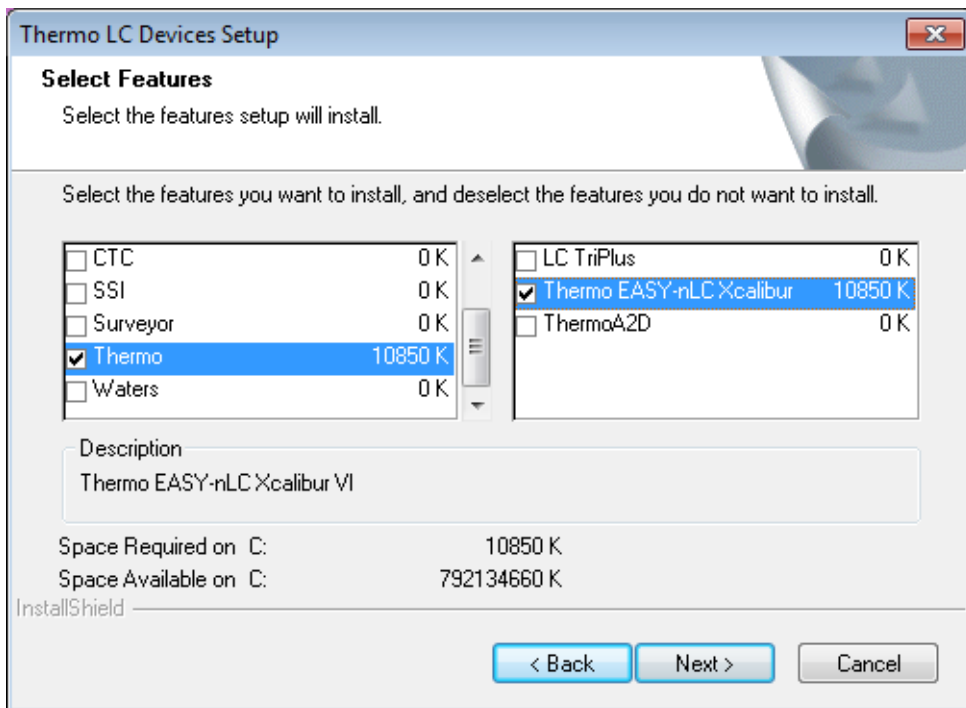
Installing the Current Version of the Instrument Control Software

The EASY-nLC VI control software provided with LC Devices 3.0 or later controls the EASY-nLC instrument (with touch-screen software version 3.2 or later) and the column heater of the optional EASY-Spray ion source.

v To install the EASY-nLC Virtual Instrument (VI) software

1. Check the installed versions of the Foundation platform and the Xcalibur data system and make sure that these versions are compatible with the LC Devices version that you are installing (see “[System Requirements](#)” on [page vii](#)).
2. Close all running programs before starting the installation.
3. If applicable, remove the previously installed version of the EASY-nLC VI control software (see “[Removing a Previous Version of the Instrument Control Software](#)” on [page 2](#)).
4. Load the LC Devices DVD into the data system computer, and follow the instructions in the Thermo LC Devices InstallShield Wizard.
5. On the Select Features page of the wizard, select the **Thermo** check box on the left, and then select the **Thermo EASY-nLC Xcalibur** check box on the right (see [Figure 2](#)).

Figure 2. Select Features page of the Thermo LC Devices InstallShield Wizard



6. When the installation finishes, restart the data system computer.


The installation is complete when you log back in.

Excluding the EASY-nLC from the VirusScan Enterprise

The McAfee™ VirusScan™ Enterprise software blocks the Thermo EASY-nLC software when the data system computer uses the Windows 7 operating system.

IMPORTANT For the Windows 7 operating system, you must exclude the EASY-nLC VI software from the McAfee blocking list.

v To exclude the EASY-nLC software from the VirusScan Enterprise 8.7.0i software

1. Log in to the data system computer as an administrator.
2. Open the McAfee VirusScan Console application as follows:
 - a. Do one of the following:
 - On the Windows 7 taskbar, right-click the **McAfee** icon, , and choose **Manage Features > VirusScan Enterprise**.
 - or–
 - From the Windows 7 desktop, choose **Start > All Programs > McAfee > VirusScan Console**.

3. In the Task column, right-click **Access Protection** and choose **Properties** from the shortcut menu.

The Access Protection Properties dialog box appears.

4. To open the Rules dialog box, do the following:
 - a. Under Categories, choose **Anti-virus Standard Protection**.
 - b. Under Rules, select **Prevent IRC Communication**.
 - c. Click **Edit**.

The Rules Details dialog box opens.

5. Modify these settings:
 - In the Processes to Include box, delete the asterisk.

Note When the Processes to Include box contains only a single asterisk, the virus scanner prevents IRC communication for all processes.

- In the Processes to Exclude box, type **Thermo***.

Note When the Processes to Exclude box contains the text Thermo*, the Access Protection service for Internet Relay Chat (IRC) communication processes ignores processes that begin with Thermo.

6. Click **OK** to close the Rules Details dialog box.
7. Click **OK** to accept the new settings and close the Access Protection Properties dialog box.
8. Close the VirusScan Console application.

Setting Up the Foundation Instrument Configuration

This chapter describes how to set up the instrument configuration for the EASY-nLC device driver.

Before you set up the instrument configuration, connect the EASY-nLC instrument to the data system computer, turn on the EASY-nLC instrument, and log in to the instrument as an administrator. Then, use the Thermo EASY-nLC Configuration dialog box of the Thermo Foundation Instrument Configuration window to set up and test the network connection for the EASY-nLC instrument, to specify the tray type that you plan to use, and to identify the mobile phase solvents in solvent reservoir bottles A and B.

Contents

- [Connecting the EASY-nLC Instrument to the Data System Computer](#)
- [Adding the System Devices to the Instrument Configuration](#)
- [Setting Up the EASY-nLC Configuration](#)
- [Setting Up the Sample Layout and Start Position](#)

Connecting the EASY-nLC Instrument to the Data System Computer

The EASY-nLC instrument and the Thermo Scientific mass spectrometer communicate with the data system computer through an Ethernet connection routed through an Ethernet switch connected to the data system computer.

These are the default IP addresses of the data system computer and the EASY-nLC instrument:

Table 3. Default IP addresses for the LC system

System module	IP address
Data system computer	172.16.0.101
EASY-nLC instrument	172.16.0.103

v **To connect the EASY-nLC instrument to the data system computer**

1. Connect a shielded Ethernet cable to the LAN port on the back panel of the EASY-nLC instrument.
2. Connect the other end of the Ethernet cable to an Ethernet switch.
3. Using a second shielded Ethernet cable, connect the Ethernet switch to the appropriate network card installed in the data system computer.

2 Setting Up the Foundation Instrument Configuration

Adding the System Devices to the Instrument Configuration

For more information about setting up the communication cables, refer to the *EASY-nLC Series Getting Started Guide*.

IMPORTANT Avoid IP conflicts with other units on the network, especially the mass spectrometer.

Adding the System Devices to the Instrument Configuration

Your Thermo Scientific LC/MS system consists of a Thermo Scientific mass spectrometer and an EASY-nLC instrument. To control these instruments from the Xcalibur data system, you must add the installed device drivers to the instrument configuration.

Note The Xcalibur data system and the Foundation Instrument Configuration window cannot be open simultaneously.

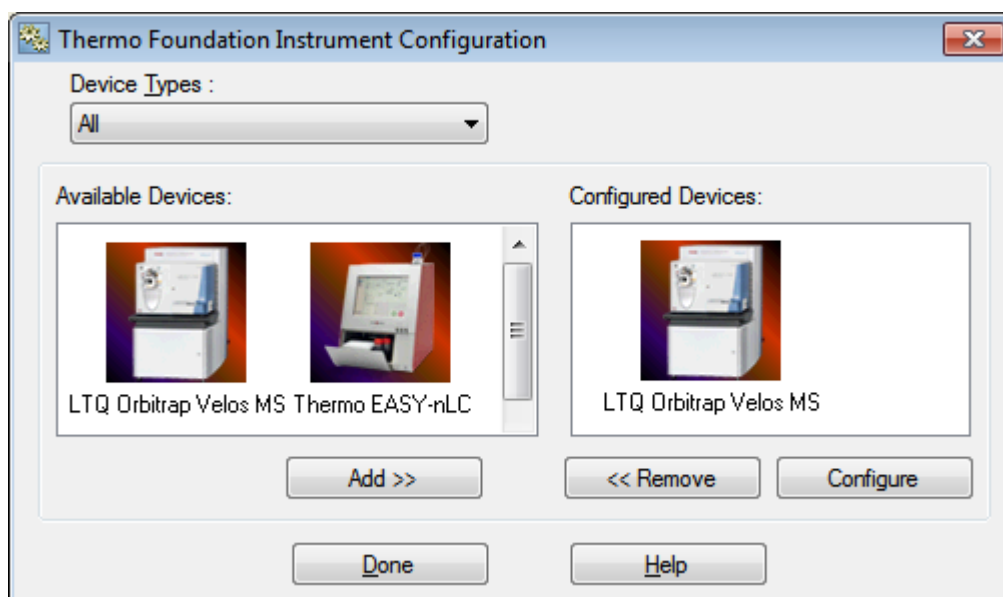
v To add devices to the instrument configuration

1. Close the Xcalibur data system if it is open.
2. From the Windows taskbar, choose **Start > Programs (or All Programs) > Thermo Foundation x.x > Instrument Configuration**, where *x.x* is the installed version of the Foundation platform.

The Thermo Foundation Instrument Configuration window opens (see [Figure 3](#)). The installed devices are listed in the Available Devices list. The configured devices are listed in the Configured Devices list.

[Figure 3](#) shows an instrument configuration with a mass spectrometer added to the Configured Devices list.

Figure 3. Thermo Foundation Instrument Configuration window



Tip To access Help, press F1 or click **Help**.

3. Add the EASY-nLC instrument to the instrument configuration as follows:

a. Make sure that the Device Types list is set to **All** or **AS** (Autosampler).

If the Device Type list is set to LC, the EASY-nLC VI for Xcalibur device does not appear in the Available Devices list.

b. In the Available Devices list, double-click the **Thermo EASY-nLC** icon.

A copy of the Thermo EASY-nLC icon appears in the Configured Devices list.

4. Set up the configuration options for each configured device.

For information about the EASY-nLC configuration parameters, see the next topic, [“Setting Up the EASY-nLC Configuration.”](#)

5. Click **Done** to close the Thermo Foundation Instrument Configuration window.

Tip You must close the Instrument Configuration window before you open the Xcalibur data system. The two applications cannot be open at the same time.

Setting Up the EASY-nLC Configuration

Use the Thermo EASY-nLC Configuration dialog box to set up and test the communication connection to the data system computer, specify the autosampler model and the plate type that you are using, and identify the mobile phase solvents. Clicking Edit in the Autosampler Configuration area ([Figure 5](#)) opens the Sample Position Selector dialog box where you set up the sample layout (row first or column first) and the start position for an Xcalibur injection sequence.

v To set up the EASY-nLC configuration in the Foundation platform

1. If you have not already added the EASY-nLC instrument to the Configured Devices list of the Thermo Foundation Instrument Configuration window, add it as described in [“Adding the System Devices to the Instrument Configuration”](#) on [page 8](#) and leave the Instrument Configuration window open.

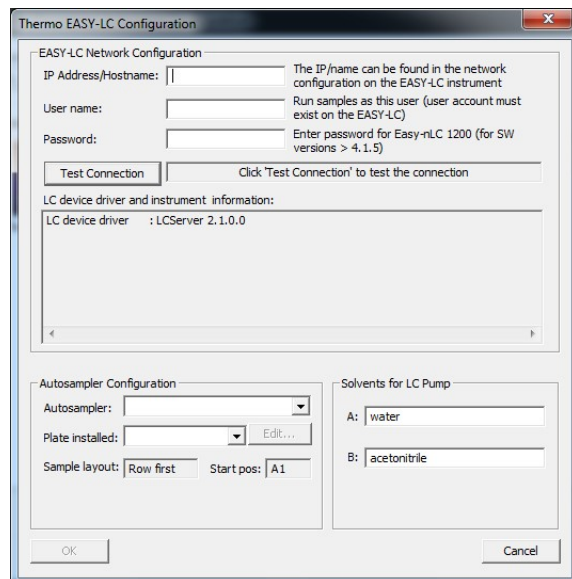
2. In the Configured Devices list, double-click the **Thermo EASY-nLC** icon.

The Thermo EASY-nLC Configuration dialog box opens (see [Figure 4](#)).

2 Setting Up the Foundation Instrument Configuration

Setting Up the EASY-nLC Configuration

Figure 4. Thermo EASY-nLC Configuration dialog box



3. Ensure the following:

- The EASY-nLC instrument is connected to the data system computer by way of an Ethernet switch (see [“To connect the EASY-nLC instrument to the data system computer”](#) on page 7).
- The EASY-nLC instrument is turned on, and you are logged in as an administrator to the instrument.

4. Set up the network configuration for the EASY-nLC instrument as follows:

- a. Type the IP address of the EASY-nLC instrument, your user name and the password in the appropriate boxes.

You need an account in the EASY-nLC touch-screen application with the same user name.

Tip The EASY-nLC IP address is listed in the About box, which you can open by pressing the THERMO logo in the upper left corner of the touch screen. The current user is listed in the lower left corner of the touch screen.

If necessary, change the IP address on the Configuration > Network page of the touch-screen application.

- b. Click **Test Connection** to test the connection to the EASY-nLC instrument and to download the instrument configuration information to the data system computer.
5. Check the message in the status box to the right of the Test Connection button.
- If the connection is established, the status box changes to green (see [Figure 5](#)) and the information about the LC device driver and instrument appears.

- If a connection is not established, the status bar changes to red. Check the Ethernet cable connections, the IP address of the EASY-nLC instrument, and the IP address of the network card installed in the data system computer (see [“Connecting the EASY-nLC Instrument to the Data System Computer”](#) on page 7).
- If an antivirus program or firewall blocks the connection, the application displays this error message:

An established connection was aborted by the software in your host machine.

Contact your local IT administrator for assistance.

For information about excluding the EASY-nLC software from the McAfee virus scanner, see [“Excluding the EASY-nLC from the VirusScan Enterprise”](#) on page 4.

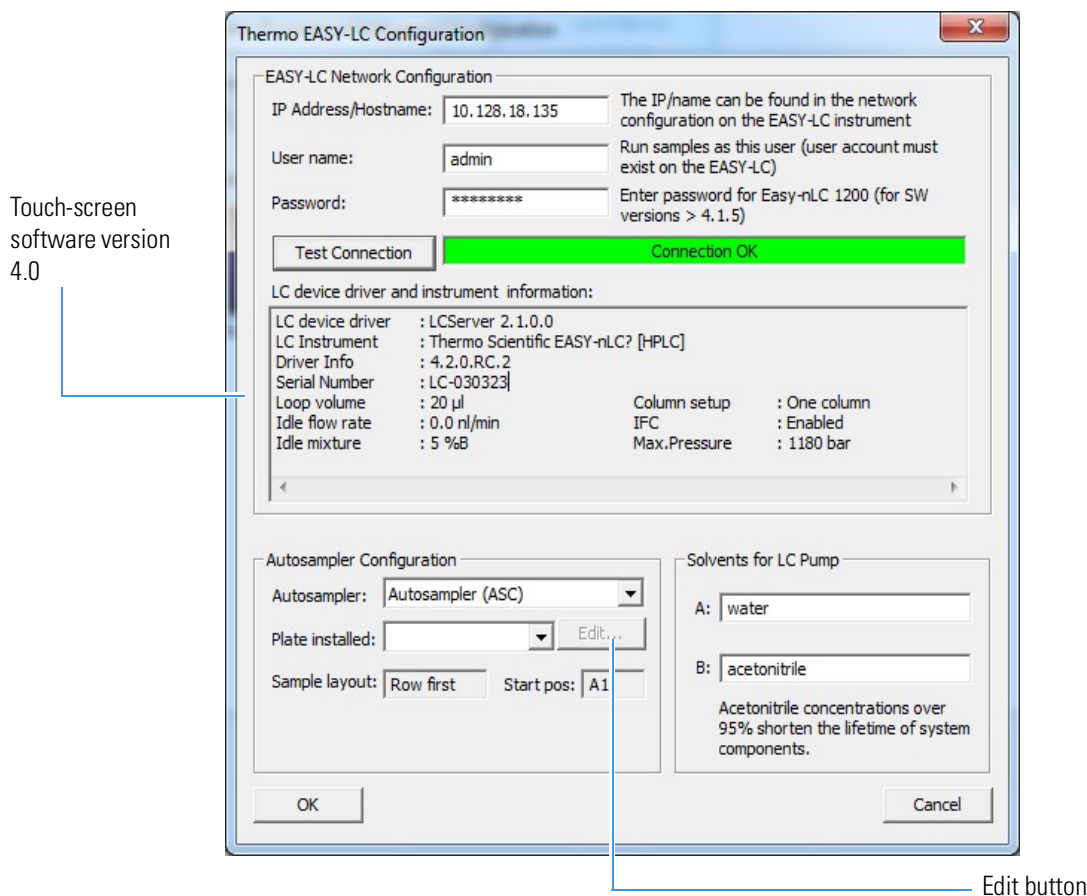
6. Check the instrument information. If necessary, change the instrument information as described in [“Modifying the HPLC Properties”](#) on page 20.
7. Set up the autosampler configuration in the Autosampler Configuration area as follows:
 - a. Select the autosampler model (**Autosampler ASC**).
 - b. Select the plate type (**96-** or **384-well plates**, or a **6 × 8 (ASC)** vial holder).

Note All plate formats for the ASC model have six extra vial positions on the side. When you set up an Xcalibur sequence, these vials are numbered 1-V1 to 1-V6.

2 Setting Up the Foundation Instrument Configuration

Setting Up the EASY-nLC Configuration

Figure 5. Thermo EASY-nLC Configuration dialog box



- c. (Optional) Set up the default sample layout and start position to be used when creating a new Xcalibur sequence as described in “[Setting Up the Sample Layout and Start Position](#)” on [page 15](#).
8. In the Solvents for LC Pump area, type the names of the solvents in the boxes for solvent bottles A and B.

Solvent bottle A typically contains LC/MS-grade water with 0.1% formic acid. Solvent bottle B typically contains LC/MS-grade acetonitrile with 0.1% formic acid (max. 95% acetonitrile).
9. If the OK button is unavailable, click **Test Connection** to download the new configuration settings to the data system computer.
10. Click **OK** to accept the settings and close the Thermo EASY-nLC Configuration dialog box.
11. Click **Done** to close the Thermo Foundation Instrument Configuration window.

You must close the Foundation application before opening the Xcalibur data system. The Xcalibur data system and the Thermo Foundation Instrument Configuration window cannot be open at the same time.

When you establish a connection between the EASY-nLC instrument and the data system computer, this dialog box displays the user-specified loop volume, idle flow rate, idle mixture, and column setup. You set these parameters from the EASY-nLC touch-screen application as described above in “[Modifying the HPLC Properties](#)” on page 20.

[Table 4](#) describes the parameters in the Thermo EASY-nLC Configuration dialog box.

Table 4. EASY-nLC Configuration dialog box parameters (Sheet 1 of 2)

Parameter	Description
EASY-nLC Network Configuration	
Use this area to specify the IP address for the EASY-nLC instrument.	
IP Address/Hostname	Specifies the IP address of the EASY-nLC instrument. This value must match the value stored by the instrument. Tip To check the IP address and host name stored by the instrument, press the company logo in the upper left corner of the EASY-nLC touch screen.
User Name	Specifies the user name. Note The user name that you type in this box must match the user name for the person currently logged in to the instrument. The user name is listed in the lower left corner of the EASY-nLC touch screen. For information about logging in to the EASY-nLC instrument, refer to the <i>EASY-nLC Series Getting Started Guide</i> .
Test Connection button	Tests the Ethernet connection between the data system computer and the EASY-nLC instrument. If the connection is established, the status box to the right of the button turns green and contains this message: Connection OK. In addition, information for the LC device driver and instrument appears in the box below the status bar. IMPORTANT If the following message appears, exclude the Thermo EASY-nLC software from the McAfee virus scanner as described in “ Excluding the EASY-nLC from the VirusScan Enterprise ” on page 4. An established connection was aborted by the software in your host machine. Contact your local IT administrator for assistance.

2 Setting Up the Foundation Instrument Configuration

Setting Up the EASY-nLC Configuration

Table 4. EASY-nLC Configuration dialog box parameters (Sheet 2 of 2)

Parameter	Description
LC Device Driver and Instrument Information	
LC Device Driver	Displays the LC device driver version.
LC Instrument	Displays the instrument type.
Driver Info	Displays the instrument's touch-screen software version.
Serial Number	Displays the serial number that is listed on the instrument's back panel.
Loop Volume	Displays the user-specified loop volume stored by the EASY-nLC instrument.
Idle Flow Rate	Displays the user-specified idle flow rate that the instrument maintains at the end of an injection sequence. Entering a value of 0 deactivates this feature.
	Tip Maintaining long-term emitter stability (with glass emitters) might require a constant solvent flow through the system.
Idle Mixture	Displays the user-specified solvent composition (%B) that the instrument is to pump through the system at the end of an injection sequence.
Column Setup	Displays the user-specified selection. Displays One Column or Two Column.
IFC	Displays whether the intelligent flow control (IFC™) mode is enabled.
Max Pressure	Displays the maximum system pressure.
Autosampler Configuration	
Use this area to select the autosampler type, plate type, sample layout, and initial vial position.	
Autosampler	Specifies the autosampler model: <ul style="list-style-type: none">• ASC—Autosampler with refrigerated compartment and 6 extra vials
Plate Installed	Specifies the plate type: 96 well plate, 384 well plate, or 6 × 8 vial plate.
Sample Layout	Displays the default sample layout (vial or microplate well positions) for an injection sequence.
Start Position	Displays the default initial sample position for an injection sequence.
Edit button	Opens the Sample Position Selector dialog box where you can select the sample layout and initial position for an Xcalibur sequence (see “Setting Up the Sample Layout and Start Position” on page 15).
Solvents for LC Pump	
Use this area to describe the solvents that make up the gradient.	
A	Specifies the solvent in solvent bottle A.
B	Specifies the solvent in solvent bottle B.

Setting Up the Sample Layout and Start Position

When you open the Sample Position Selector dialog box from the Thermo EASY-nLC Configuration dialog box, the Number of Samples to Select box and the Select button are unavailable.

When setting up the configuration options for the EASY-nLC instrument, use the Sample Position Selector dialog box to set up the sample layout and initial vial or microplate well position for an injection sequence.

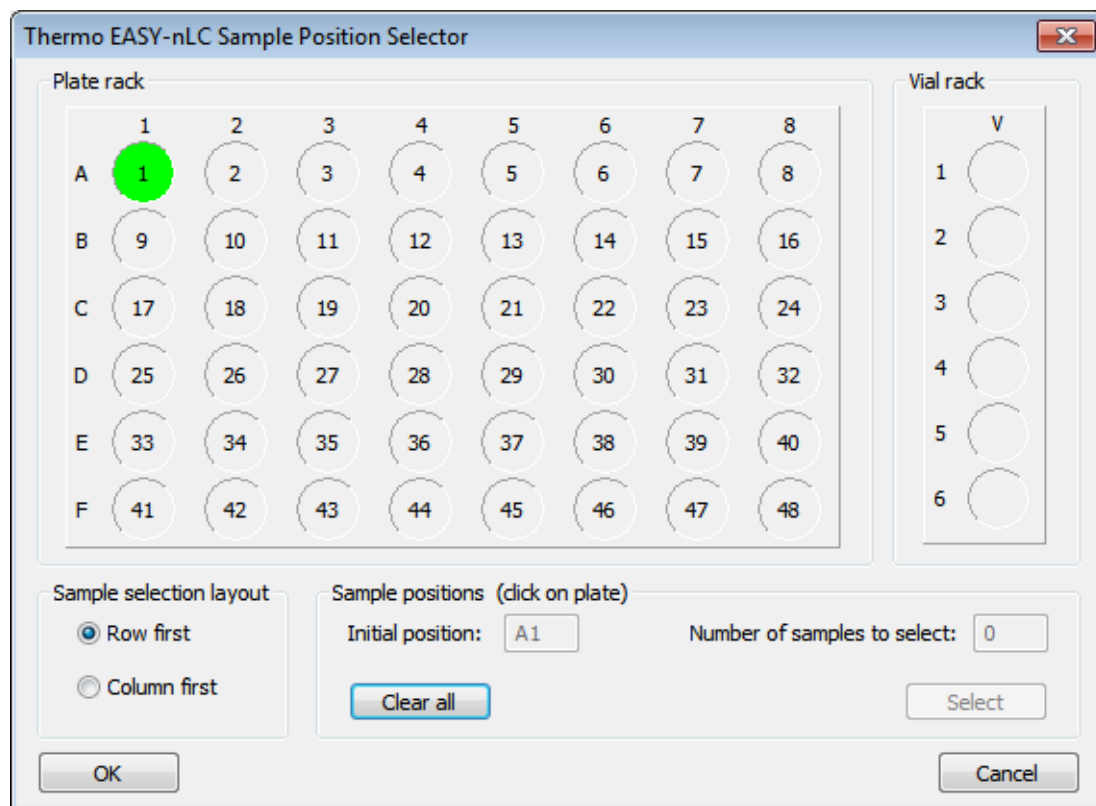
For information about using the Sample Position Selector dialog box to interactively select the vial or microplate well positions for an injection sequence, see [“Setting Up the Injection Positions with the Sample Position Selector”](#) on page 43.

v To set up the sample layout and start position for an Xcalibur injection sequence

1. In the Autosampler Configuration area, click **Edit**.

The Thermo EASY-nLC Sample Position Selector dialog box opens. The Number of Samples to Select box is unavailable (see [Figure 6](#)).

Figure 6. Sample Position Selector dialog box



2. In the Sample Positions area, click **Clear All**.
3. In the Plate Rack area, select the default initial sample position by clicking a position.

2 Setting Up the Foundation Instrument Configuration

Setting Up the Sample Layout and Start Position

4. In the Sample Selection Layout area, select the **Row First** or **Column First** option.
5. Click **OK** to save your changes and close the Thermo EASY-nLC Sample Position Selector dialog box.

Note You can also open the Thermo EASY-nLC Sample Position Selector dialog box by clicking Select Vials in the Samples area of the Xcalibur New Sequence Template dialog box (see [Figure 16](#) on [page 40](#)).

[Table 5](#) describes the parameters in the Sample Position Selector dialog box. When you access this dialog box from the EASY-nLC Configuration dialog box, only the Sample Position Layout and Initial Position parameters are available.

Table 5. Sample Position Selector dialog box parameters

Parameter	Description
Plate Rack	
Use this area to select or clear the sample positions.	
Vial Rack	
For an EASY-nLC instrument with an ASC model autosampler, you can select or clear a sample position from the additional 6 vials.	
Note The additional vials are located on rack 1 and are called 1-V1 to 1-V6.	
Sample Selection Layout	
Row First	When you select the Row First option, the data system fills the sequence table with the sample positions row by row.
Column First	When you select the Column First option, the data system fills the sequence table with the sample positions column by column.
Note The sequence editor ignores the Sample Selection Layout option when you select the vial or well positions by clicking a set of samples in the Plate and Vial Rack areas.	
Sample Positions (click on plate)	
Initial Position	Specifies the first vial or microplate well position in the sequence table.
Number of Samples to Select	Specifies the number of samples to add to the sequence table in addition to the initial vial position.
Clear All button	Clears all of the Plate and Vial Rack entries and the Initial Position entry.
Select button	Sequentially selects the number of vial or well positions specified in the Number of Samples to Select box. The selected vials or wells are highlighted in green in the Plate Rack and Vial Rack areas. The vials or wells are ordered sequentially according to the sample selection layout selection.
Dialog box buttons	
OK	Accepts the settings and closes the dialog box.
Cancel	Closes the dialog box without accepting the changes.

Modifying the HPLC Properties and Controlling Other Devices

This chapter describes how to set up the HPLC properties for the EASY-nLC instrument and how to set up control for the EASY-Spray device from the EASY-nLC instrument's touch-screen application.

Before you can control an external device, such as the EASY-Spray ion source's column heater, you must add the device to the Devices list on the Maintenance > Devices page of the touch-screen application. You also set up the HPLC properties for the EASY-nLC instrument on the Maintenance > Devices page.

Contents

- [Accessing the Devices Page of the Touch-screen Application](#)
- [Adding the EASY-Spray Device to the Devices List](#)
- [Modifying the HPLC Properties](#)

Accessing the Devices Page of the Touch-screen Application

Use the Maintenance > Devices page of the touch-screen application to modify the EASY-nLC instrument's HPLC properties and the add the EASY-Spray ion source's column heater to the list of devices that the EASY-nLC instrument can control.

v To access the Maintenance > Devices page

1. Log in to the EASY-nLC instrument as an administrator. For information about logging into the instrument, refer to the *EASY-nLC Series Getting Started Guide*.

When you log in as an administrator, all five menu tabs on the menu bar at the top of the screen.

2. From the menu bar at the top of the screen, press **Maintenance**.

The vertical tabs on the far left of the screen are Scripts, Log Book, Support, and Devices.

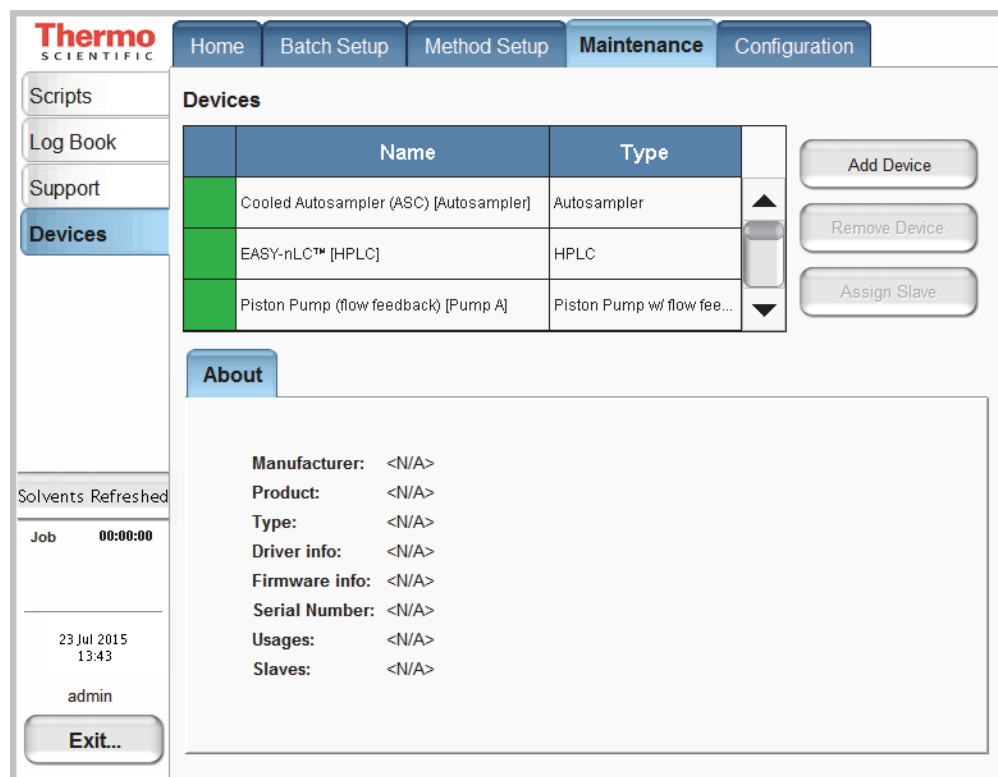
3. In the vertical tabs, press **Devices**.

3 Modifying the HPLC Properties and Controlling Other Devices

Adding the EASY-Spray Device to the Devices List

The Maintenance > Devices page opens (Figure 7).

Figure 7. Maintenance Devices page



Adding the EASY-Spray Device to the Devices List

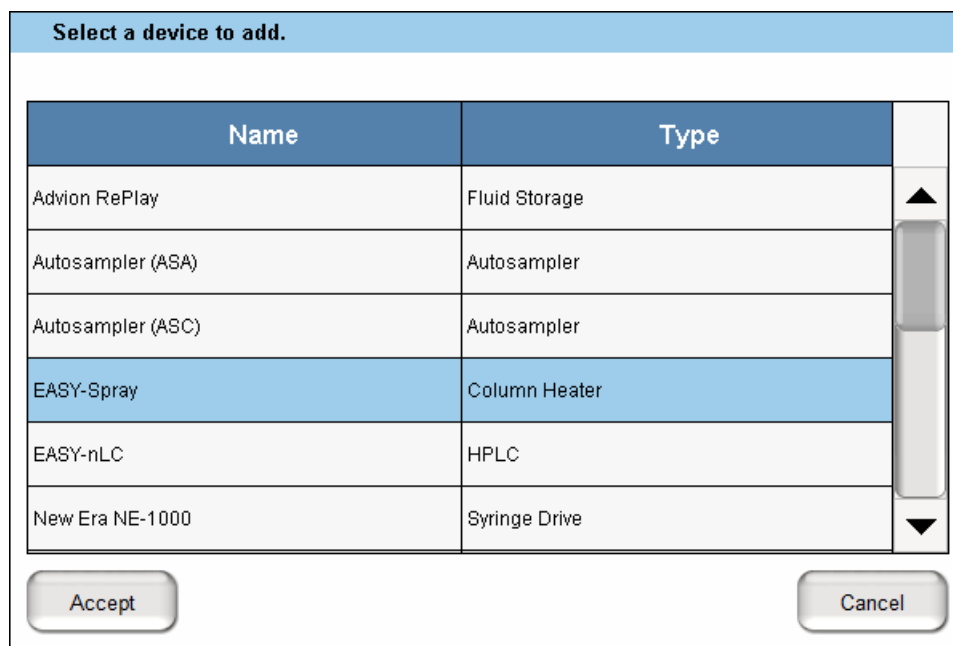
The EASY-nLC instrument can control the EASY-Spray ion source's column temperature.

Note The EASY-Spray ion source connects to the mass spectrometer's ion source interface. The EASY-nLC instrument provides power for the ion source through a P-Bus connection. For information about setting up the EASY-Spray ion source, refer to the *EASY-Spray Series Ion Source User Guide*. For information about connecting the P-Bus cable to the EASY-nLC instrument, refer to the *EASY-nLC 1200 Getting Started Guide*.

v To add the EASY-Spray ion source to the Devices list

1. On the instrument's touch screen, press **Maintenance > Devices** and check that the EASY-Spray device is not already present in the Devices list. For more information about accessing the Maintenance Devices page, see "[Accessing the Devices Page of the Touch-screen Application](#)" on page 17.
2. To add the EASY-Spray device, do the following:
 - a. Press **Add Device**.

The Select a Device to Add dialog box opens (Figure 8).

Figure 8. Select a Device to Add dialog box

- b. Select **EASY-Spray** and press **Accept**.
3. Verify that the Devices list includes the added device.

Selecting the device displays information about the device driver on the About page (Figure 9).

3 Modifying the HPLC Properties and Controlling Other Devices

Modifying the HPLC Properties

Figure 9. About information for the EASY-Spray device

	Name	Type	
	EASY-Spray	Column Heater	▲
	EASY-nLC™ [HPLC]	HPLC	
	Piston Pump (flow feedback) [Pump A]	Piston Pump w/ flow fee...	▼

Add Device

Remove Device

Assign Slave

About

EASY-Spray

Manufacturer: Thermo Scientific
Product: EASY-Spray
Type: Column Heater
Driver info: 0.1.1
Firmware info: devType:3; fwVersion:N/A; serialNumber:1
Serial Number: serialNumber:1
Usages: Column heating
Slaves: <N/A>

Modifying the HPLC Properties

Use the Properties page for the EASY-nLC HPLC device to do the following:

- Enter the loop volume of the sample loop that you are using in the EASY-nLC instrument.
- Set up the solvent system to deliver a low flow of solvent when the instrument is idle.
- Specify the column setup that you are using.
- Turn on the Load Speed Protection feature.
- Turn on the Automatic Pre-run Maintenance feature.

v To modify the device properties

1. From the instrument's touch screen, do the following:
 - a. Open the **Maintenance > Devices** page.
 - b. In the Devices list, select **EASY-nLC (HPLC)**, and then press the **Properties** tab.

The Properties view for the HPLC device on the Maintenance > Devices page opens (Figure 10).

Figure 10. EASY-nLC (HPLC) Properties view

- c. Press the corresponding box to open the keypad and enter the appropriate numeric values for these parameters:
 - For Loop Volume, type the nominal volume of the sample loop installed on valve S (5, 20, or 50 µL).
 - For Idle Flow Rate, type an appropriate value, in nL/min. When idle, the instrument pumps the specified solvent mixture at the specified flow rate.
 - For Idle Mixture %B, type a value from 0 to 100.
 - d. Select or clear these check boxes as appropriate: **One Column Setup**, **Load Speed Protection (LSP)**, and **Automatic Pre-run Maintenance**.

Note These check boxes are available in the following versions of the EASY-nLC touch-screen application:

 - One Column Setup
 - LSP
 - Automatic Pre-run Maintenance
 - e. Click **Apply**.
2. In the EASY-nLC Configuration dialog box of the Foundation Instrument Configuration window, click **Test Connection**. Then verify the new settings.

For information about the EASY-nLC Configuration dialog box, see “[Setting Up the EASY-nLC Configuration](#)” on page 9.

Creating Xcalibur Instrument Methods

This chapter describes how to set up the instrument method parameters for the EASY-nLC instrument.

An Xcalibur instrument method (.meth) contains the chromatographic and data acquisition parameters for your LC/MS system. When creating new instrument methods, set up the parameters for all of the configured devices.

Contents

- [Setting Up the EASY-nLC Instrument Method Parameters](#)
- [Saving Instrument Methods](#)

Note For information about setting up the instrument method parameters for the mass spectrometer, refer to the Help for the mass spectrometer.

Setting Up the EASY-nLC Instrument Method Parameters

Use the Instrument Setup window of the Xcalibur data system to create instrument methods for your LC/MS system. To create an instrument method, enter the data acquisition settings for the mass spectrometer and the injection and chromatographic settings for the LC system.

v To open the Instrument Setup window

From the Xcalibur Home Page, do one of the following:

- Choose **GoTo > Instrument Setup**.

–or–

- Click the **Instrument Setup** icon in the Roadmap view of the Home Page.

The Instrument Setup window opens. The view bar contains icons for the configured devices.

4 Creating Xcalibur Instrument Methods

Setting Up the EASY-nLC Instrument Method Parameters

v To set up the instrument method parameters for the EASY-nLC instrument

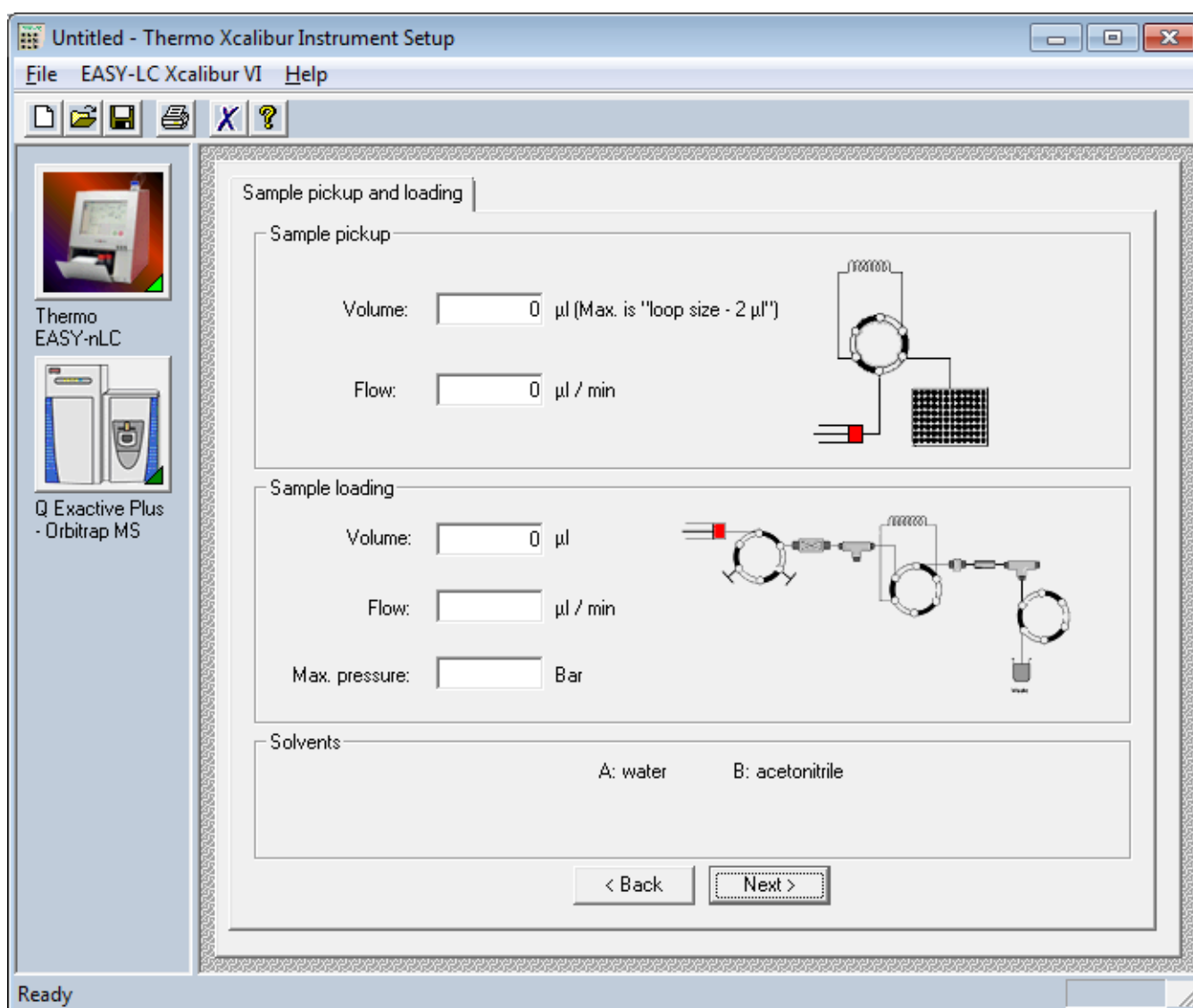
1. In the view bar of the Instrument Setup window, click the **Thermo EASY-nLC** icon.

The EASY-nLC view opens in the Instrument Setup window with the Sample Pickup and Loading page displayed (see [Figure 11](#)). At the bottom of the view, the Solvents area lists the solvents specified in the instrument configuration. To change the names of the mobile phase solvents, see “[Setting Up the EASY-nLC Configuration](#)” on [page 9](#).

2. Enter the appropriate instrument method settings for the EASY-nLC instrument. Click **Next** to open the remaining three pages of the EASY-nLC view page by page.

[Figure 11](#) shows the Sample Pickup and Loading page of the EASY-nLC view.

Figure 11. EASY-nLC view of the Instrument Setup window



For information about the pages of the EASY-nLC view, see these topics:

- [Sample Pickup and Loading Page](#) next topic
- [“Gradient Page”](#) on [page 27](#)
- [“Pre-Column and Analytical Column Page”](#) on [page 30](#)
- [“Autosampler Page”](#) on [page 33](#)
- [“EASY-Spray Page”](#) on [page 36](#)

Sample Pickup and Loading Page

Use the Sample Pickup and Loading page to specify the following:

- The sample volume that the autosampler withdraws (injection volume) from the vial or well position in the Xcalibur injection sequence and the flow rate at which the autosampler draws the sample into the sample loop
- The solvent volume that pump A uses to push the sample out of the sample loop and onto the column assembly and the flow rate and maximum pressure for the sample loading step

v **To open the Sample Pickup and Loading page**

1. Open the EASY-nLC view of the Instrument Setup window.
2. If the Sample Pickup and Loading page is not displayed, click the **Sample Pickup and Loading** tab.

4 Creating Xcalibur Instrument Methods

Setting Up the EASY-nLC Instrument Method Parameters

Table 6 describes the parameters on the Sample Pickup and Loading page of the EASY-nLC view of the Instrument Setup window.

Table 6. Sample Pickup and Loading page parameters

Parameter	Description
Sample Pickup	
Volume (µL)	<p>Specifies the sample volume that the autosampler withdraws from the vial or well position specified in the Xcalibur sequence.</p> <p>Maximum volume = <i>sample loop volume</i> – 2 µL</p> <p>The graphic on the Home > Overview page (touch screen) displays the sample loop size.</p>
Flow (µL/min)	<p>Specifies the flow rate at which pump S draws the sample into the sample loop.</p> <p>Range: 0 to 40 µL/min (The flow must be greater than 0 when the sample pickup volume is greater than 0.)</p> <p>Tip For aqueous sample matrixes, set the flow rate to 20 µL/min.</p>
Sample Loading	
Volume (µL)	<p>Specifies the volume of solvent A that the instrument uses to push the sample out of the sample loop and onto the precolumn (two-column setup) or the analytical column (one-column setup).</p> <p>Typically, two times the sample pickup volume plus 2 µL is sufficient.</p> <p>Range: 0 to 137 µL</p> <p>IMPORTANT The maximum allowable entry is 137 µL; however, for Xcalibur sequence runs, the <i>sample loading volume</i> plus the <i>precolumn equilibration volume</i> plus the <i>analytical column equilibration volume</i> must be less than 120 µL.</p> <p>See “Taking Corrective Action for Run-Time Errors” on page 48.</p>
Flow (µL/min)	<p>Specifies the flow rate at which pump A pumps solvent A through the instrument to push the sample out of the loop and onto the precolumn or analytical column.</p> <p>If the Flow box is empty, the instrument runs at the set pressure.</p> <p>Range: 0 to 100 µL/min</p>
Max Pressure (bar)	<p>Specifies the maximum pressure for the sample loading step.</p> <p>If the Max Pressure box is empty, the instrument runs at the set flow rate.</p> <p>EASY-nLC 1200 range: 0 to 1180 bar</p>
<p>Tip If both the Max Pressure and Flow boxes are empty, the instrument runs at the maximum instrument pressure. Leave these boxes empty if you want the instrument to run at the highest possible flow rate that is allowed under the maximum instrument pressure limit.</p>	

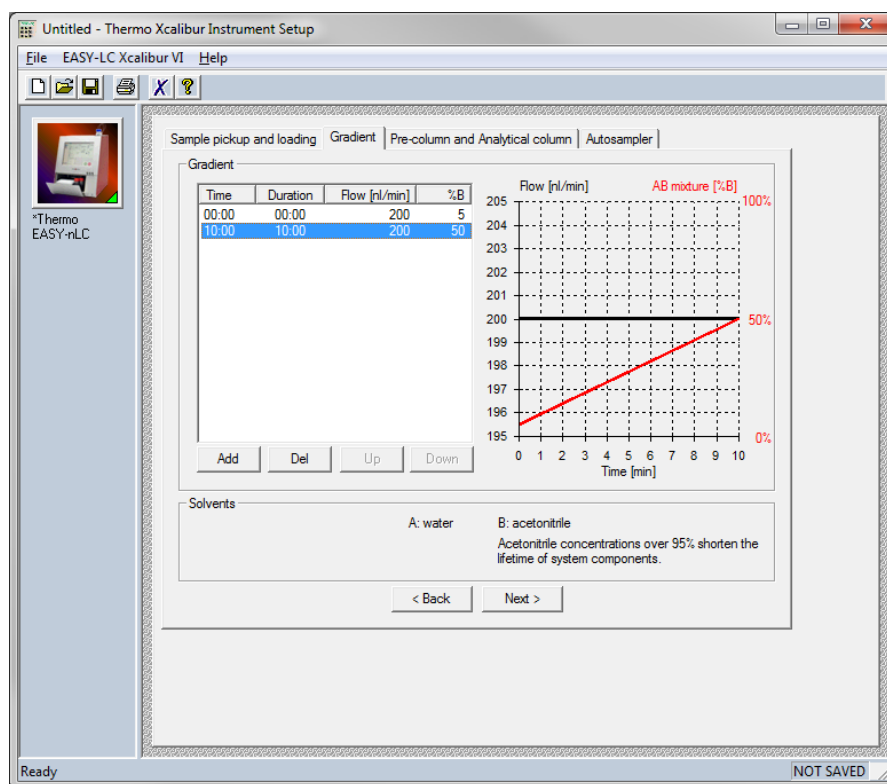
Gradient Page

Use the Gradient page to set up the gradient program (see [Figure 12](#)).

v **To open the Gradient page**

1. Open the EASY-nLC view of the Instrument Setup window.
2. Click the **Gradient** tab. If you do not see the Gradient tab, click **Next**.

Figure 12. Gradient page



v **To set up the gradient program**

1. In the Time = 0.00 row, do the following:
 - In the Flow (nL/min) column, type a value from **1** to **2000**.
 - In the %B column, type a value from **0** to **100**.
2. To add an additional time point (table row), click **Add**.

4 Creating Xcalibur Instrument Methods

Setting Up the EASY-nLC Instrument Method Parameters

3. In rows 2 or higher of the gradient table, do the following:

a. In the Duration column, type a value from **0.01** to **9999.49**.

The value in the Duration column is the length of time that you want the instrument to take to reach the specified flow and %B conditions. When you type a value in the Duration column, the value in the Time column changes to the current Duration value plus the value in the previous row.

b. In the Flow (nL/min) column, type a value from **1** to **2000**.

c. In the %B column, type a value from **0** to **100**.

Both the flow rate and %B composition change linearly between time points.

4. Edit the table as follows:

- To delete a row, select the row and click **Del**.
- To reorder the rows as applicable, select the row and click **Up** or **Down**.

Table 7 describes the parameters on the Gradient page.

Table 7. Gradient page parameters

Parameter	Description
Table	
Time	Specifies the run time when the instrument reaches the conditions specified in the flow and %B columns.
Duration	Specifies the length of time between the previous and current time points. Range: 0.01 to 9999.59 min
Flow (nL/min)	Specifies the mobile phase flow rate for the current time point. Range: 1 to 2000 nL/min
%B	Specifies the percent composition of solvent B in the mobile phase for the current time point.
Buttons	
Add	Adds a row to the gradient program.
Del	Deletes the selected row from the gradient program.
Up	Moves the selected row up.
Down	Moves the selected row down.
Graph	
Flow (nL/min)	The y axis on the left side of the graph displays the flow scale. A black line represents the change in flow rate with time.
AB mixture (%B)	The y axis on the right side of the graph displays the percentage of solvent B. A red line represents change in %B with time.
Time (min)	The x axis displays the run time of the gradient program.

Pre-Column and Analytical Column Page

Use the Pre-column and Analytical Column page to set up the column equilibration steps (see [Figure 13](#)).

v **To open the Pre-column and Analytical Column page**

1. Open the EASY-nLC view of the Instrument Setup window.
2. Click the **Pre-column and Analytical Column** tab. If you do not see the Pre-column and Analytical Column tab, click **Next**.

Figure 13. Pre-column and Analytical Column page

Sample pickup and loading | Gradient | Pre-column and Analytical column

Pre-column equilibration

Volume: µl

Flow: µl / min

Max. pressure: Bar

Analytical column equilibration

Volume: µl

Flow: µl / min

Max. pressure: Bar

Solvents

A: water B: acetonitrile

< Back Next >

Table 8 describes the parameters on the Pre-column and Analytical Column page.

Note For information about determining the appropriate flow rate for the precolumn and analytical column equilibration steps, refer to the *EASY-nLC 1200 Getting Started Guide*.

Table 8. Pre-column and Analytical Column page parameters (Sheet 1 of 2)

Parameter	Description
Pre-column Equilibration	
Volume (µL)	<p>Specifies the volume of solvent A that pump A pushes through the precolumn to waste during the precolumn equilibration step.</p> <p>Range: 0 to 137 µL</p> <p>IMPORTANT The maximum allowable entry is 137 µL; however, for Xcalibur sequence runs, the <i>sample loading volume</i> plus the <i>precolumn equilibration volume</i> plus the <i>analytical column equilibration volume</i> must be less than 120 µL.</p>
Flow (µL/min)	<p>Specifies the flow rate for the precolumn equilibration step. If the Flow box is empty, the instrument runs at the set pressure.</p> <p>Range: 0 to 100 µL/min</p>
Max Pressure (bar)	<p>Specifies the maximum pressure for the precolumn equilibration step. If the Max Pressure box is empty, the instrument runs at the set flow rate.</p> <p>EASY-nLC 1200 range: 0 to 1180 bar</p>
<p>Tip If both the Max Pressure and Flow boxes are empty, the instrument runs at the maximum instrument pressure. Leave these boxes empty if you want the instrument to run at the highest possible flow rate that is allowed under the maximum instrument pressure limit.</p>	

4 Creating Xcalibur Instrument Methods

Setting Up the EASY-nLC Instrument Method Parameters

Table 8. Pre-column and Analytical Column page parameters (Sheet 2 of 2)

Parameter	Description
Analytical Column Equilibration	
Volume (µL)	<p>Specifies the volume of solvent A that pump A pushes through the analytical column during the analytical column equilibration step.</p> <p>Range: 0 to 137 µL</p> <p>IMPORTANT The maximum allowable entry is 137 µL; however, for Xcalibur sequence runs, the <i>sample loading volume</i> plus the <i>precolumn equilibration volume</i> plus the <i>analytical column equilibration volume</i> must be less than 120 µL.</p> <p>See “Taking Corrective Action for Run-Time Errors” on page 48.</p>
Flow (µL/min)	<p>Specifies the flow rate for the analytical column equilibration step. If the Flow box is empty, the instrument runs at the set pressure.</p> <p>Range: 0 to 3 µL/min</p>
Max Pressure (bar)	<p>Specifies the maximum pressure for the analytical column equilibration step.</p> <p>EASY-nLC 1200 range: 0 to 1180 bar</p>
<p>Note If both the Max Pressure and Flow boxes are empty, the instrument runs at the maximum instrument pressure. Leave these boxes empty if you want the instrument to run at the highest possible flow rate that is allowed under the maximum instrument pressure limit.</p>	

Autosampler Page

Use the Autosampler page to set up the wash step for the needle and sample loop (Figure 14).

v **To open the Autosampler page**

1. Open the EASY-nLC view of the Instrument Setup window.
2. Click the **Autosampler** tab. If you do not see the Autosampler tab, click **Next** until the tab appears.

Figure 14. Autosampler page

Sample pickup and loading | Gradient | Pre-column and Analytical column | Autosampler

Auto-sampler wash

Standard

Flush volume: µl

Custom

Step	Source	Volume [µl]	Cycles
------	--------	-------------	--------

Add Del Up Down

Note: Max. vol. is "loop size + 8 µl". Wash bottle is no. 4.

Solvents

A: water B: acetonitrile

< Back Next >

v **To set up the standard autosampler wash step**

1. Select the **Standard** option.
2. In the Flush Volume (µL) box, type the volume of solvent A (from wash bottle 3) that the autosampler uses to flush the needle and the sample loop.

The range depends on the sample loop size (see Table 9 on page 35).

v To set up a custom wash program

1. Select the **Custom** option.

The custom wash table becomes available.

2. For each row that you want to add to the program, click **Add**.

You can select a different wash solvent for each row.

3. Edit each row as follows:

- In the Source column, select the wash solvent source: **Bottle 1**, **Bottle 2**, or **Bottle 3**.

IMPORTANT The EASY-nLC tray compartment holds up to four wash bottles:

- Bottles 1 and 2 in positions W1 and W2 can contain custom wash solvents.
- Bottle 3 in position W3 must contain solvent A.
- Bottle 4 in position W4 must contain the needle wash insert.

During a custom wash program, the autosampler does the following:

1. Empties the contents of pump S into the needle wash bottle (W4).
2. Performs the steps in the custom wash program. During each cycle, the autosampler draws solvent from the specified bottle and then ejects the solvent into the needle wash bottle (W4).
3. Performs a final wash cycle with a preset volume of solvent A from bottle 3 (W3).
4. Refills pump S with solvent A from bottle 3 (W3) to be ready for the next injection.

- In the Volume (μL) column, type a volume from **0** to the *sample loop size* plus 8 μL .

If you enter a volume that is higher than 58 μL , an Invalid Method Parameter message box appears and the program resets the volume to the maximum allowed.

- In the Cycles column, type a value from **0** to **10**.

Table 9 describes the parameters on the Autosampler page.

Table 9. Autosampler page parameters (Sheet 1 of 2)

Parameter	Description
Standard	
Standard option	Selecting this option enables the standard wash option.
Flush Volume (μL)	Specifies the flush volume that pump S is to push through the sample loop. Range for the 20 μL sample loop: 30.25 to 100.75 μL Range for the 50 μL sample loop: 60.26 to 70.75 μL
Custom	
Custom option	Selecting this option enables the custom wash program. For information about the steps that the autosampler performs during a custom wash program, see “To set up a custom wash program” on page 34.
Custom wash table columns	
Order	Defines the order of the custom wash steps.
Source	Specifies the wash solvent source for the current wash step. Selections: Bottle 1, Bottle 2, or Bottle 3 Note Bottles 1 and 2 contain custom wash solvents. Bottle 3 contains solvent A.
Volume (μL)	Specifies the wash solvent volume for each wash cycle. Maximum entry volume: 58 μL Maximum allowed volume at run time: <i>Sample loop size</i> plus 8 μL Note The method editor of the EASY-nLC VI control software does not know the configured sample loop size. When you submit a sequence with the instrument method, the data system’s acquisition service validates the custom wash volumes against the configured sample loop size. To prevent solvent from being drawn into pump S, the instrument control software limits the volume to the <i>sample loop size</i> plus 8 μL. For information about changing the sample loop size on the Maintenance > Devices page of the touch-screen application, see “Modifying the HPLC Properties” on page 20.
Cycles	Specifies the number of wash cycles for the wash step. Range: 1 to 10 Note For each cycle, the autosampler draws the specified volume of wash solvent from the specified source into the needle and then ejects the wash solvent into wash bottle 4 (W4).

4 Creating Xcalibur Instrument Methods

Setting Up the EASY-nLC Instrument Method Parameters

Table 9. Autosampler page parameters (Sheet 2 of 2)

Parameter	Description
Buttons	
Add	Adds a row to the wash program.
Del	Deletes the selected row from the wash program.
Up	Moves the selected row up.
Down	Moves the selected row down.

EASY-Spray Page

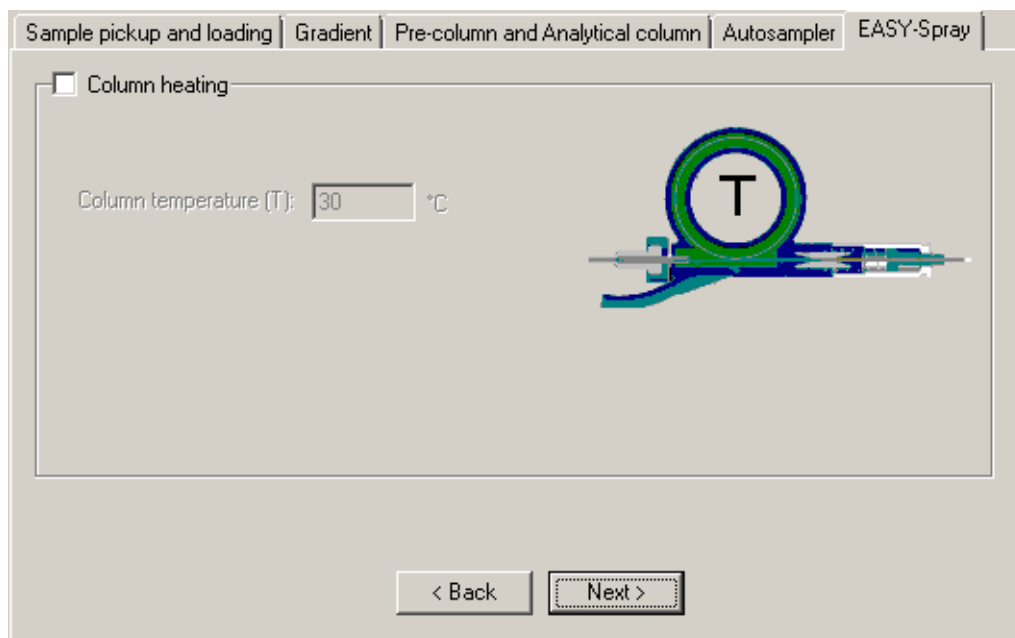
Use the EASY-Spray page to control the temperature of the column heater during a sequence run.

v To open the EASY-Spray page

1. Open the EASY-nLC view of the Instrument Setup window.
2. Click the **EASY-Spray** tab. If you do not see the EASY-Spray tab, click **Next** until the tab appears (Figure 15).

Tip If the Autosampler tab is the last tab, check whether the Device list on the Maintenance > Devices page of the touch-screen application lists the EASY-Spray column heater (see “[Accessing the Devices Page of the Touch-screen Application](#)” on page 17).

Figure 15. EASY-Spray page with the default settings



v **To specify the column heater temperature**

1. On the EASY-Spray page, select the **Column Heating** check box.
2. Type a temperature from **30** to **60** °C.

Tip If you cannot control the column heater temperature, check the following:

- If the temperature readout on the EASY-Spray ion source is blank, make sure that the P-Bus cable is properly connected and that the EASY-nLC instrument is turned on.
- If the temperature readout in the EASY-Spray dialog box (available from the Home > Overview page of the touch-screen application) displays a question mark and the temperature readout on the EASY-Spray ion source displays two vertical bars, make sure that the EASY-Spray column is plugged into the EASY-Spray ion source's Heater port.

For more information about the EASY-Spray ion source, refer to the *EASY-Spray Series Ion Source User Guide*.

Table 9 describes the parameters on the EASY-Spray page.

Table 10. EASY-Spray page parameters

Parameter	Description
Column Heating	Selecting this check box turns on the remote column heater control. Clearing this check box turns off the remote column heater control. Default: Clear
Column Temperature (T)	Specifies the temperature setting for the EASY-Spray column. The data system downloads this setting to the EASY-Spray ion source at the beginning of a sample run. Default: 30 °C Range: 30–60 °C

Saving Instrument Methods

After you set up the instrument method parameters for the LC/MS system, save the instrument method to an appropriate directory.

v **To save your current instrument method**

1. Choose **File > Save As.**

The Save As dialog box opens.

2. In the File Name box, type a name for the new instrument method.
3. Click **Save.**

The File Summary Information dialog box opens.

4. Click **OK.**

Creating and Running Sequences

This chapter describes how to create and run sequences in the Xcalibur Sequence Setup view.

Contents

- [Creating Sequences](#)
- [Setting Up the Injection Positions with the Sample Position Selector](#)
- [Running Sequences](#)
- [Taking Corrective Action for Run-Time Errors](#)

Creating Sequences

In the Xcalibur data system, the table that contains the sample injection information is called a sequence. In addition to the data file name for each injection, the sequence must contain the vial or microplate well positions of the samples (unknowns, calibration standards, quality control check standards, and so on) in the sample set, the instrument method to be used, and the injection volume. You can specify a different instrument method for each injection.

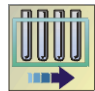

Tip You cannot change the tray type for the EASY-nLC instrument in the Sequence Setup view of the Xcalibur Home Page. If you choose **Change > Tray Name** from the menu bar, the following Home Page message appears:

The configured autosampler does not offer any selection of trays.

To change the tray type, close the Xcalibur data system. Then, open the EASY-nLC Configuration dialog box as described in “[Setting Up the EASY-nLC Configuration](#)” on [page 9](#) and select the appropriate tray type.

v **To create sequences in the Xcalibur data system**

1. Do one of the following to open the Home Page – Sequence Setup view:

- From the Home Page – Roadmap view, click the **Sequence Setup** icon, .
- From any Home Page view, choose **View > Sequence Setup View**.
- From the Instrument Setup window, click the **Home Page** icon, , and then choose **View > Sequence Setup View**.

2. To open the New Sequence Template dialog box, choose **File > New**.

The New Sequence Template dialog box opens (see [Figure 16](#)).

5 Creating and Running Sequences

Creating Sequences

Figure 16. New Sequence Template dialog box

New Sequence Template

General

Base File Name: test Starting Number: 1

Path: C:\Xcalibur\Data\ Browse...

Instrument Method: C:\Xcalibur\methods\easy Browse...

Processing Method: Browse...

Calibration File: Browse...

Samples

Number of Samples: 5 Tray Type: 6x8 vials

Injections per Sample: 1 Initial Vial Position: A1 Re-Use Vial Positions

Base Sample ID: Select Vials... Cancel Selection

Bracket Type

None Open Non-Overlapped Overlapped

Calibration

Add Standards

Number of brackets: 1

Injections per Level: 1

Add Blanks

Fill in Sample ID for Standards

QC

Add QCs

After First Calibration Only

After Every Calibration

Add Blanks

Fill in Sample ID for QCs

OK Cancel Save As Default Help

For the EASY-nLC instrument, you cannot change the tray type in the Sequence Setup view. Tray Type is a read-only parameter.

3. In the General area, do the following:

- Type the base file name for the data files.
- Type a starting number for the value that the data system appends to the base file name.
- Browse to select the directory location for the data files in the Path box.
- Browse to select the instrument method in the Instrument Method box.

4. Set up the vial or well positions by doing one of the following:
- To use the text boxes in the Samples area of the New Sequence Template dialog box, go to [step 5](#).

–or–

- To use the Sample Position Selector dialog box, go to [“Setting Up the Injection Positions with the Sample Position Selector”](#) on [page 43](#).

Tip You can set up the sample positions for a sequence in three ways:

- In the Samples area of the New Template Sequence dialog box, type the number of samples in the Number of Samples box and the starting vial position in the Initial Vial Position box.
- In the Sample Position Selector dialog box, do one of the following:
 - Type the number of samples in the Number of Samples to Select box, and then click **Select** (see [Figure 18](#) on [page 44](#)).
 - Click the positions in the Plate Rack and Vial Rack areas. Use this method to set up noncontiguous, nonsequential, or noncontiguous and nonsequential positions.

5. Set up the vial or well positions by using the Samples area of the New Sequence Template dialog box as follows:
- In the Number of Samples box, type the number of samples for the injection sequence.
 - In the Injections per Sample box, type the number of injections that you want the autosampler to make for each sample.
 - For replicate sample injections, do the following:
 - Select the **Re-Use Vial Positions** check box if you want the autosampler to make replicate injections from the same sample vial or well. Make sure that the vial or well contains a sufficient volume.
 - Clear the **Re-Use Vial Positions** check box if you want the autosampler to make replicate injections from different sample vials or wells. Load the autosampler with a sufficient number of replicate samples.
 - In the Initial Vial Position box, type the vial position for the first sample injection. For alphanumeric entries, use uppercase letters (see [“Taking Corrective Action for Run-Time Errors”](#) on [page 48](#)).

Note The sequence editor fills in the Positions column of the sequence table with contiguous vial or well locations based on the initial position, the number of samples, the number of replicate injections, and the sample selection layout option selected in the Foundation Instrument Configuration window.

- Selecting the Row First option in the instrument configuration application prompts the sequence editor to fill in the positions row by row (for example, A1–A8, B1–B8, and so on).
 - Selecting the Column First option in the instrument configuration application prompts the sequence editor to fill in the positions column by column (for example, A1–F1, A2–B2, and so on).
 - Clearing the Re-Use Vials check box prompts the sequence editor to enter an additional vial or well position for each replicate.
6. To set up the remaining parameters in the New Sequence Template dialog box, refer to the Sequence Setup view Help.
 7. Click **OK** to create the sample sequence.

The sequence information appears in the Sequence Setup view (see [Figure 17](#)).

Figure 17. Sequence Setup view on the Xcalibur Home Page

	File Name	Path	Inst Meth	Position	Inj Vol
1	AssayC1	C:\Xcalibur\Data\	D:\Xcalibur\methods\Protein Assay	A1	-1.0
2	AssayC2	C:\Xcalibur\Data\	D:\Xcalibur\methods\Protein Assay	A2	-1.0
3	AssayC3	C:\Xcalibur\Data\	D:\Xcalibur\methods\Protein Assay	A3	-1.0
4	AssayC4	C:\Xcalibur\Data\	D:\Xcalibur\methods\Protein Assay	A4	-1.0
*					0.0

When the Inj Vol column lists a value of -1, the instrument uses the Sample Pickup volume that is specified in the instrument method.

8. Check the following:
 - The vial or well values in the Position column—Make sure that the entries are valid and use uppercase letters.
 - The numeric value in the Inj Vol column—When the value is -1, the data system uses the sample pickup volume specified in the instrument method.

IMPORTANT The sequence table contains a column called Inj Vol (injection volume). If the column does not appear, choose **Change > Column Arrangement** and add the Inj Vol column to the displayed columns.

To ensure that the injection volume specified in the instrument method file is used as intended, the default value in the Inj Vol column is set to -1 , which is an invalid injection volume. When the Xcalibur data system detects the invalid value during a run, it automatically takes the actual injection volume from the corresponding instrument method file, overriding the -1 with the correct value.

During a run, the autosampler draws the specified injection volume (sample pickup volume) into the sample loop. The system then flushes the sample out of the sample loop and onto the LC column with the specified sample loading volume. Specifying an insufficient loading volume can result in blank injections or poor injection reproducibility because the system is either not loading or only partially loading the sample onto the LC column.

Changing the sample pickup volume by specifying a different value in the Inj Vol column of the sequence does not change the sample loading volume specified in the instrument method. To prevent incompatible settings, avoid using the Inj Vol column to vary the injection volume. Instead, create different instrument methods, where each instrument method contains compatible settings for the sample loading and sample pickup volumes (see “[Sample Pickup and Loading Page](#)” on [page 25](#)). You can use a different instrument method for each sequence row.

Setting Up the Injection Positions with the Sample Position Selector

For information about the parameters in the Sample Position Selector dialog box, see [Table 5](#) on [page 16](#). The functionality of the Sample Position Selector dialog box depends on where you access the dialog box:

- When you open the Sample Position Selector dialog box from the EASY-nLC Configuration dialog box of the Thermo Foundation > Instrument Configuration window, use the dialog box to set up the sample layout and initial vial or microplate well position for an injection sequence (see “[Setting Up the Sample Layout and Start Position](#)” on [page 15](#)).
- When you open the Sample Position Selector dialog box from the New Sequence Template dialog box in the Xcalibur Sequence Setup view, use the dialog box to interactively set up the vial or microplate well positions for the injection sequence as described in the following procedure.

5 Creating and Running Sequences

Setting Up the Injection Positions with the Sample Position Selector

Note The sample position nomenclature is as follows:

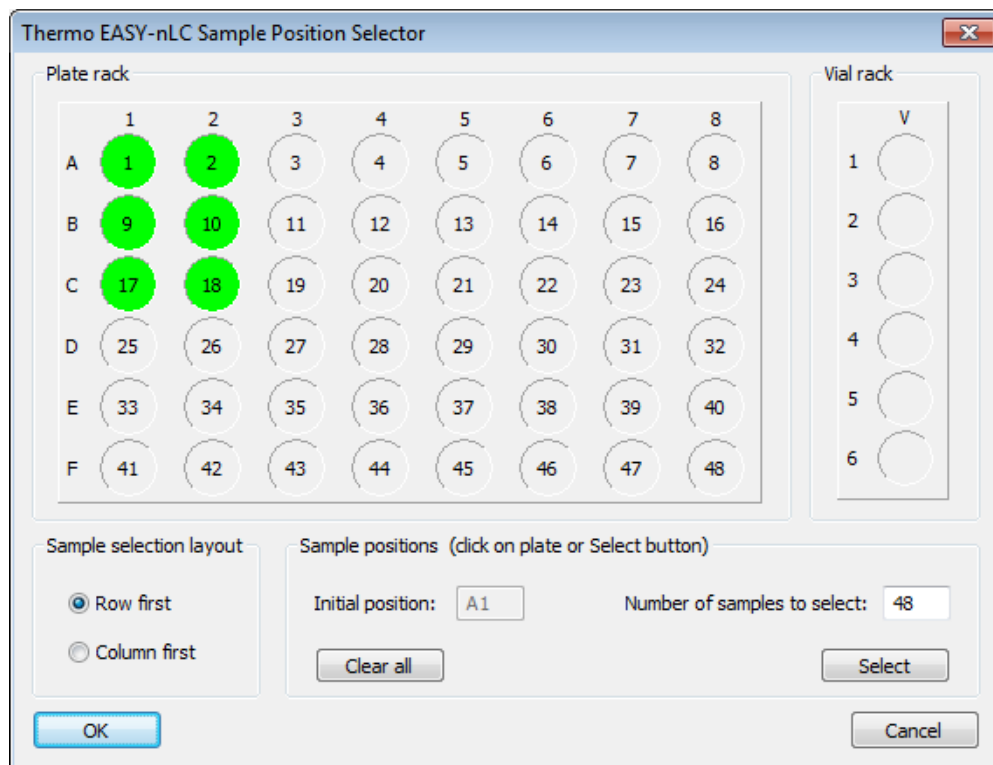
- For 6 × 8 vials, the rows are labeled A–F and the columns are labeled 1–8. The nomenclature for the column A and row 1 position is A1.
- For the large vials in the Vial Rack area, the nomenclature is 1-V1 to 1-V6.
- For the microplate wells of a 96-well microplate, the nomenclature for the well positions is A1 to H12.
- For the microplate wells of a 384-well microplate, the nomenclature for the well positions is A1 to P24.

v **To open the Sample Position Selector dialog box from the New Sequence Template dialog box and set up the sample positions**

1. Click **Select Vials** in the Samples Area (see [Figure 16](#) on [page 40](#)).

The Thermo EASY-nLC Sample Position Selector dialog box opens (see [Figure 18](#)). The rows for the 6 × 8 vial tray are labeled A–F, and the columns are labeled 1–8. The six additional vials in the Vial Rack area are numbered 1-V1 to 1-V6.

Figure 18. Thermo EASY-nLC Sample Position Selector dialog box



2. Follow one of these procedures:
 - [To select vials or wells by using the Plate Rack and Vial Rack areas](#)

- To select contiguous vials or wells in sequential order by using the Select button
3. To set up the remaining parameters in the New Sequence Template dialog box, refer to the Sequence Setup view Help.
 4. Click **OK** to create the sample sequence.

The sequence information appears in the Sequence Setup view on the Xcalibur Home Page (see [Figure 17](#) on [page 42](#)).

v **To select vials or wells by using the Plate Rack and Vial Rack areas**

1. In the Sample Positions (Click on Plate or Select Button) area, click **Clear All**.

This clears the Initial Position box and any selected positions on the Plate Rack and the Vial Rack.

2. Select contiguous or noncontiguous vials or wells in a sequential or nonsequential order by clicking the positions on the Plate Rack and Vial Rack areas in the order that you want the samples to be injected.

Clicking a position turns it green. The first position that you click becomes the initial position in the sequence table. The sequence editor ignores the option selected in the Sample Selection Layout area and fills in the remaining rows in the order of your selections.

3. Click **OK** to return to the New Sequence Template dialog box.

v **To select contiguous vials or wells in sequential order by using the Select button**

1. In the Sample Positions (Click on Plate or Select Button) area, click **Clear All**.

This clears the Initial Position box and any selected positions on the Plate Rack and the Vial Rack.

2. In the Sample Selection Layout area, select either the **Row First** or the **Column First** option.
3. In the Number of Samples to Select box, type the number of sample vials or wells.
4. Click **Select**.

The Plate Rack area displays the selected positions in green.



5. Click **OK** to return to the New Sequence Template dialog box.

Running Sequences


After you create a sequence with the appropriate data file names, instrument methods, and injection positions, you can run one or more rows of the sequence from the Sequence Setup view.

v **To run a single sample, a range of samples, or the entire sequence set**

1. In the Sequence Setup view, do one of the following:

- To inject a single sample, select the specific row in the sequence table. Then choose **Actions > Run This Sample**, or click the **Run Sample** icon, , in the Sequence Editor toolbar.
- To inject a range of samples, select the samples that you want to inject in the sequence table. Then choose **Actions > Run Sequence**, or click the **Run Sequence** icon, , in the Sequence Editor toolbar.

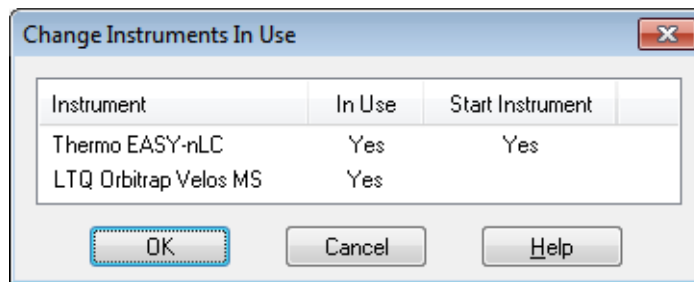
–or–

- To inject the entire sequence, choose **Actions > Run Sequence**, or click the **Run Sequence** icon, , in the Sequence Editor toolbar.

One of the following actions occurs:

- If the data system detects a new instrument configuration, the Change Instruments In Use dialog box opens (Figure 19). Go to [step 2](#).
- If the instrument configuration has not changed since the last sequence run, the Run Sequence dialog box opens (Figure 20). Go to [step 3](#).

Figure 19. Change Instruments In Use dialog box

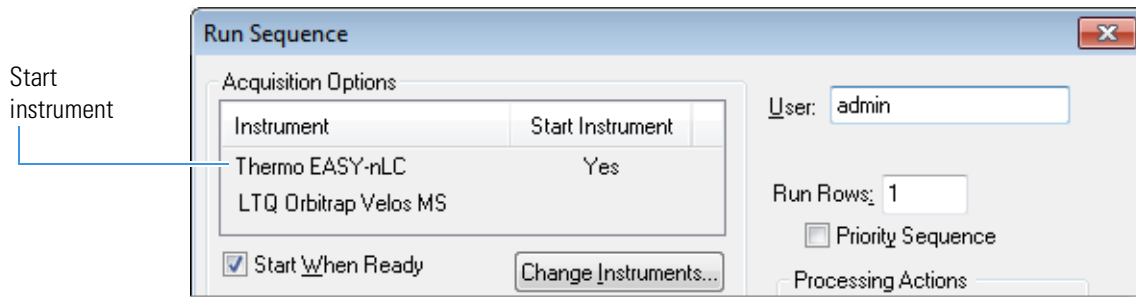


2. If the Change Instruments In Use dialog box opens, do one of the following:

- If the EASY-nLC instrument is not listed as the Start Instrument, click the EASY-nLC row in the Start Instrument column and select **Yes**. Then click **OK** to accept the new setting.
- If the EASY-nLC instrument is listed as the Start Instrument, click **OK**.

The Run Sequence dialog box opens (see [Figure 20](#)).

Figure 20. Run Sequence dialog box



3. Check whether the EASY-nLC instrument is listed as the start instrument in the Acquisition Options area.

The Start Instrument column displays Yes for the instrument that triggers data acquisition. When the EASY-nLC instrument begins its gradient program, it signals the MS detector to begin data acquisition. This signal is transmitted through the contact closure cable.

4. Depending on whether the EASY-nLC instrument is listed as the start instrument, do one of the following:
 - If it is listed as the start instrument, go to [step 6](#).
 - If it is not listed as the start instrument, go to [step 5](#).
5. To make the EASY-nLC instrument the start instrument, do the following:
 - a. Click **Change Instruments**.
The Change Instruments In Use dialog box opens.
 - b. Click the Thermo EASY-nLC row in the Start Instrument column.
The blank cell now displays Yes.
 - c. Click **OK** to accept the new setting and close the dialog box.
6. In the Run Sequence dialog box, do the following:
 - a. Make sure that the **Start When Ready** check box is selected.
 - b. Check the range in the Run Rows box.
 - c. Click **OK** to submit the sample run to the acquisition queue.

If the Automatic Pre-run Maintenance feature is turned on and more than 8 hours have elapsed since the last sequence began, the instrument automatically runs the Flush Air script before running the new sequence. For more information about the Automatic Pre-run Maintenance feature, see [“Modifying the HPLC Properties”](#) on [page 20](#).

Taking Corrective Action for Run-Time Errors

The method editor in the EASY-nLC view of the Instrument Setup window checks each parameter entry; however, it does not check for volume conflicts among the entries.

If you have specified an invalid volume for sample loading, column equilibration, or the gradient program, an error message appears when you attempt to run samples with the instrument method from the Sequence Setup view.

Table 11 describes the corrective action for common run-time errors that are caused by incompatible settings in the instrument method (.METH).

Table 11. Run-time errors caused by incompatible settings in the instrument method

Message	Corrective action
Sample pickup flow must be greater than 0 when pickup volume is not 0.	Enter a nonzero flow rate in the Flow box in the Sample Pickup area on the Sample Pickup and Loading Page.
Solvent A consumption in the method is greater than 120.0 during precolumn, analytical column, and sample loading.	Modify the method so that the total volume is less than 120 µL for these three steps: sample loading, precolumn equilibration, and analytical column equilibration.
Gradient: Solvent A consumption is greater than 132 µL.	Check the gradient table. Reduce the volume of solvent A in the gradient program.
Autosampler wash flush volume out of range:137 (30.25<—>100.75)	For a 20 µL sample loop, enter a volume from 30.25 to 100.75 µL in the Flush Volume box in the Standard Wash area of the Autosampler page.

Table 12 lists a common run-time error caused by incorrect entries in the Xcalibur sequence.


Table 12. Run-time error caused by incorrect entries in the sequence table

Message	Remedy
EASY-nLC devices reported an error during the Prepare for Run command.	Reduce the injection volume (sample pickup volume). The sample pickup volume cannot be greater than the sample loop size minus 2 µL, or 18 µL for a 20 µL sample loop.

Viewing the Run Status in the Information View

Use the Status page of the Xcalibur Information view to view the run status of the EASY-nLC instrument.

v To monitor the run status for the EASY-nLC instrument from the Information view

1. Open the Xcalibur Home Page window as follows:
 - From the Processing Setup window, choose **GoTo > Xcalibur Home Page**.
 - From the Instrument Setup window, click the **Return to Home Page** icon, , on the toolbar.

Note The Qual and Quan Browser windows open in front of the Home Page window.


2. If the Information view is hidden, click the **Info View** icon, , in the View toolbar (Figure 21).
3. During a run, click the Thermo EASY-nLC expand/collapse icon to display the EASY-nLC run progress and the instrument component readouts on the bottom portion of the Status page.
4. If the MS detector remains in the Waiting for Contact Closure state during a run, do the following:
 - Check the contact closure connection between the contact closure pins on the back panel of the EASY-nLC instrument and the MS detector's Start In pins.
 - Check the MS detector selection (with the part number for the appropriate contact closure cable) on the Configuration > Connections page of the EASY-nLC touch-screen application.

Figure 21 shows the Status page for an LC/MS system with an EASY-nLC instrument and an LTQ XL™ MS detector. The Load Sample state for the EASY-nLC (instrument) means that the EASY-nLC instrument is currently loading the sample onto the column assembly. The Waiting for Contact Closure state for the mass spectrometer means that the MS detector is waiting for the contact closure signal from the EASY-nLC instrument.

Figure 21. Status page of the Information view

Info view icon

Expand/collapse icon

Status messages

Run-time steps for the EASY-nLC instrument

During a run, the MS detector remains in the Waiting for Contact Closure state until the LC instrument sends the start data acquisition signal.

Status of the instrument components

Thermo Xcalibur Roadmap

File Actions View Tools GoTo Help

Status Acquisition Queue

Run Manager

- ... Check Devices
- ... Sequence:
- ... Sample Name:
- ... Working On:
- ... Position:
- ... Raw File:
- ... Inst. Method:
- Thermo EASY-nLC
- ... Running
- LTQ XL MS
- ... Waiting for Contact Closure

admin@10.128.12.217 (LC-030024)

Instrument Status:

- Flow sensor calibration due
- Solvents Refreshed

Execution Status:

- Initialize system
- Refill A
- Refill B
- Equilibrate precolumn
- Equilibrate analytical column
- Pickup sample
- Load sample
- Prepare gradient**
- Autosampler wash + refill S

Pump A:

- Desired flow [nl/min] : 0.00
- Position [µl] : 123.11
- Pressure [bar] : 65.80
- Real flow [nl/min] : 554.90

Pump B:

- Desired flow [nl/min] : 0.00
- Position [µl] : 137.59
- Pressure [bar] : 35.80
- Real flow [nl/min] : 48.70
- ACN concentration [%] : 80.00

Pump S:

- Desired flow [nl/min] : 0.00
- Position [µl] : 140.04
- Pressure [bar] : -2.00

Valve A:

- Position : 1-6

Valve B:

- Position : CENTER

Valve S:

- Position : 1-6

Valve W:

- Position : 1-6

Autosampler:

- Temp [°C]: 6.97



Index

A

About box, touch-screen application 10
Acquisition Server error messages 48
Automatic Pre-run Maintenance feature 21, 47
autosampler model 11, 14
Autosampler page 33

B

blank injections 43

C

Change > Tray Name command 39
Change Instruments In Use dialog box 46
Column first option, Sample Position Selector dialog box 45
column heater, EASY-Spray ion source 37
communication issues
 caused by Ethernet cable or incorrect IP addresses 7
 caused by virus scanner software 4
 testing the Ethernet connection 11
computer
 See data system computer
configuration parameters, EASY-nLC 13
contact closure cable 47, 49
contacting us x
current user, touch-screen application 10
Custom option, autosampler wash step 35
Cycles box, autosampler wash step 35

D

data acquisition, premature termination of v

data system computer
 connecting to EASY-nLC instrument 7
 power saver settings viii
 system requirements vii
 virus scanner setting 4
device driver
 installing 3
 system requirements vii
 uninstalling 2
Device Types list 9
Devices InstallShield Wizard 3
Driver Info readout 14
duration, gradient program 29

E

EASY-nLC VI control software
 Autosampler page 33
 EASY-nLC Configuration dialog box 13
 EASY-nLC view, Instrument Setup window 24
 Gradient page 27
 Pre-Column and Analytical Column page 30
 Sample Pickup and Loading page 25
 Sample Position Selector dialog box 15, 43
EASY-Spray column heater
 adding to the Devices list 19
 controlling the temperature 37
Edit button, EASY-nLC Configuration dialog box 14
error messages, run time 48
Ethernet connection 7

Index:

F

- F1 key, accessing Help with [vi](#)
- firewall, network [2](#)
- flow rate
 - analytical column equilibration step [32](#)
 - gradient program [29](#)
 - precolumn equilibration step [31](#)
 - sample loading step [26](#)
 - sample pickup step [26](#)
- Foundation platform [vii](#)

G

- Gradient page [27](#)

H

- Heater port, EASY-Spray ion source [37](#)
- Help, accessing [vi](#)
- hibernate setting [viii](#)
- Home Page icon [39](#)

I

- Idle Flow Rate readout [14](#)
- Idle Mixture readout [14](#)
- Information view, Xcalibur data system [49](#)
- Initial Position entry [14](#)
- injection volume [25](#), [42](#)
- instrument control software
 - See device driver and EASY-nLC VI control software*
- Intelligent Flow Control (IFC) system readout [14](#)
- IP address, EASY-nLC instrument [13](#)
- IRC communication [5](#)

L

- LAN port, EASY-nLC [7](#)
- Loop Volume readout [14](#)

M

- manuals, accessing from the data system computer [vi](#)
- maximum pressure
 - analytical column equilibration step [32](#)
 - precolumn equilibration step [31](#)

- sample loading step [26](#)

- McAfee virus scanner [4](#)
- microwell plates [14](#)
- MS detector, triggering data acquisition [47](#), [49](#)

N

- negative value in the Inj Vol column of the Sequence Setup view [42](#)
- network cards [vii](#)
- network configuration, EASY-nLC [10](#)
- network firewall [2](#)
- New Sequence Template dialog box, Xcalibur [39](#)
- nomenclature, sample position [44](#)

P

- parameter description tables
 - Autosampler page [35](#)
 - EASY-nLC Configuration dialog box [13](#)
 - EASY-Spray page [37](#)
 - Gradient page [29](#)
 - Pre-column and Analytical Column page [31](#)
 - Sample Pickup and Loading page [26](#)
 - Sample Position Selector dialog box [16](#)
- P-Bus cable [37](#)
- plate installed, selecting [14](#)
- Plate Rack area, Sample Position Selector dialog box [45](#)
- plate type [14](#)
- port 22, TCP/IP traffic [2](#)
- Position column, Sequence Setup view table [42](#)
- power saver settings [viii](#)
- Pre-Column and Analytical Column page [30](#)
- prerequisites, installation [1](#)
- pressure, maximum
 - See maximum pressure*
- pump solvents, A and B [14](#)

R

- readouts
 - EASY-nLC Configuration dialog box [14](#)
 - Status page, Information view [49](#)
 - Tray Type box, New Sequence Template dialog box [40](#)
- release notes [vii](#)

requirements
 computer [vii](#)
 software [vii](#)
 Row First option, Sample Position Selector dialog box [45](#)
 Run Sample icon, Sequence Setup view [46](#)
 Run Sequence dialog box [46](#)
 Run Sequence icon, Sequence Setup view [46](#)
 run time error messages [48](#)

S

sample layout and start position, configuration setting for [15](#)
 sample layout, selecting [14](#)
 sample loop size [48](#)
 Sample Pickup and Loading page [25](#)
 Sample Position Selector dialog box
 selecting sample layout and start position for the instrument configuration [15](#)
 selecting the vial or microplate well positions for a sequence [44](#)
 screen saver settings [viii](#)
 Select Vials button, New Sequence Template dialog box [44](#)
 sequence runs
 premature termination of [v](#)
 setting up the injection sequence table [39](#)
 starting from the Sequence Setup view [46](#)
 Sequence Setup view of the Home Page window [39](#)
 software requirements [vii](#)
 solvents
 specifying in solvent reservoir bottles [12, 14](#)
 wash bottles W1 to W3 [34](#)
 Source list, autosampler wash step [35](#)
 Standard option, autosampler wash [33, 35](#)
 Start Position readout [14](#)
 Status page of the Information view, Home Page window [49](#)
 system requirements [vii](#)

T

temperature, EASY-Spray source column heater [37](#)
 Test Connection button [10, 13](#)

Thermo EASY-nLC Configuration dialog box [9](#)
 Thermo Foundation Instrument Configuration window [7](#)
 Thermo logo, touch-screen application [10](#)
 touch-screen application
 About box [10](#)
 Maintenance > Devices page [20](#)
 selecting the MS detector connected through contact closure to the EASY-nLC instrument [49](#)
 version [12](#)
 tray type [14, 39](#)
 troubleshooting
 communication issues [viii, 7, 11](#)
 contact closure issues [49–50](#)
 data acquisition issues [viii](#)
 run-time errors [48](#)

U

URLs, consumable parts [x](#)
 User Name configuration parameter [13](#)

V

Vial Rack area, Sample Position Selector dialog box [44](#)
 vial rack positions [16](#)
 vial tray [14](#)
 virus scanner, McAfee [4](#)
 volume
 analytical column equilibration [32](#)
 column in custom wash table [35](#)
 conflicts [48](#)
 flush, autosampler wash step [35](#)
 precolumn equilibration [31](#)
 sample loading [26](#)
 sample pickup [26](#)

W

waiting for contact closure [49](#)
 wash, autosampler [35](#)
 Windows updates, automatic [viii](#)

X

Xcalibur data system

Column Arrangement dialog box, Sequence
Setup

view [43](#)

Instrument Setup window [23](#)

New Sequence Template dialog box [39](#)

Sequence Setup view [39](#)

Status page, Information view, Home Page
window [49](#)