

Laboratory software

## Food and Beverage Solution for QA/QC

Providing food and beverage QA/QC laboratories with a comprehensive pre-configured informatics solution with a low total cost of ownership and high return on investment

Food and beverage companies face extremely tight margins, so careful cost control is essential to success. The Food and Beverage Solution for Thermo Scientific™ SampleManager LIMS™ is an implementation accelerator, providing food and beverage QA/QC laboratories with industry-standard functionality in a pre-configured package.

The solution leverages SampleManager LIMS functionality and capabilities including the laboratory execution system (LES), customer portal, data analytics, and ready to use dashboards. With this pre-configured solution, your lab can get up and running faster with less user training in a system that's easier to maintain.



### FASTER ROI

- Accelerated implementation
- Pre-configured workflows
- Analytics and KPIs



### QA/QC READY

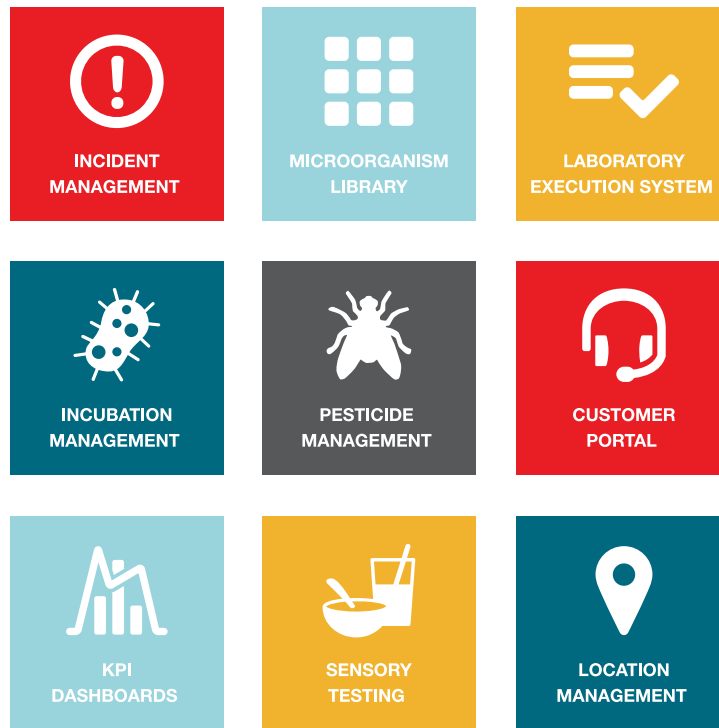
- Complete QA/QC testing solution
- Pre-defined LES methods
- Customer portal to view jobs and results



### DASHBOARDS

- Easy, user friendly navigation
- Intuitive features
- Up-to-date information on lab health

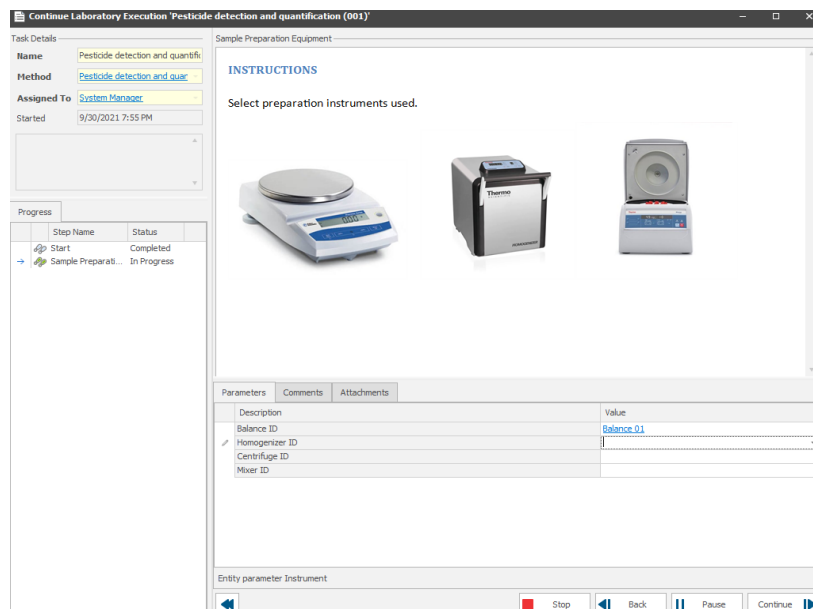
## Pre-configured industry standard features



## Pre-configured LES methods

The Food and Beverage Solution includes three pre-defined LES methods specifically designed for food and beverage testing laboratories. These methods enable you to get up and running

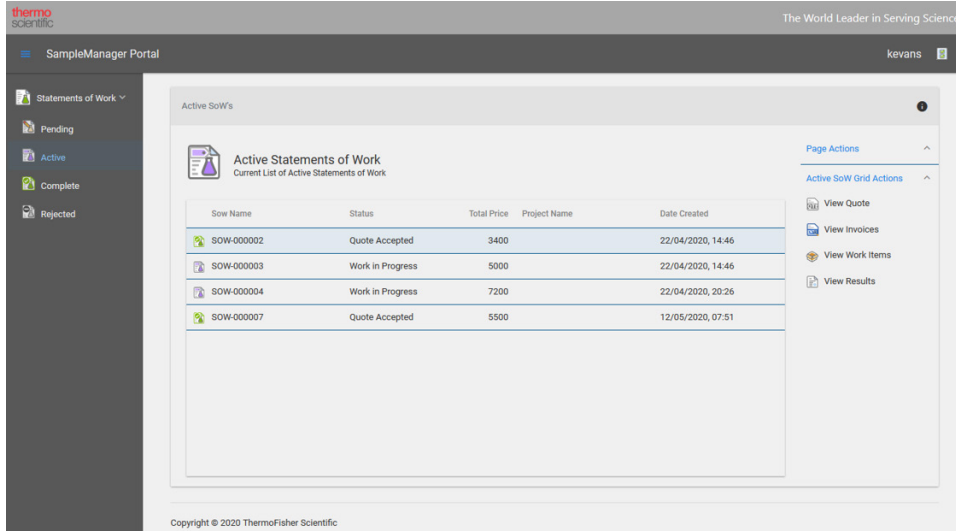
quickly on LES to execute lactose detection and quantification, mycotoxin detection and quantification, and pesticide detection and quantification.



### Secure, professional customer portal

Contract labs using the Food and Beverage Solution can offer clients a secure online portal to access their work and results, releasing their analysts from administrative tasks and improving customer experience. The portal enables contract lab clients to

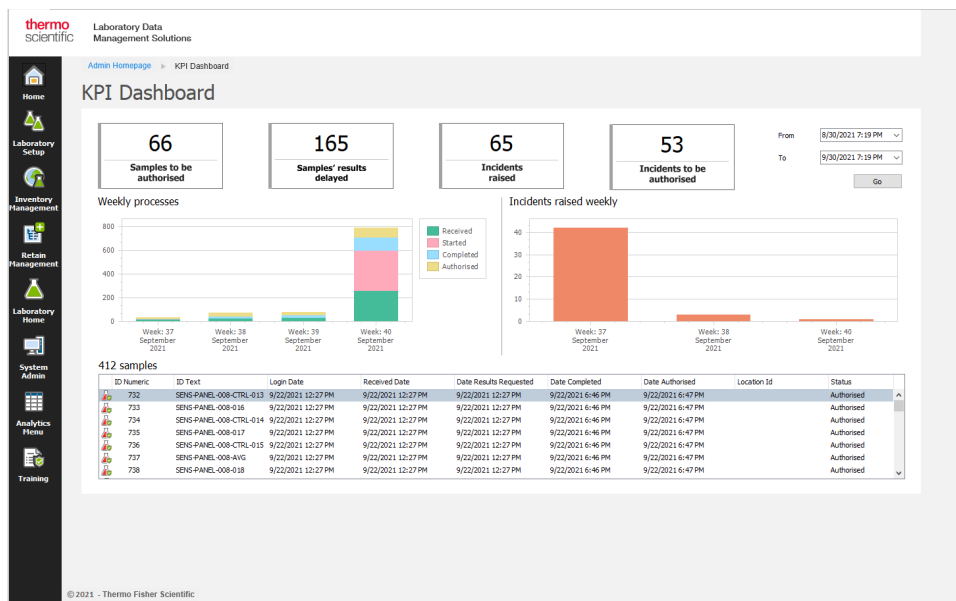
approve quotes, log in samples against statements of work, and access results. The configurable user interface allows customer re-branding, making it possible to change colors, add logos and create tailored navigation menus.



### Data analytics and Key Performance Indicators

Powerful pre-configured KPI dashboards provide lab managers an up-to-date overview of lab performance. At a glance, the lab manager or system administrator can identify performance

bottlenecks, monitor stock levels, and track overall lab performance.



## Enhanced incident management

The Food and Beverage Solution includes pre-configured incident management capabilities to help you manage out of specification or out of trend results. When results are outside the expected range, the solution automatically creates an incident for the result and notifies the user. Users can easily track the investigation in the system, including any additional samples

tested. The system captures corrective actions and can link to an external investigation system. Results with open incidents are highlighted on the screen for easy identification. In the event of a recall, powerful lot and batch traceability enables users to quickly identify affected product.

The image displays three overlapping screenshots of the Laboratory Data Management Solution software interface:

- Top Left:** A 'Workflow' dialog box with a 'Close' button, overlaid on a data table. The table has columns for 'Level ID', 'Name', 'Min', 'Max', 'Date', 'Site', 'Parent Value', 'Auth Reason', 'Incident ID', 'Title', 'Status', and 'Description'.
- Top Right:** A 'Data Approval' window showing a table of data points with columns for 'Sample ID', 'Log ID', 'Parent ID', 'Date Acquired', 'User', 'Date Approved', 'Location ID', and 'Status'. A 'Data Approval' dialog box is also visible with a 'Yes' button.
- Bottom:** A 'Certificate of Analysis' window displaying a detailed table of test results with columns for 'Sample ID', 'Log ID', 'Parent ID', 'Date Acquired', 'User', 'Date Approved', 'Location ID', and 'Status'. The table contains multiple rows of data.

## Sensory testing capabilities

Understanding the sensory experience of a food (appearance, texture, taste, and smell) can provide insight into the potential appeal of the product to your target demographic. The Food and Beverage solution for SampleManager LIMS software includes a pre-defined function to manage sensory analysis results. Analysts can quickly identify testing characteristics and the number of test participants. The sensory panel report captures results and produces a radar chart displaying the product's characteristics.

The image shows a 'Sensory Panel Report' for sample SENS-PANEL-009. The report includes the following information:

- Job name:** SENS-PANEL-009
- Date created:** 9/22/2021 7:00:06 PM
- Date completed:** 9/23/2021 6:22:51 AM

The report features a radar chart with eight axes representing sensory characteristics: Alcohol warmth, Tropical fruit flavour, Sweetness, Floral flavour, Citrus flavour, Carbonation, Caramel flavour, and Bitterness. The chart shows a profile with high scores in Alcohol warmth, Tropical fruit flavour, and Sweetness, and lower scores in Bitterness and Carbonation.

Additional report details:

- Sample Id numeric: 773
- Sample Id text: SENS-PANEL-009-AVG
- Sample type: SENSORYAVG
- Sample status: Authorised

At the bottom of the report, it states: 9/28/2021 6:47:39 PM, Powered by Thermo Scientific™ SampleManager LIMS™ Software, Page 1 of 1

## Location management

Location management shows a breakdown of sample activity by location, with total sample activity for the selected date range appearing on the right hand side.

Each location is clickable, so you can drill down into additional sample detail.

