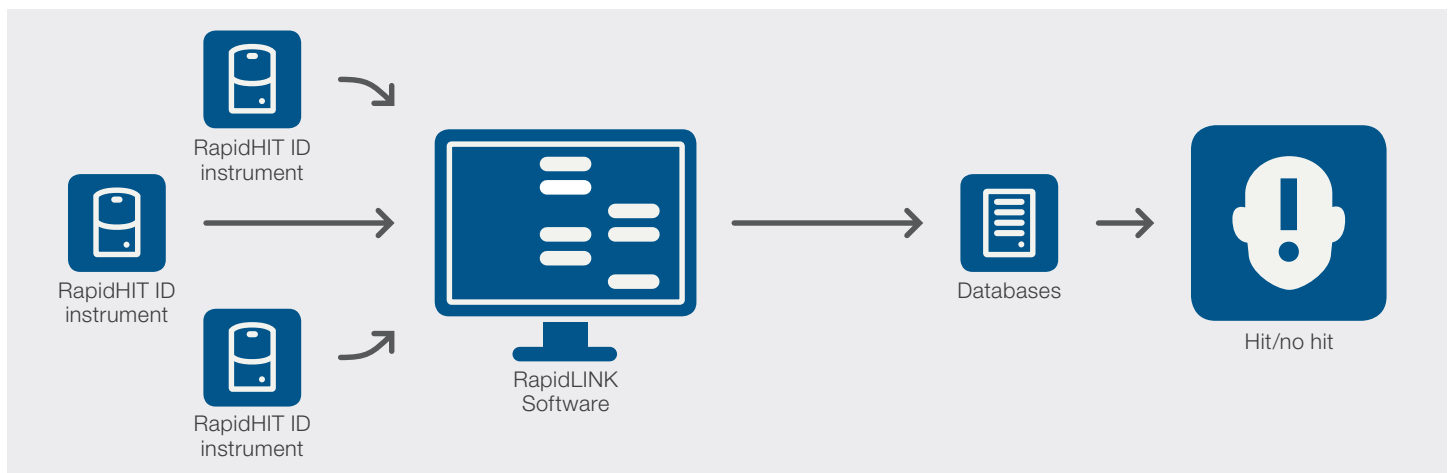


Centralized control of Rapid DNA results from the laboratory or the field

RapidLINK Software

Remotely monitor DNA results

Applied Biosystems™ RapidLINK™ Software enables real-time access, review, and control of short tandem repeat (STR) profiles generated by Applied Biosystems™ RapidHIT™ ID instruments in the lab or located remotely. Enhance your workflow and expedite identity confirmation, securely and efficiently.



- Securely connect multiple RapidHIT ID instruments
- Remotely access and monitor all instruments from a central location
- Quickly assess sample quality and DNA quantity
- Control and review DNA test results prior to database upload
- Enjoy role-based access, including compliance with competency testing requirements
- Utilize custom workflow configurations to determine passing profile criteria and required levels of review

Turn rapid results into rapid intelligence with Matching Suite Software

RapidLINK Match App

Identifies a match between two DNA profiles and reports a likelihood ratio that the match did not occur due to random chance from a member of the population who happened to have the same DNA profile as the suspect. RapidLINK Match App is “on” all the time.

Likelihood ratio for the overall match between two profiles

Locus	Blood found at scene	Suspect cheek swab	Likelihood ratio
40 of 40 alleles match Likelihood ratio: 2.48×10^{28}			
D3S1358	14, 18	14, 18	5.41E+01
VWA	15, 17	15, 17	1.42E+01
D16S539	11, 12	11, 12	6.40E-01
CSF1PO	11, 12	11, 12	3.43E+01
TPOX	10, 11	10, 11	1.51E+01
AMEL	X, Y	X, Y	1.52E+01
D8S1179	15, 14	15, 14	1.49E+01
D21S11	28, 29	28, 29	2.61E+01
D18S51	14, 16	14, 16	1.88E+01
D2S441	14, 14	14, 14	1.59E+01
D19S433	13, 13	13, 13	1.51E+01
TH01	6, 9	6, 9	1.51E+01
FGA	20, 20	20, 20	1.16E+01

Likelihood ratio for matching alleles at each locus

RapidLINK Familial App

Identifies DNA profiles that may have a familial relationship, including:

- Parent–child
- Grandparent–grandchild
- Aunt/uncle–niece/nephew



Confirming familial links may generate leads for investigators to explore in an otherwise cold trail. Familial search may also be conducted in victim databases (e.g., for disaster victim identification or missing persons searches).

RapidLINK Staff Elimination Database

Recognizes a match to a known staff profile, indicating a possible contamination event during sample processing by an investigator, forensics technician, or other individual.

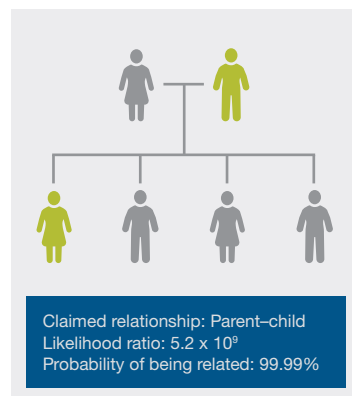
The administrator can easily maintain an up-to-date elimination database, adding newly trained staff and removing inactive members.

REVIEW	DATE:TIME	SAMPLE ID	
✓	10/3/18 12:39:00 PM	UNK36	
✓	10/3/18 9:38:00 AM	UNK35	
✓	10/2/18 5:42:00 PM	UNK29	
✓	10/2/18 11:18:00 AM	206M_GP	
✓	10/2/18 9:36:00 AM	UNK4	!
📄	9/27/18 12:23:00 PM	Reviewable	
✓	9/26/18 8:28:00 AM	POSCTRL	
✓	9/20/18 9:19:00 AM	NEGCTRL_DyeBlob	⊗
✓	9/18/18 2:53:00 PM	Allelic Ladder	⊗
✓	9/11/18 1:10:00 PM	172M_GC	⊗

RapidLINK Kinship App

Detects probability of a hypothesis that two individuals are related by reporting a likelihood ratio for the claimed relationship.

May help border security agents detect victims of human trafficking.



Features of RapidLINK Software	
Connectivity	One software installation supports multiple RapidHIT ID instruments
System management	Remote management of instruments, DNA profiles, users, and log files
New user interface	Browser-based application with multi-user accessibility
DNA profile review	Integrates results from Applied Biosystems™ GeneMapper™ ID-X Software
Reporting	Generates audit trails for runs and instruments

Find out more at thermofisher.com/rapiddna