

Reproducible dispensing of live cells with the Thermo Scientific Multidrop Combi reagent dispenser

Application laboratory, Thermo Fisher Scientific, Vantaa, Finland

Key Words

Thermo Scientific Multidrop Combi, Cell dispensing, Cell viability, Reproducible dispensing, Dispensing cassette, AQ assay

Introduction

High throughput cell-based assays are an important part of drug screening, and successfully dispensing viable cells is a key step in the process. Automated reagent dispensers are used to achieve higher throughput in the screening laboratories. Dispense must not only be quick, it must also be gentle enough to ensure cell viability.

Here we present the process of dispensing live HeLa S3 cells with the Thermo Scientific™ Multidrop™ Combi instrument into 96- and 384-well plates and compare the viability of cells to conventional hand-pipetting. The peristaltic pump technology used in the Multidrop Combi reagent dispenser and optimized dispensing cassettes assure fast dispensing of cells on any multi-well plate and well size for any cell-based assay.

Materials and methods

Culturing the cells

The HeLa S3 cells were grown in adherent culture, Kaighn's media with FBS and penicillin/streptomycin, in cell culture flasks at 37°C with 5% CO₂. The cells were maintained at 0.2 - 0.6 x 10⁶ cells/ml by passaging them 1:5 - 1:8 every three days.

Detaching and dispensing

The number of cells was calculated after the cells were detached from the bottom of the flask with trypsin and the media was changed. The Multidrop Combi reagent dispenser was used to dispense the cell suspension and reagents. The tubings were pre-wetted with PBS and primed with cell suspension before dispensing the actual samples. Otherwise the priming, dispensing and cleaning of the dispensing cassettes was performed according to the maintenance guide for cell dispensing with the Multidrop Combi dispenser (1). When dispensing several plates, the cassette was primed before each plate. The Thermo Scientific Finnpiette™ Focus was used to dispense the cells for the control wells.



The Multidrop Combi was used to dispense 100 µl volumes of the cell suspension into wells of Thermo Scientific Nunc™ Microwell™ 96 F-microplates with the standard tube-dispensing cassette, and 30 µl volumes into wells of 384 Optical Bottom plates with the small tube plastic tip dispensing cassette. This resulted as cell concentration of 5000 cells per well in 96-well plate and 2000 cells per plate in 384-well plate, respectively. The cells were automatically dispensed into columns 1-10 of the 96-well plates and columns 1-22 of the 384-well plates.

The same number of cells was added by hand-pipetting into the second-to-last column of the plates, and growth media was dispensed into the last column for the blank control. Cells were dispensed in four replicate plates for both plate types.

Cell viability assay

The viability of the cells after dispensing was tested with CellTiter 96® AQ_{one} One Solution Cell Proliferation Assay (MTS). Before dispensing the cells, the AQ reagent was dispensed with the Multidrop Combi instrument and the small tube plastic tip dispensing cassette into the wells. The volume of the AQ reagent was 20 µl/well for the 96-well plates and 6 µl/well for the 384-well plates.

The plates were incubated for 2 hours at 37°C. The Thermo Scientific Varioskan™ Flash reader was then used to record the absorbance at 490 nm.

Results

Visual examination

The adherent HeLa S3 cells were visually examined under the microscope before detaching the cells, and were found to be viable (figure 1a). The number of cells was then calculated after detachment and the visual estimation with the microscope was done again after dispensing the cells into the microplate with Multidrop Combi (figure 1b). The cells in the suspension were viable and intact after dispense. The cells were further cultivated, and the cell culture adhered to the microplate and continued growing evenly (figure 1c).

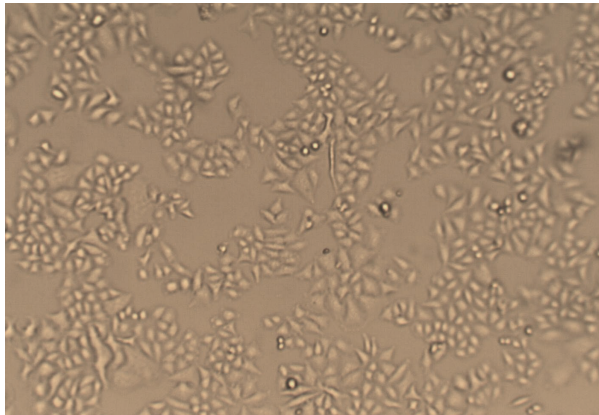


Figure 1a: HeLa S₃ cells attached to the bottom of the cell culture flask

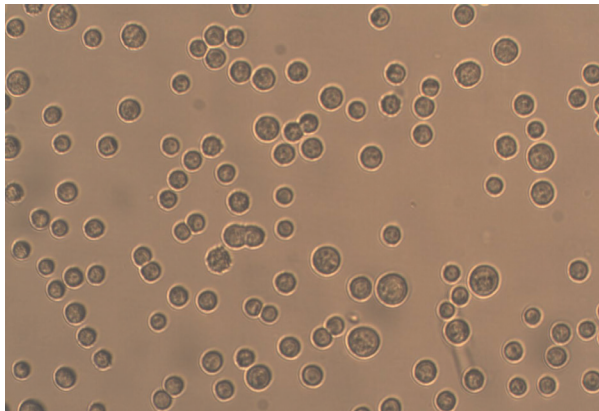


Figure 1b: HeLa S₃ cells in the suspension immediately after dispense

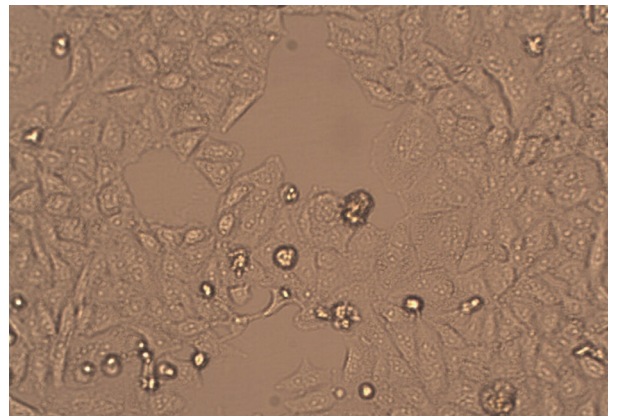


Figure 1c: Cells 24 hours after adhering to the 96-well plate bottom

Cell viability assay

The cell proliferation assay demonstrated that the levels of viability for the cells dispensed with the Multidrop Combi and the manual pipette were the same.

Figure 2a shows the evenness of dispense with the standard tube-dispensing cassette into the 96-well plate. The result of the column is the average value of the wells in one column, e.g. wells A01-H01.

Figure 2b shows the same even distribution with the small tube plastic tip dispensing cassette. The average of the column is calculated from each column, e.g. A01-P01.

Cell viability is comparable to hand pipetting with both cassettes and plate.

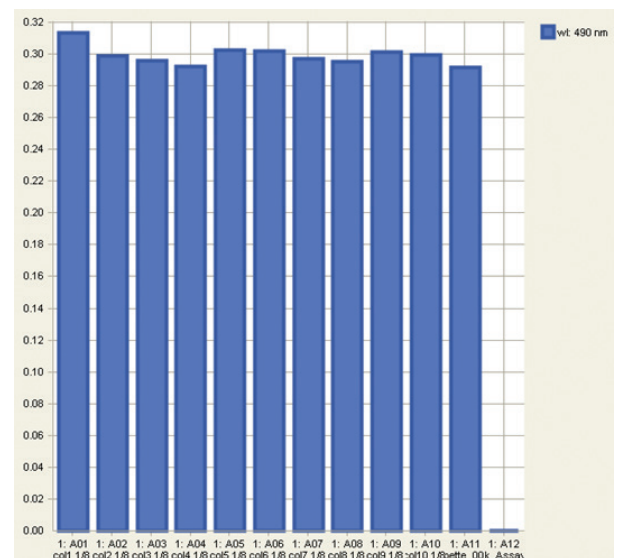


Figure 2a: Dispensing of the cell suspension on the 96-well plate: A01-A10 Multidrop standard tubing, A11 hand pipetting, A12 blank control

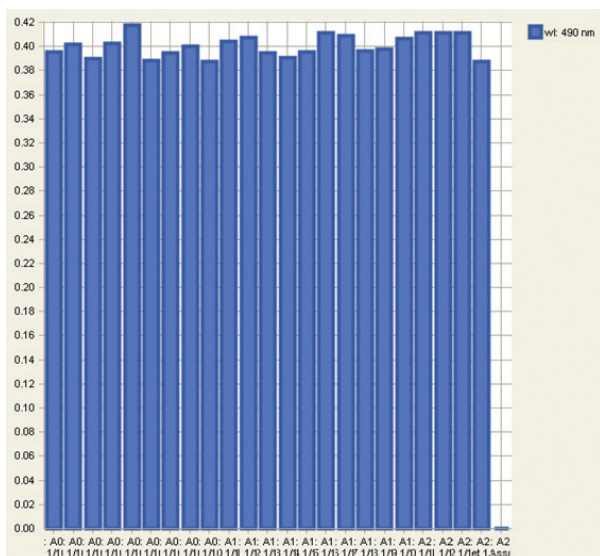


Figure 2b: Dispensing of the cell suspension on the 384-well plate: A01-A22 Multidrop small plastic tubing, A23 hand pipetting, A24 blank control

Conclusions

The cell viability assay demonstrated that the Multidrop Combi dispenser is suitable for handling live cells. The cells remained intact and viable after dispense, and there were no traces of mechanical stress on the cells. Both the standard tube and small tube plastic tip dispensing cassettes show excellent precision for cell dispense.

The main issue to obtain reproducible cell dispensing results is the evenness of the cell suspension and the maintenance of the dispensing cassette to avoid any clogging of the tubing or the tips.

References

1. Technical Note: [Maintenance guide for cell dispensing with the Thermo Scientific Multidrop Combi](#)

www.thermoscientific.com/multidrop

© 2014 Thermo Fisher Scientific Inc. All rights reserved. All trademarks are the property of Thermo Fisher Scientific Inc. and its subsidiaries. This information is presented as an example of the capabilities of Thermo Fisher Scientific Inc. products. It is not intended to encourage use of these products in any manners that might infringe the intellectual property rights of others. Specifications, terms and pricing are subject to change. Not all products are available in all countries. Please consult your local sales representative for details.

North America: +1 800-625-4327

Europe:

Austria +43 1 801 40 0

Belgium +32 2 482 30 30

Finland/Nordic +358 9 329 100

France +33 2 28 03 20 00

Germany National Toll Free 08001-536 376

Germany International +49 6184 90 6940

Italy +39 02 95059 1

Netherlands +31 76 571 4440

Russia/CIS +7 (812) 703 42 15

Spain/Portugal +34 93 223 3154

Switzerland +41 44 454 12 12

UK/Ireland +44 870 609 9203

Asia:

India +91 22 5542 9494

Japan +81 45 453 9220

China +86 21 6865 4588 or +86 10 5850 3588

Other Asian countries +852 2885 4613

Countries not listed:

+49 6184 90 6940 or +33 2 28 03 20 00

Thermo
SCIENTIFIC

A Thermo Fisher Scientific Brand