

Thermo Scientific AutoMITTER PRO

Multivariable transmitter

The Thermo Scientific™ AutoMITTER PRO multivariable transmitter features a single board, user-friendly design to simplify maintenance and troubleshooting. Automatic detection via AutoCONFIG software allows for quick and easy field deployment.

Features

- Single board design
- In/Out connectors
- Intrinsically safe
- Rotary switch addressing

The next-generation Thermo Scientific AutoMITTER PRO features a single board, user-friendly design to simplify maintenance and troubleshooting. It also minimizes capital expenses by eliminating the need for third party transmitters. Auto detection when utilized with AutoPILOT PRO and AutoEXEC.

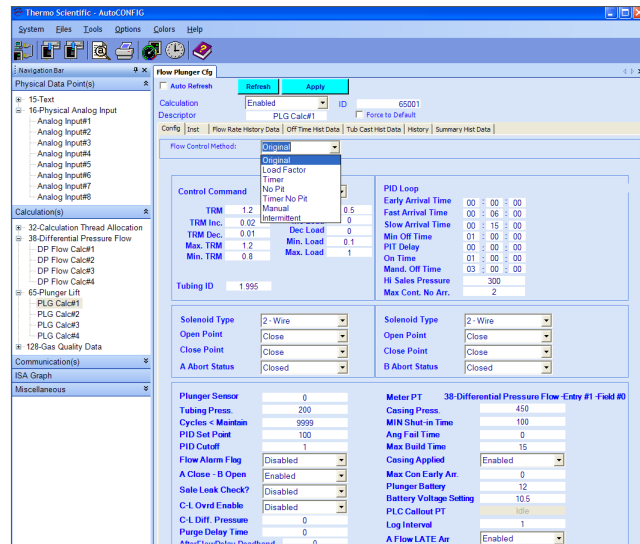


AutoCONFIG Configuration Software

Thermo Scientific flow computers are built on an innovative field proven platform incorporating the latest measurement standards and calculations for hydrocarbon measurement. AutoCONFIG interface allows for simplified configuration eliminating need for indepth programming. Control functions include Station Control, PID, Alarming, Event based logging and many more.



Thermo Scientific™ AutoMITTER PRO



Thermo Scientific™ AutoCONFIG built-in software.

Thermo Scientific™ AutoMITTER PRO

Hardware

RTD Input 32 bit Freescale™ Coldfire®, operates at 200 MHz, processes at 300 million instructions per second (MIPS)
RS485, maximum serial data rate: 9600 bps; Protocol: 8-bit RTU Modbus at 9600 bps

Electrical

Input Power +5.5 VDC to +16 VDC
Current Consumption Normal operation (unit in sleep mode except during intermittent polling): 6 mA average; 12 mA average with continuous polling (unit in awake mode)
Input/Output Protection All I/O lightning/surge protected; Meets or exceeds IEEE 472

Environmental

Operating Temperature Range Standard: -40°C to +85°C (-40°F to +185°F); ATEX: -40°C to +80°C (-40°F to +176°F)
Operating Humidity Range 0 to 95%, non-condensing
Enclosure Rating NEMA 4X / IP65 industrial control enclosure; Fiberglass reinforced polyester or stainless steel (optional)
Certifications FM: C/US Class I, Div. 1, Groups C & D; CSA: C/US Class I, Div. 2, Groups C & D; ATEX: II 1 G Ex ia IIB T4 (-40°C to +80°C)

Differential Pressure

400"/1500 psia

400"/4500 psig

Extended DP Range

Upper Range Limit (URL)	400" H ₂ O	400" H ₂ O
Turndown Ratio	400:1	400:1
Min/Max Span	1.0-400 H ₂ O	1.0-400 H ₂ O
Accuracy ¹	0.0525%	0.04%
Stability (%URL/Year)	.0625	.0625
Response Time	100ms	90ms

COMING SOON

Static Pressure

400"/1500 psia

400"/4500 psig

Extended DP Range

Upper Range Limit (URL)	1500 psia	4500 psig
Turndown Ratio	15:1	75:1
Min/Max Span	100-1500 psia	60-4500 psig
Accuracy ¹	0.0550%	0.0375%
Stability (%URL/Year)	0.008	0.016
Response Time	100ms	90ms

COMING SOON

¹Terminal based accuracy-Includes the combined effects for linearity, hysteresis and repeatability

USA

27 Forge Parkway
Franklin, MA 02038
Ph: (713) 272-0404
Fax: (713) 272-2273
orders.process.us@thermofisher.com

India

C/327, TTC Industrial Area
MIDC Pawane
New Mumbai 400 705, India
Ph: +91 22 4157 8800
india@thermofisher.com

China

8/F Bldg C of Global Trade Ctr,
No.36, North 3rd Ring Road,
Dong Cheng District
Beijing, China 100013
Ph: +86 10 84193588
info.eid.china@thermofisher.com

Europe

Ion Path, Road Three,
Winsford, Cheshire CW73GA UK
Ph: +44 1606 548700
Fax: +44 1606 548711
sales.epm.uk@thermofisher.com

Find out more at thermofisher.com/flowmeasurement

ThermoFisher
SCIENTIFIC