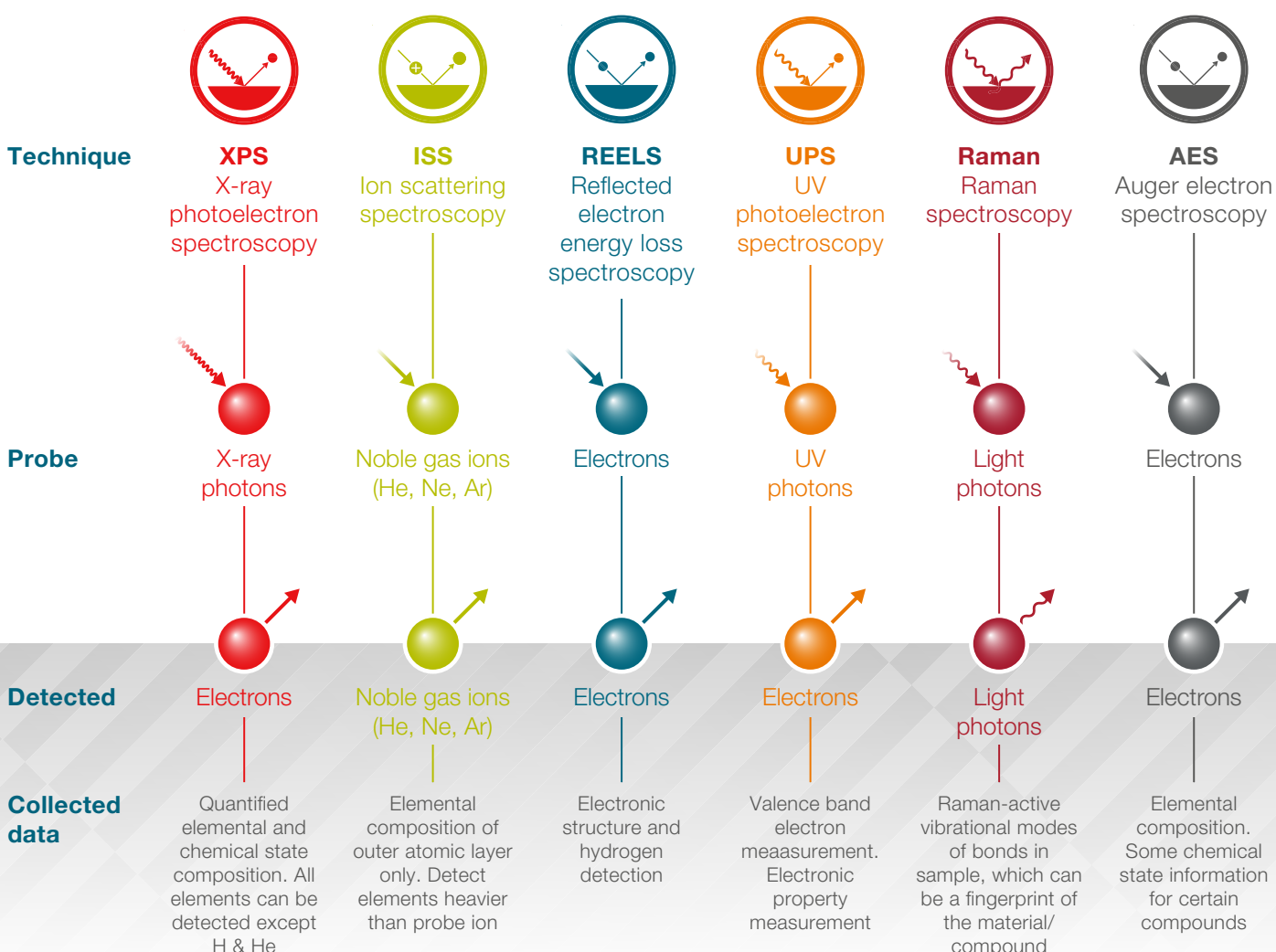


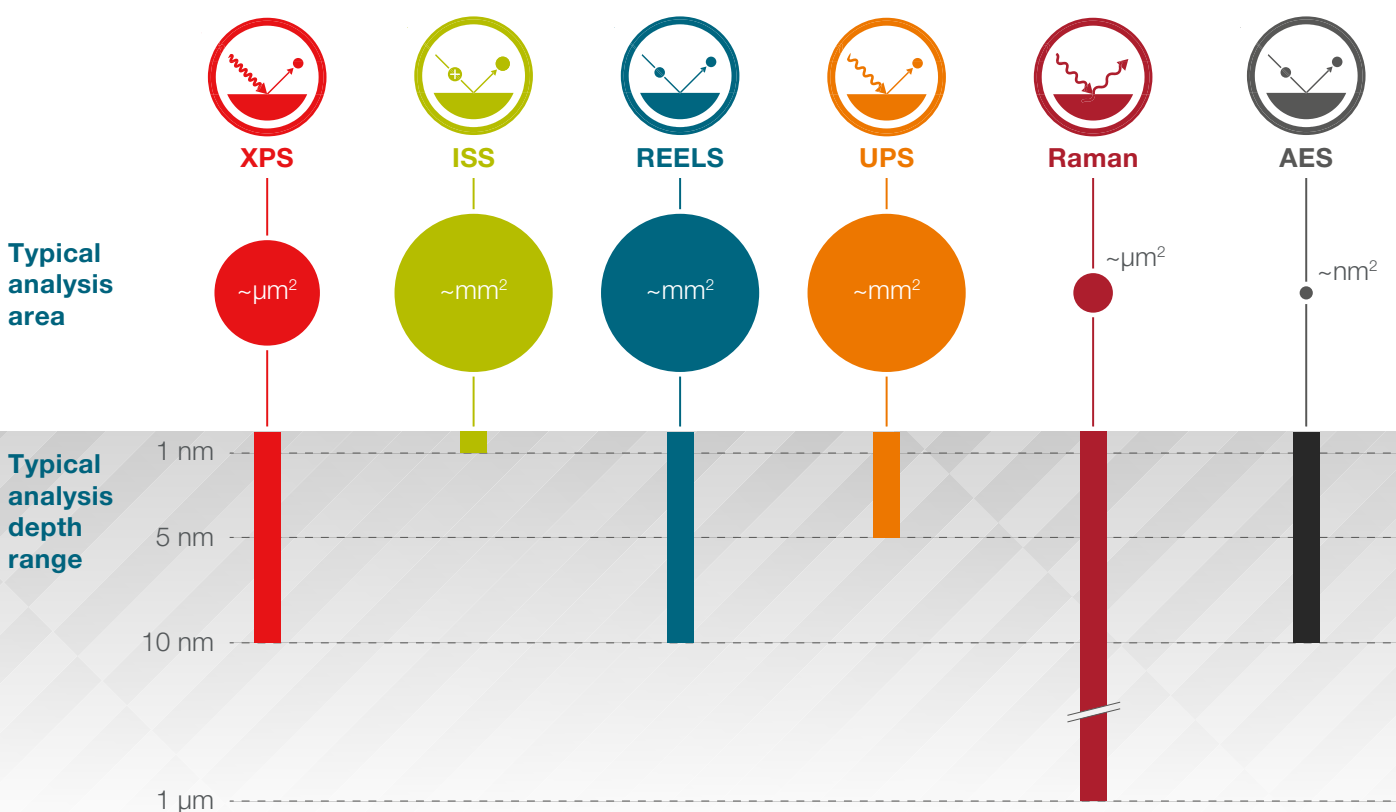
# On the fast track to comprehensive surface analysis

## Single-instrument, multi-technique workflow

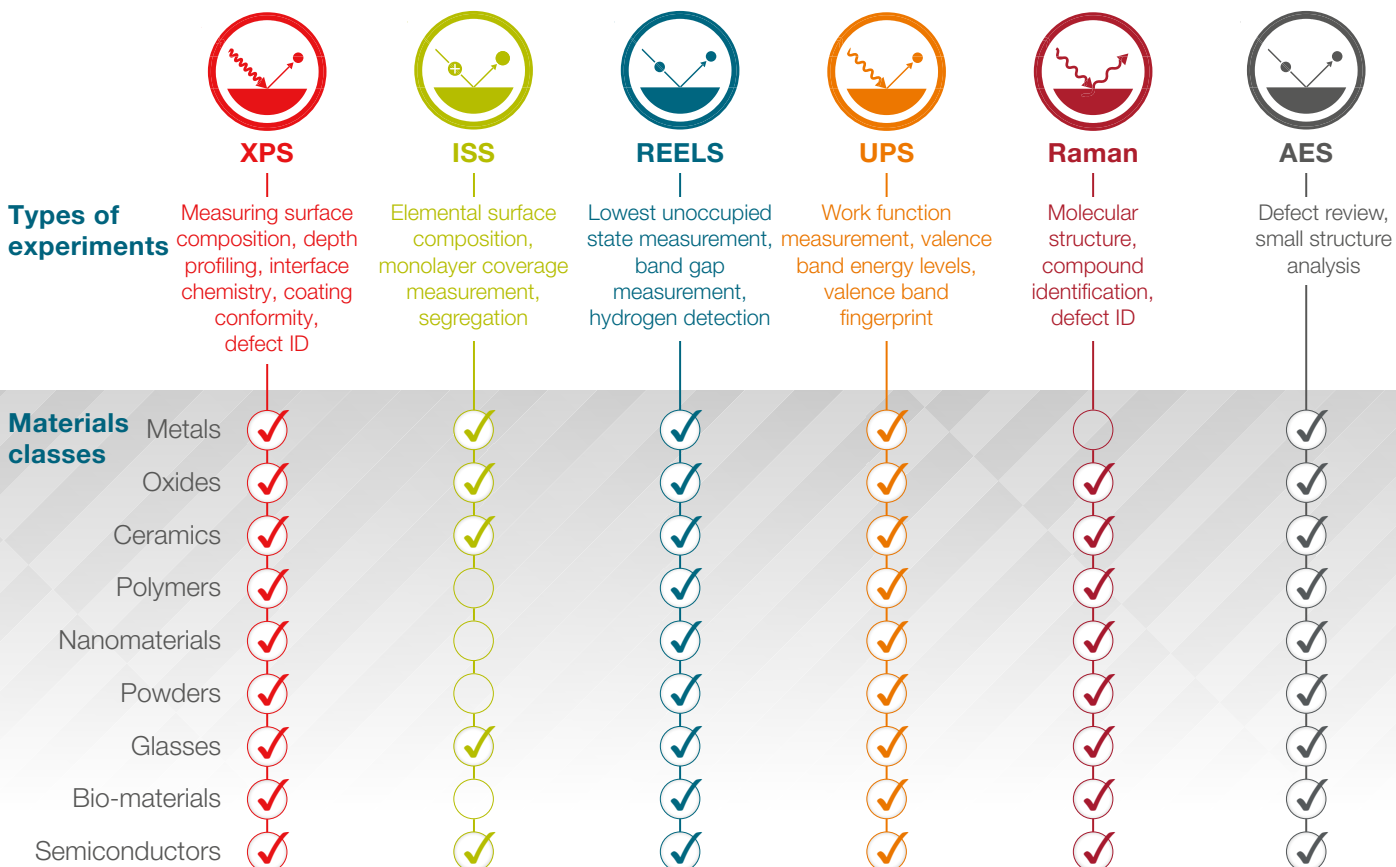
X-ray photoelectron spectroscopy (XPS) is a technique which is commonly used to explore the surface chemistry. Complementing the information received from it with other surface analysis techniques ensures that all key sample data is gathered from the exact same point of the sample in a unified workflow. Here are some of the surface analysis techniques which can enrich and deepen your understanding of the surface.



Depending on the specific surface analysis technique, the area and depth that the data is collected from vary. By understanding this, different techniques can be used to build up a picture of the sample, from the outer atoms to the bulk composition.



An analyst may need to employ several different analysis techniques depending upon the material being investigated and the properties to be understood. Common experiment types and the materials they are typically applied to are shown below.



Find out more at [thermofisher.com/xps](http://thermofisher.com/xps)