

VISION^{lite} Wine Analysis Software

A dedicated software solution for wine and juice analysis

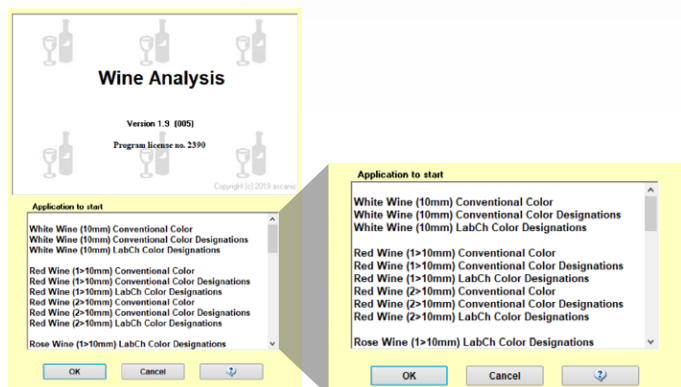
Use your Thermo Scientific™ GENESYS™ 40–180 or Thermo Scientific™ Evolution™ Series Spectrophotometers to perform predefined photometric, colorimetric and enzymatic analytical procedures common in wine and juice analysis.

Thermo Scientific VISION^{lite}™ Wine Analysis Software is a tailored PC software that features a simple user interface, reliable data recording, and error-free evaluation of results presented within comprehensive reports. The system includes an extensive number of predefined methods which can be varied and extended by the user. With full Thermo Fisher Scientific spectrophotometer and accessory support, VISION^{lite} Wine Analysis Software can be utilized with the ideal system for any lab setup.

Extensive list of procedures

VISION^{lite} Wine Analysis Software includes an extensive list of predefined procedures to support wine and juice analysis including but not limited to:

- Enzymatic Test Kits: Ethanol, Sucrose/Glucose/Fructose, Malic Acid, Lactic Acid, Glycerol and more
- Photometric Analysis: Total Phenol Index, Metal Content (Cu, Fe and others), Flavonoids, Anthocyanides, Folin-Ciocalteu and more
- Color: Intensity/Hue, XYZ-Tristimulus, CIE L*a*b* (OIV), CIE L*C*h*, color difference and more



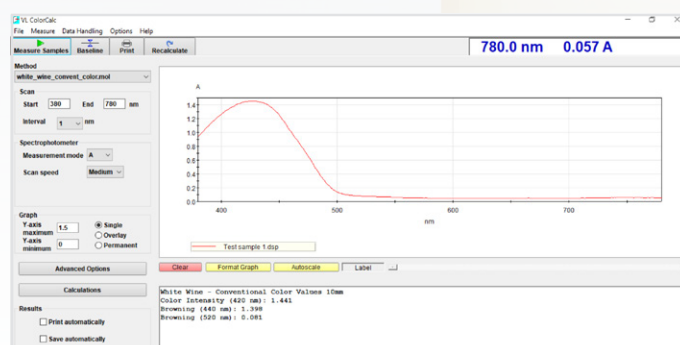
VISION^{lite} Wine Analysis.



GENESYS 50 UV-Vis Spectrophotometer.

Wine and juice color analysis

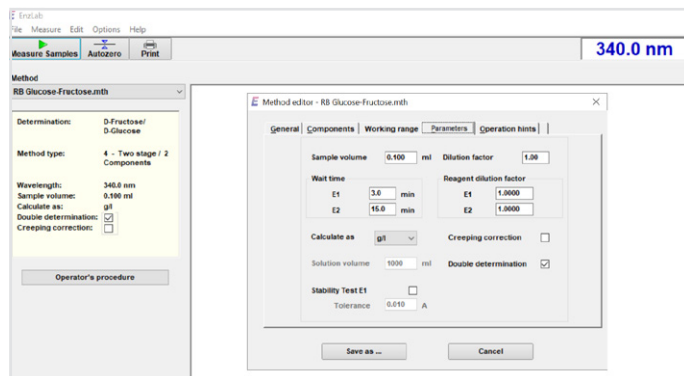
The color software module is used to record a spectrum in the visible range and to calculate the various color parameters. These include the conventional color intensity and hue procedures specific to the wine industry as well as the CIE xyY, L*a*b*, L*C*h* and ΔE procedures common in industry. Measurements of darker wines can be performed in small pathlength cuvettes and the results will be automatically recalculated to a 1 cm pathlength to limit dilutions and simplify calculations.



Wine color analysis.

Compatibility with commercial enzymatic kits

Software modules are included for enzymatic analysis with commercial, ready-to-use reagent kits to calculate the concentration of sugars, fruit acids, alcohol, and various other parameters. The software modules offer advanced features like creeping correction, results recalculation and integrated kit documentation.



Enzymatic test window.

Included analysis methods

Color analysis

- White wine, red wine, and rose wine color classifications
- XYZ-Tristimulus
- CIE L*a*b*
- CIE L*C*h*
- Color difference
- Intensity/hue and other conventional calculations

Enzymatic tests

- Citric Acid
- D-Glucose
- DL-Lactic Acid
- D-Malic Acid
- Glucose-Fructose
- Glycerol
- Gluconic Acid
- Sulfite
- Tartaric Acid
- YANC

Quantitative methods

- Folin-Ciocalteu
- UV-Phenol index
- Puissant-Léon
- Total Phenol index
- Hydroxycinnamic Acids
- Total Flavonoids
- Total Phenolics

Standard VISIONlite tests

- Scanning
- Rate
- Fixed wavelength
- Quantitative

Typical VISIONlite features for general analysis

General-purpose tasks of the wine analysis software are supported by the standard VISIONlite Software platform functionality. It provides techniques like spectrum scanning, measurement of absorbance over time, enzyme activity, and quantitative measurements based on a calibration curve or a user entered analytical factor.

Analytical Report XYZ Lab				
Determination of: L-Lactic Acid/D-Lactic Acid				
Date:	09.07.2003			
Time:	15:48:35			
Operator:	Wili			
Info:	Deno			
Test Kit No:	123789-07/03			
Data source:	Deno			
Result filename:	Tutti-Frutti_0703.rel			
Cell	Sample	E1 [A]	E2 [A]	E3 [A]
1	Blank value	0.056	0.066	0.076
2	Sample0001#1	0.317	0.665	0.813
3	Sample0001#2	0.314	0.659	0.824
4	Sample0002#1	0.298	0.487	0.615
5	Sample0002#2	0.302	0.498	0.635
6	Sample0003#1	0.203	0.504	0.703
7	Sample0003#2	0.207	0.499	0.930
8	Sample0004#1	0.128	0.450	0.923
9	Sample0004#2	0.133	0.453	1.003
Sample name	Sample volume [nl]	Dilution Factor	Component	Result [g/l]
Sample0001#1	0.100	1.00	L-Lactic Acid	0.045
			D-Lactic Acid	0.100
Sample0001#2	0.100	1.00	L-Lactic Acid	0.050
			D-Lactic Acid	0.107
			Mean value L-Lactic Acid	0.047
			Mean value D-Lactic Acid	0.100

Wine analysis enzymatic test report.

Supported instruments

GENESYS 40 and 50	Evolution One
GENESYS 140 and 150	Evolution One Plus
GENESYS 180	NA
BioMate 160	Evolution Pro

Product Information

Description	Part Number
VISIONlite Wine Analysis Software	869-191700
Interface cable for GENESYS 40—180 and BioMate 160	840-312200

Learn more at thermofisher.com/visionlite